


DOOR OPENING/HEADER SCHEDULE								
Number	Remarks	Quantity	Rough Width	Rough Height	Head Height	Header	Bearing (Each Side)	Full (Each Side)
100	A.J./7100/STD 30, BOR-KNOB, WHITE	1	3'-4 3/8"	6'-9 1/8"	6'-9 1/8"	NONE, FRAME W/ 2X MATERIAL	--	--
210	OVERHEAD DOOR	2	14'-0"	12'-0"	12'-0"	2 PLY LP 2650fb 1 3/4"x11 7/8" LVL BOX HEADER W/ (1) SPF 2x6 ABOVE & BELOW, INSULATE BETWEEN PLYS W/ LOOSE 1 7/8" EPS	2	2
210	OVERHEAD DOOR	1	10'-0"	12'-0"	12'-0"	2 PLY LP 2650fb 1 3/4"x9 1/2" LVL BOX HEADER W/ (1) SPF 2x6 ABOVE & BELOW, INSULATE BETWEEN PLYS W/ LOOSE 1 7/8" EPS	1	2



AN EMPLOYEE-OWNED COMPANY

ENERGY PANEL STRUCTURES
102 EAST INDUSTRIAL PARK
GRAETTINGER, IA 51342
PHONE: 712.285-3219
FAX: 712.285-3275
WWW.EPSBUILDINGS.COM

BBL BUILDINGS

LAPPE CEMENT

42'-0" x 128'-0" x 13'-11"

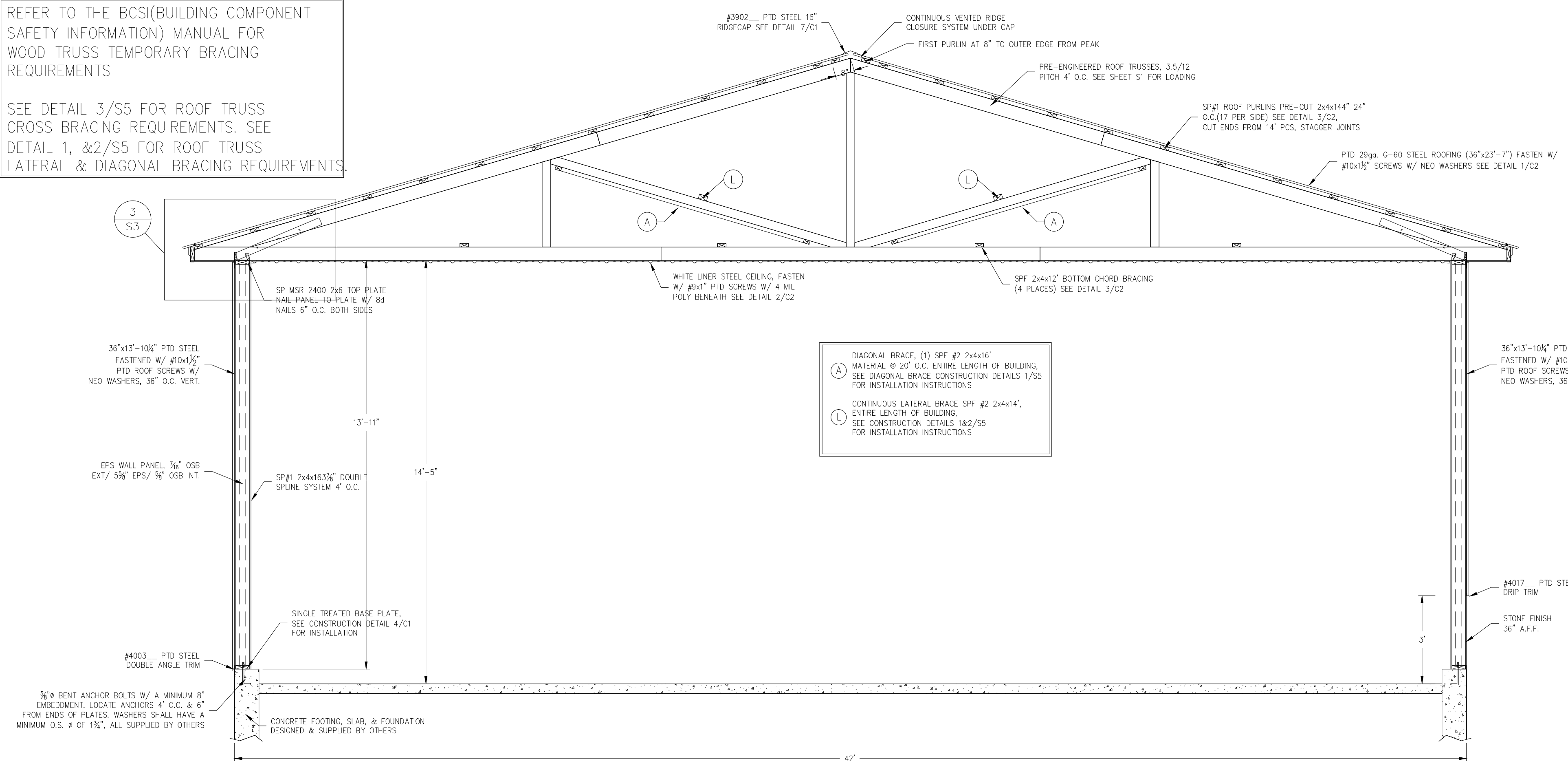
SOLID CORE BUILDING PACKAGE

SCALE: NOTED	DATE: 11/3/11	REV: 0
DRWN BY: R/GW	REVIEWED BY: DMM	REV: 0
DWG NO. 2011/WS/77451		REV: 0

9/EET:
S2

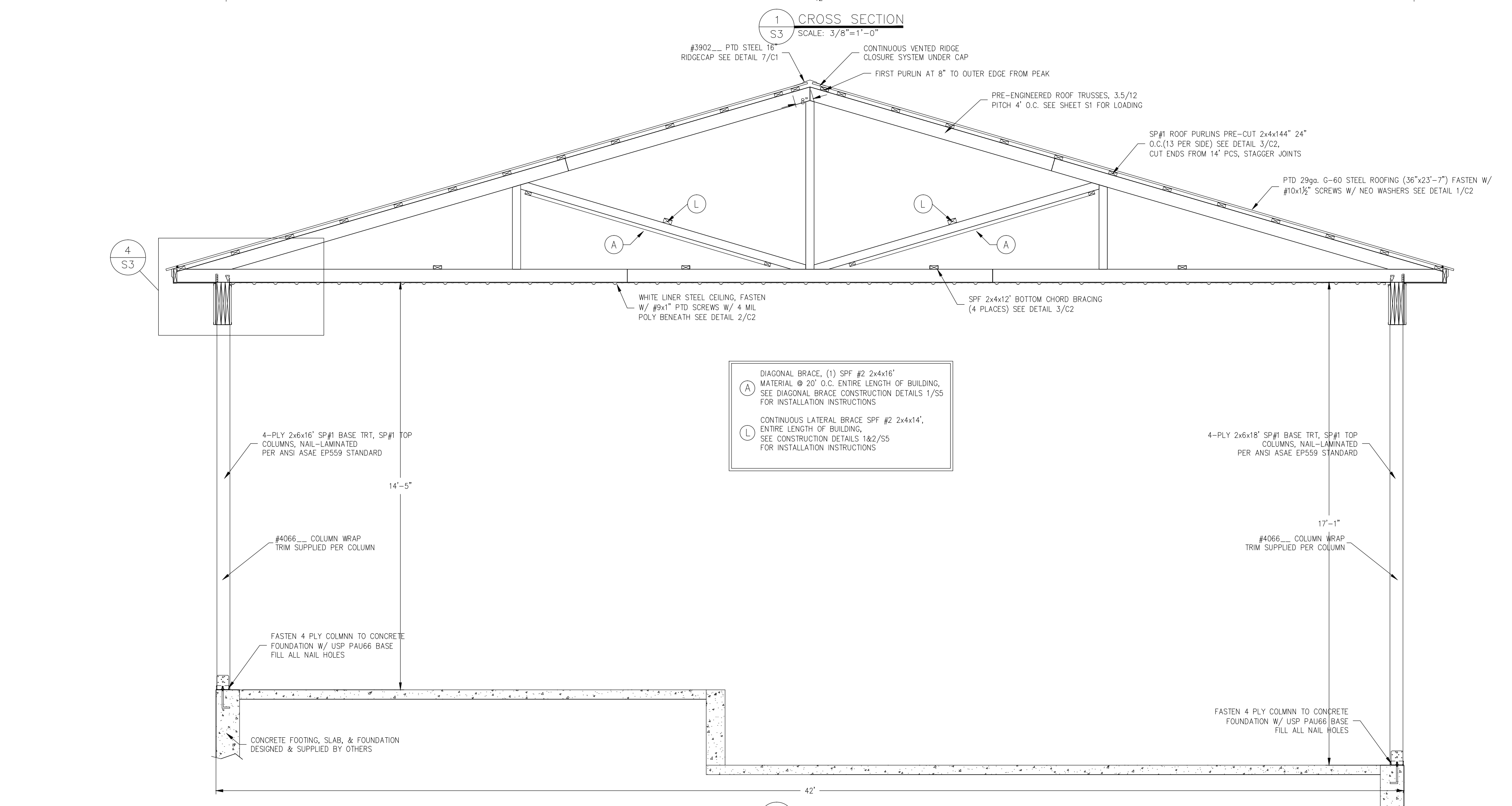
REFER TO THE BCS(BUILDING COMPONENT SAFETY INFORMATION) MANUAL FOR WOOD TRUSS TEMPORARY BRACING REQUIREMENTS

SEE DETAIL 3/S5 FOR ROOF TRUSS CROSS BRACING REQUIREMENTS. SEE DETAIL 1, &2/S5 FOR ROOF TRUSS LATERAL & DIAGONAL BRACING REQUIREMENTS



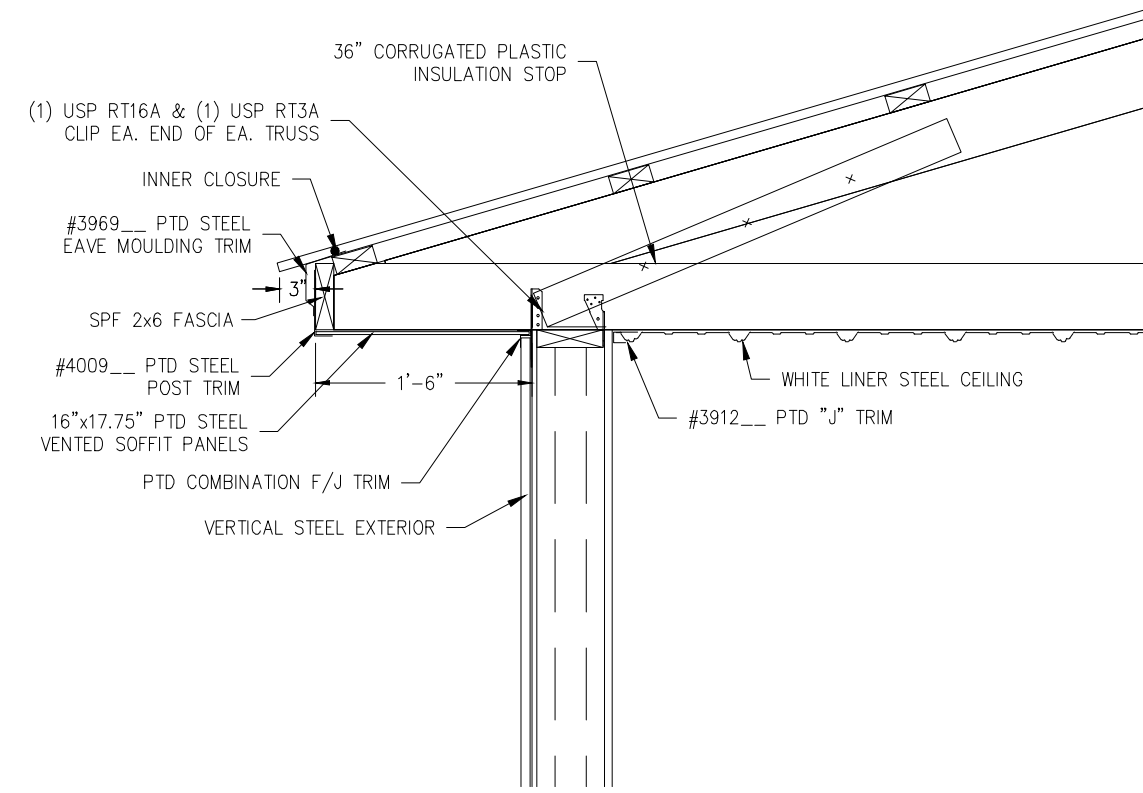
DIAGONAL BRACE, (1) SPF #2 2x4x16'
A MATERIAL @ 20' O.C. ENTIRE LENGTH OF BUILDING, SEE DIAGONAL BRACE CONSTRUCTION DETAILS 1/S5 FOR INSTALLATION INSTRUCTIONS
L CONTINUOUS LATERAL BRACE SPF #2 2x4x14', ENTIRE LENGTH OF BUILDING, SEE CONSTRUCTION DETAILS 1&2/S5 FOR INSTALLATION INSTRUCTIONS

1 CROSS SECTION
S3 SCALE: 3/8"=1'-0"

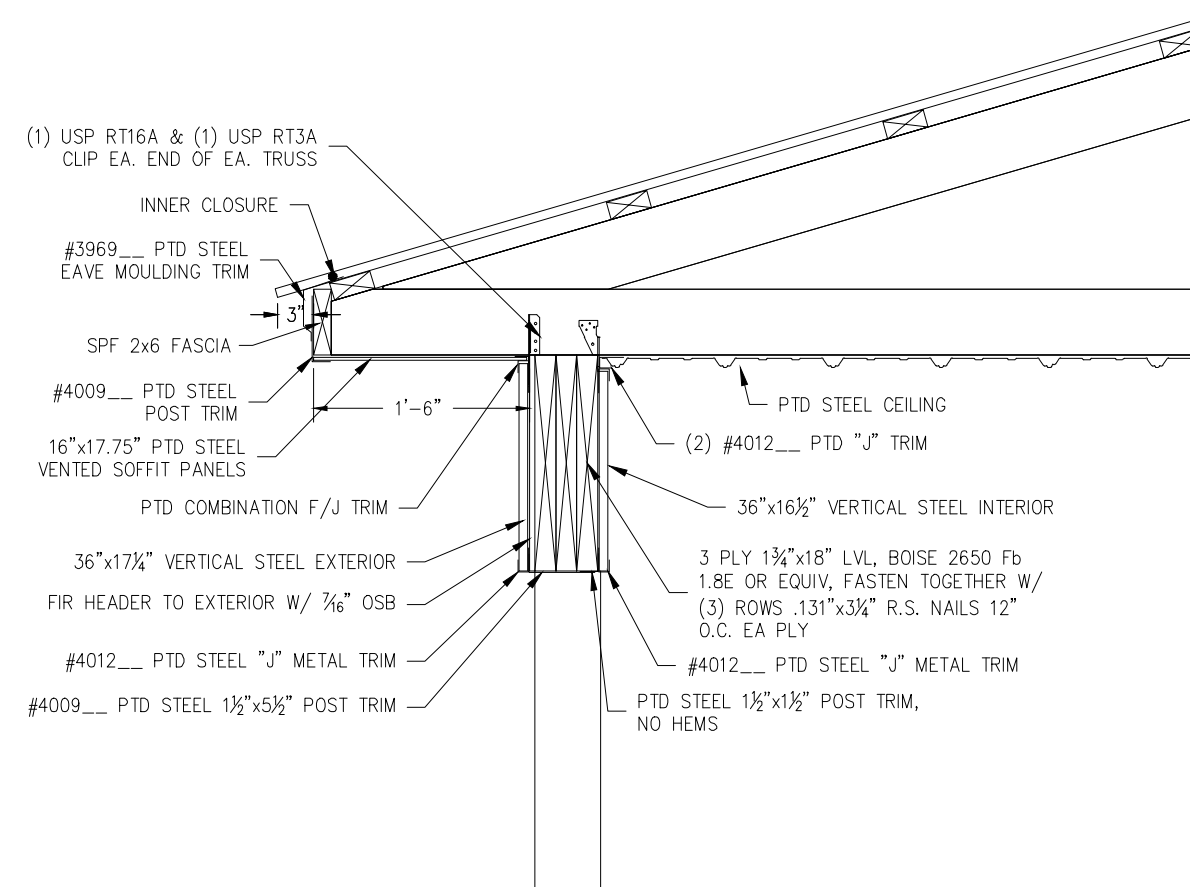


DIAGONAL BRACE, (1) SPF #2 2x4x16'
A MATERIAL @ 20' O.C. ENTIRE LENGTH OF BUILDING, SEE DIAGONAL BRACE CONSTRUCTION DETAILS 1/S5 FOR INSTALLATION INSTRUCTIONS
L CONTINUOUS LATERAL BRACE SPF #2 2x4x14', ENTIRE LENGTH OF BUILDING, SEE CONSTRUCTION DETAILS 1&2/S5 FOR INSTALLATION INSTRUCTIONS

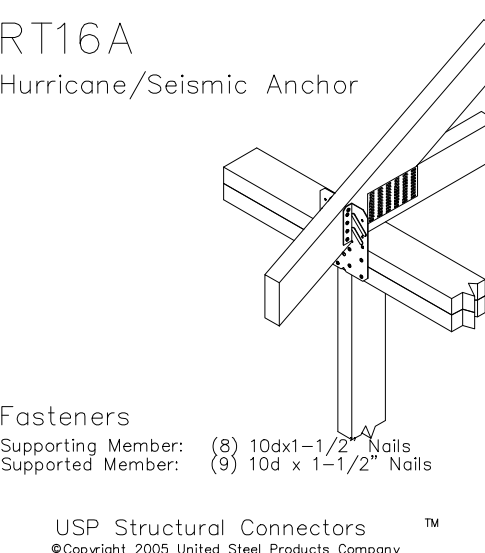
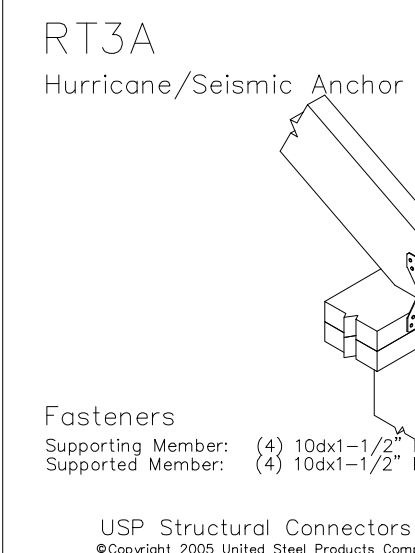
2 CROSS SECTION
S3 SCALE: 3/8"=1'-0"



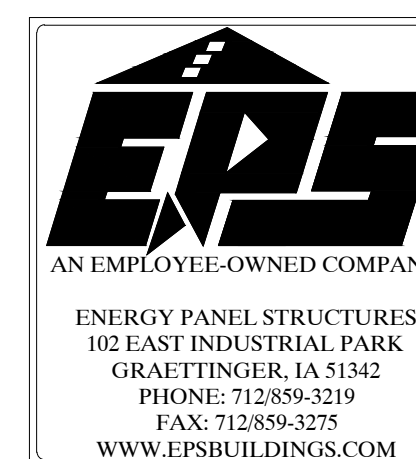
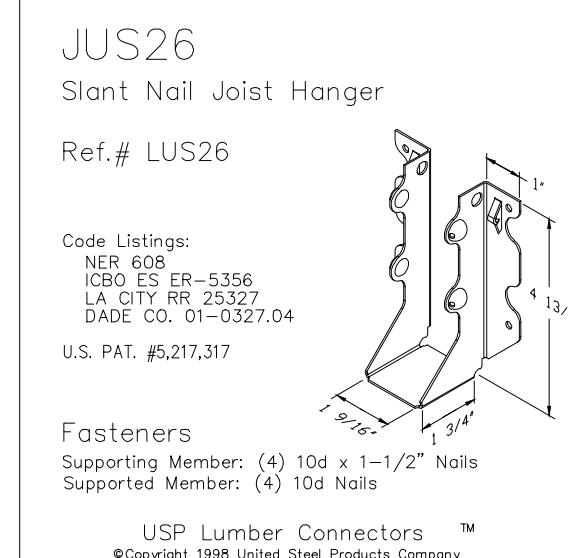
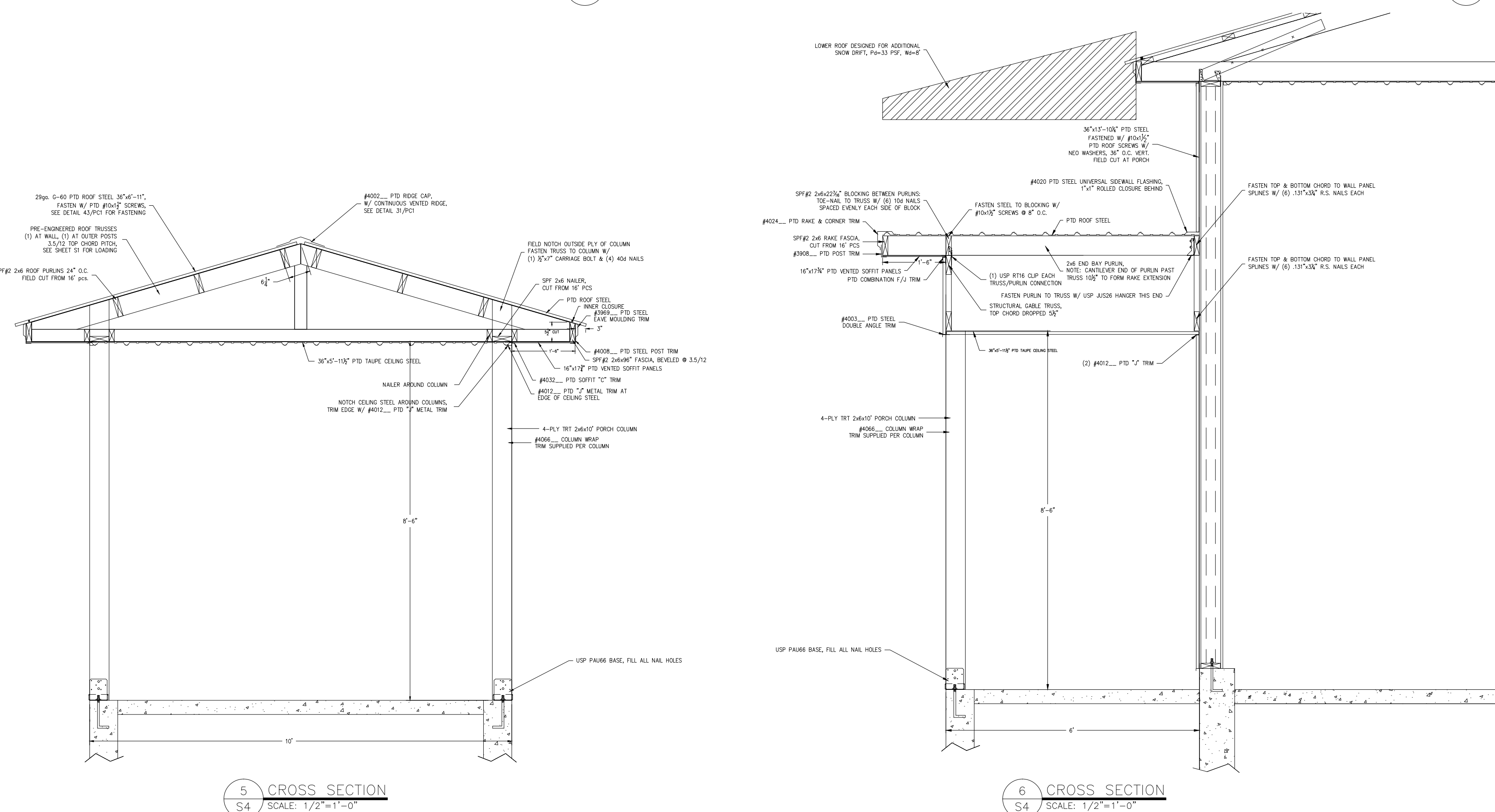
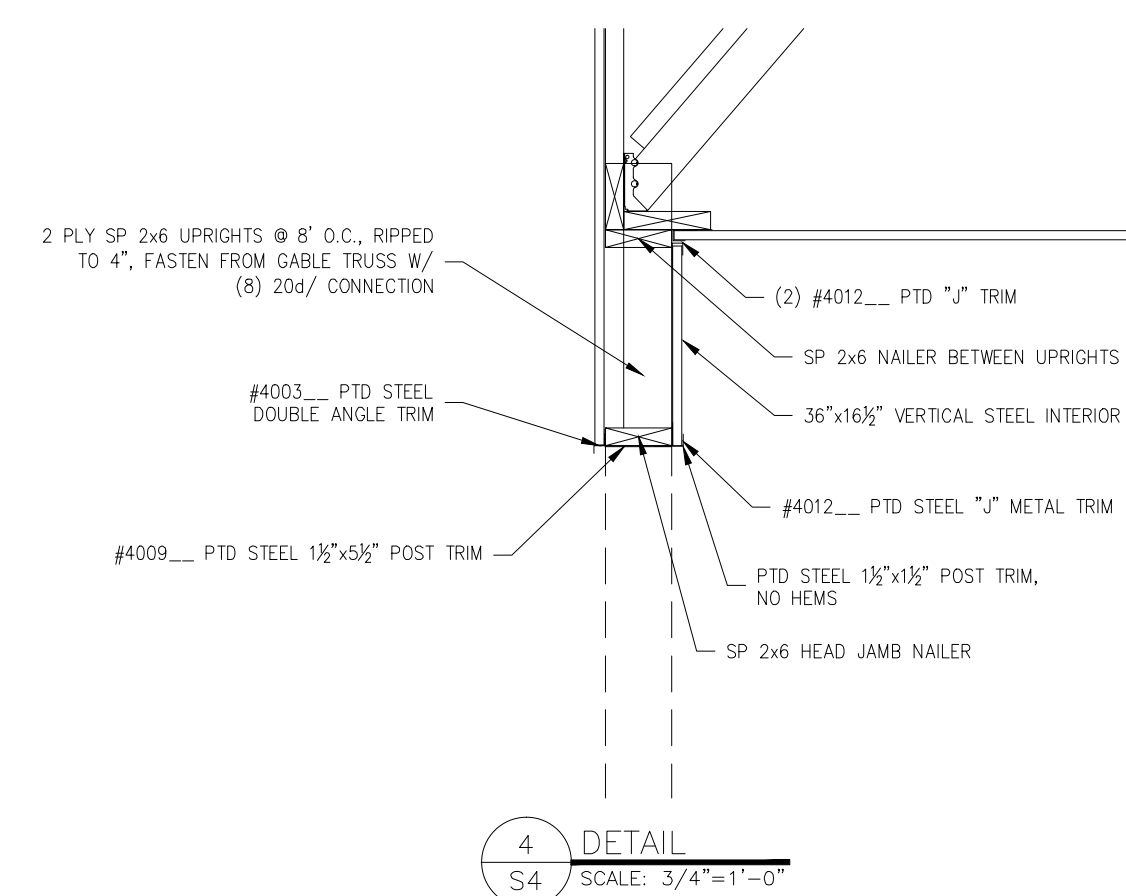
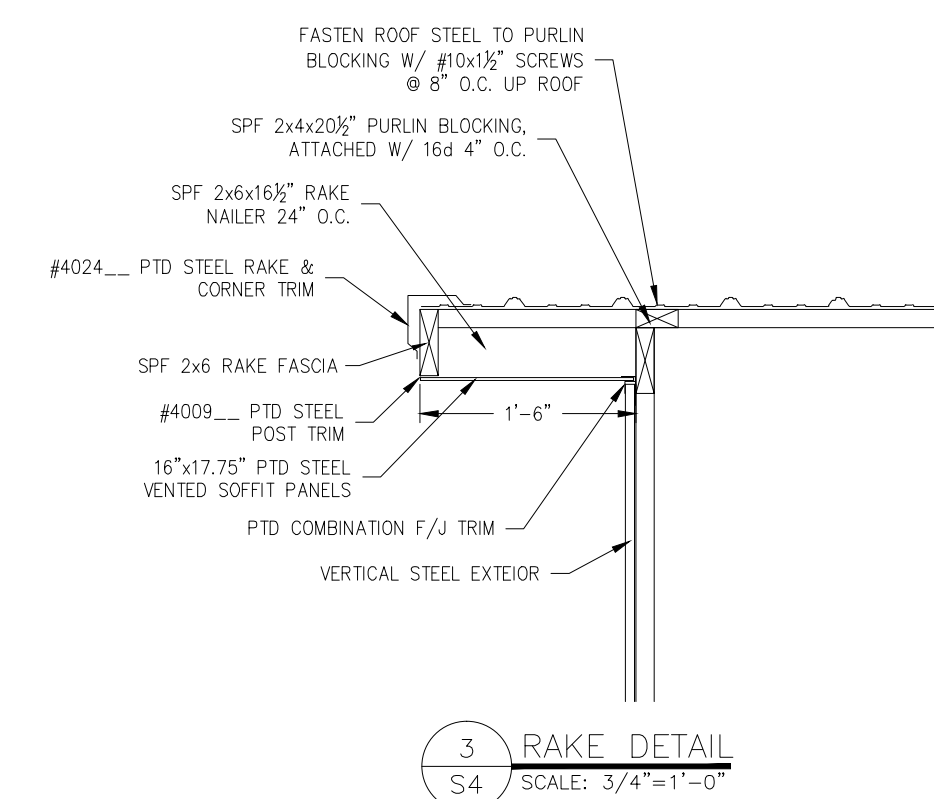
3 EAVE DETAIL
S3 SCALE: 3/4"=1'-0"



4 EAVE DETAIL
S3 SCALE: 3/4"=1'-0"

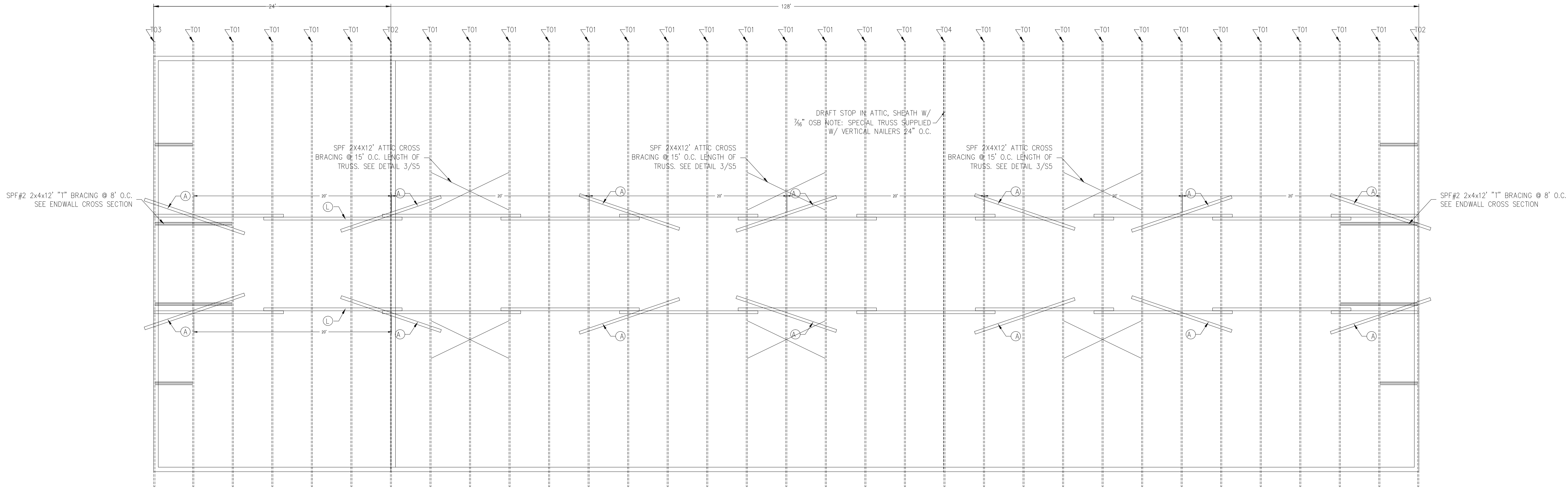


BBL BUILDINGS			
LAPPE CEMENT			
42'-0"x128'-0"x13'-11"			
SOLID CORE BUILDING PACKAGE			
SCALE: NOTED	DATE: 11/3/11	REV. 0	SHEET: S3
DRAWN BY: RGW	REVIEWED BY: DMM	REV. 0	
DWG NO. 2011/WS/77451		REV. 0	

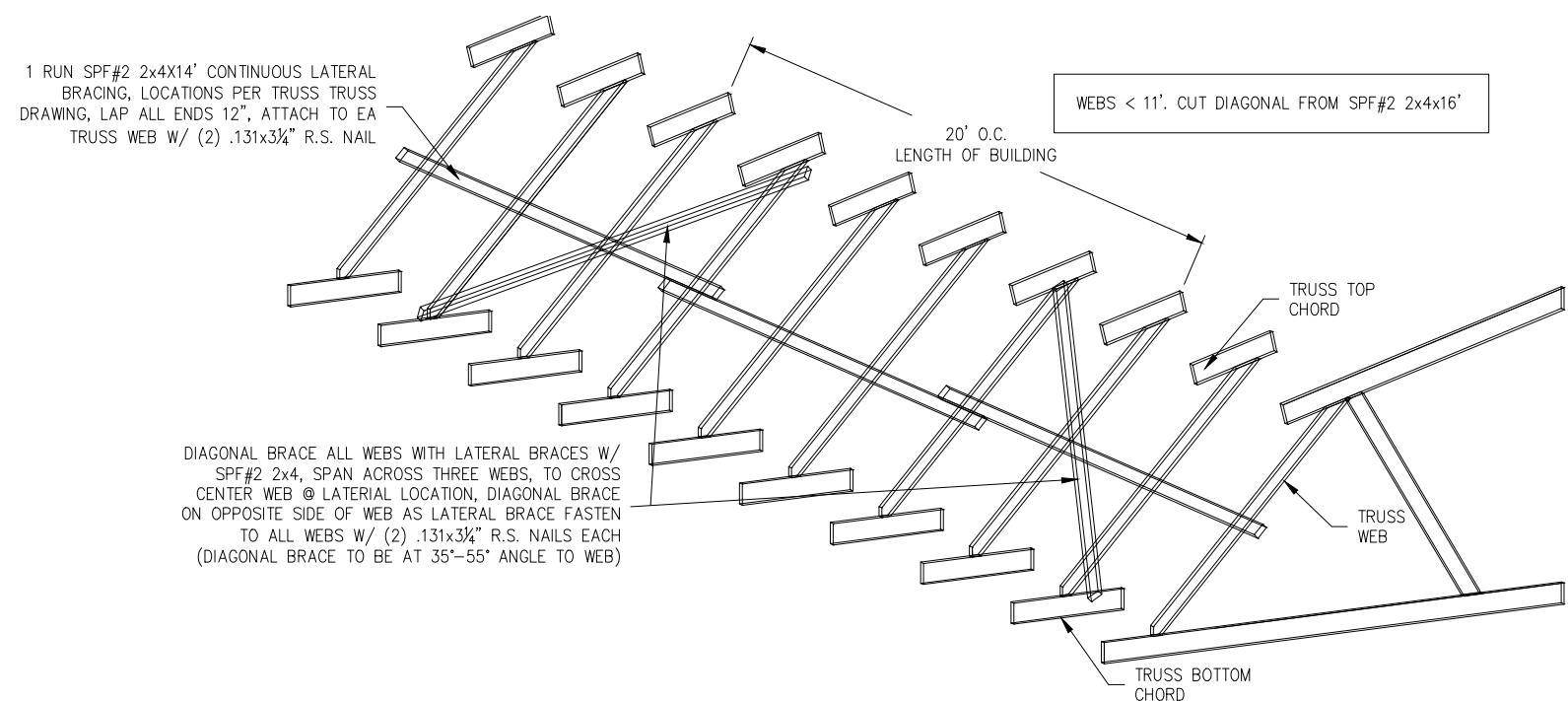


BBL BUILDINGS
LAPPE CEMENT 42'-0"x128'-0"x13'-11" SOLID CORE BUILDING PACKAGE

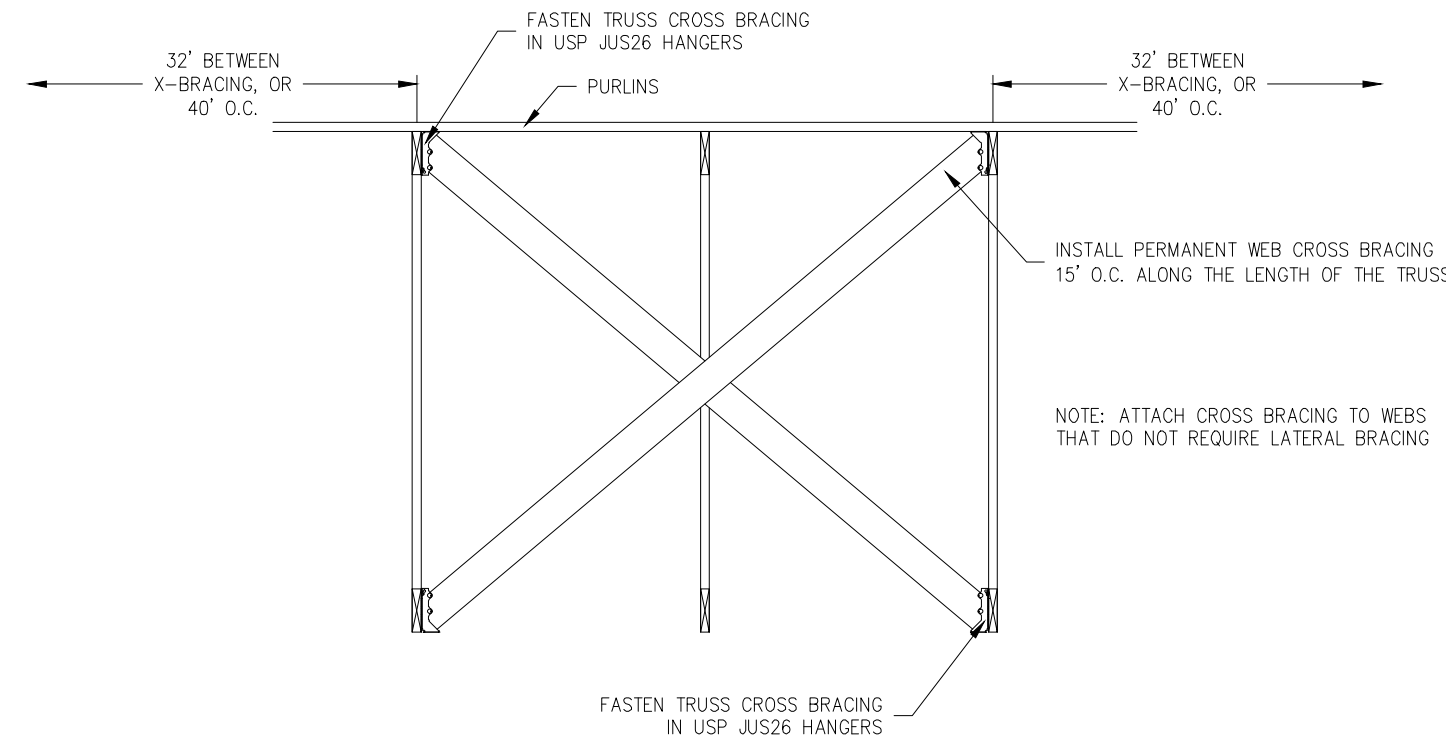
SCALE: NOTED	DATE: 11/3/11	REV. 0	SHEET: S4
DRWN BY: RGW	REVIEWED BY: DMM	REV. 0	
DWG NO. 2011/WS/77451		REV. 0	



2 ROOF TRUSS LAYOUT
S5 SCALE: 3/16"=1'-0"



1 4' O.C. TRUSSES (1) RUN LATERAL BRACE, WEB < 11'
S5 SCALE: NONE



3 ROOF TRUSS "X" BRACING
S5 SCALE: NONE

JUS26
Slant Nail Joist Hanger
Ref.# LUS26

Code Listings:
NER 608
ICBO ES CR-5356
LA CITY BR 25327
DADE CO. 01-0327.04
U.S. PAT. #5,217,317

Fasteners
Supporting Member: (4) 10d x 1-1/2" Nails
Supported Member: (4) 10d Nails

USP Lumber Connectors
©Copyright 1998 United Steel Products Company

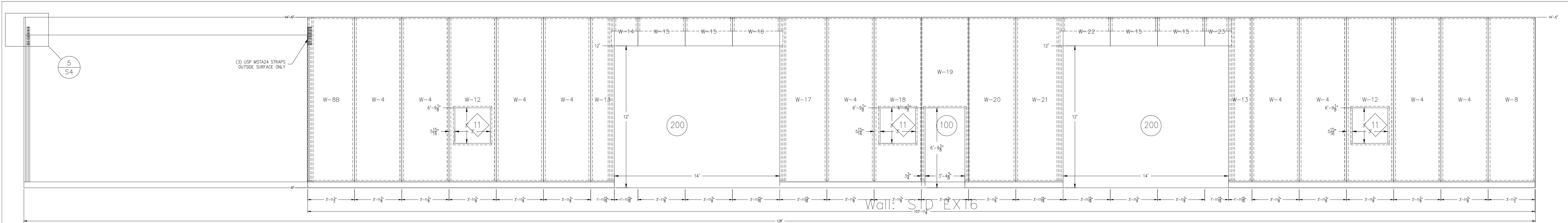
EPS
AN EMPLOYEE-OWNED COMPANY

ENERGY PANEL STRUCTURES
102 EAST INDUSTRIAL PARK
GRAFTINGHER, IA 51542
PHONE: 712/859-3219
FAX: 712/859-3275
WWW.EPSBUILDINGS.COM

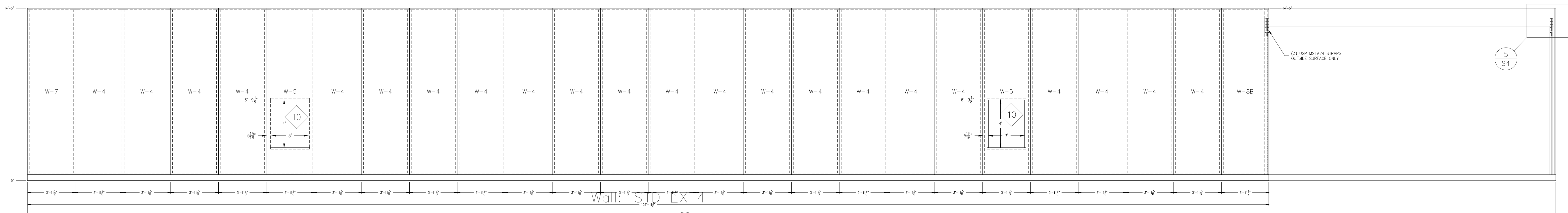
BBL BUILDINGS

LAPPE CEMENT
42'-0"x128'-0"x13'-11"
SOLID CORE BUILDING PACKAGE

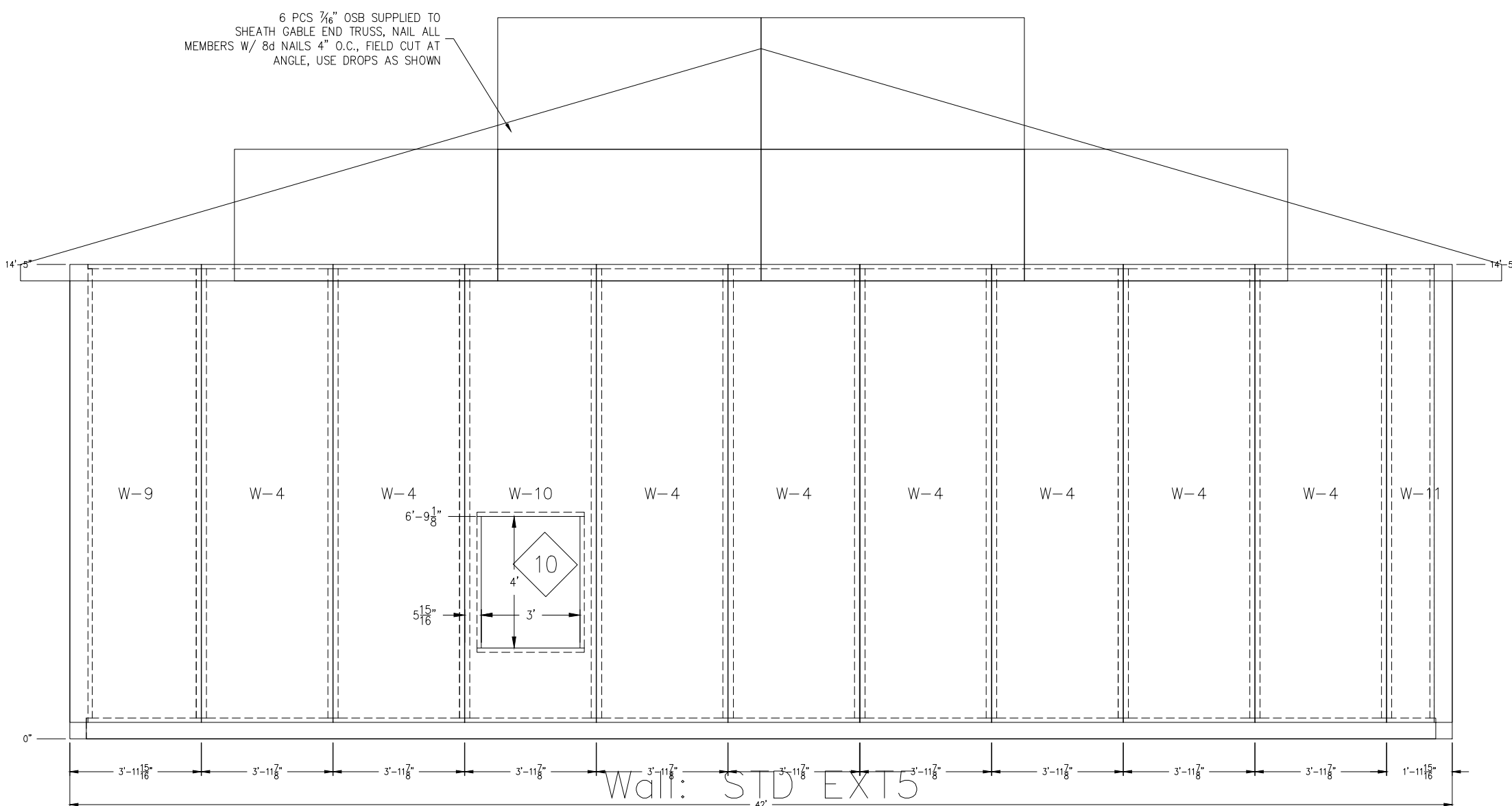
SCALE: NOTED	DATE: 11/3/11	REV. 0	SHEET: S5
DRAWN BY: RGW	REVIEWED BY: DMM	REV. 0	
DWG NO. 2011/WS/77451		REV. 0	



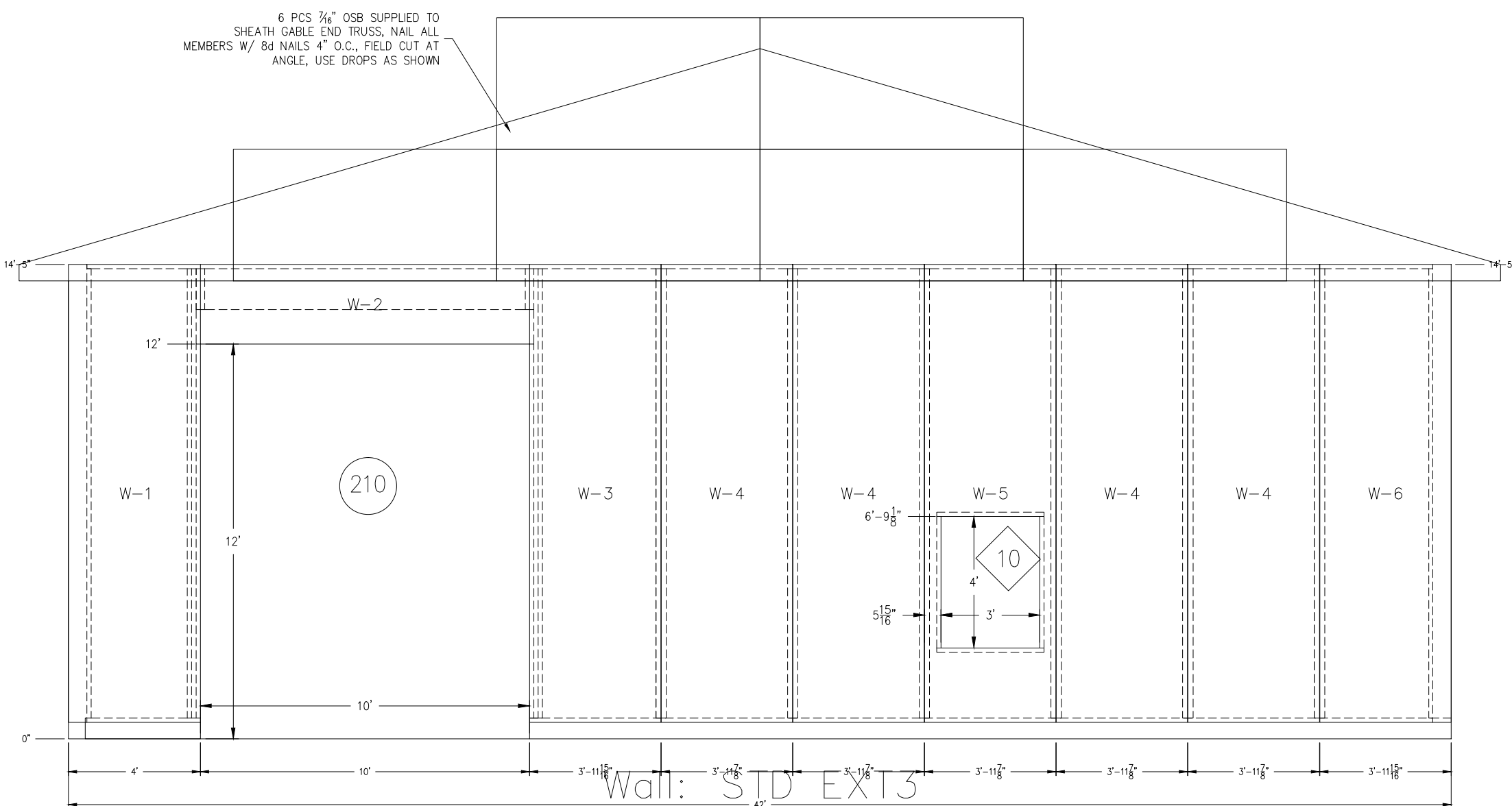
1 SIDEWALL ELEVATION
S6 SCALE: 1/4"=1'-0"



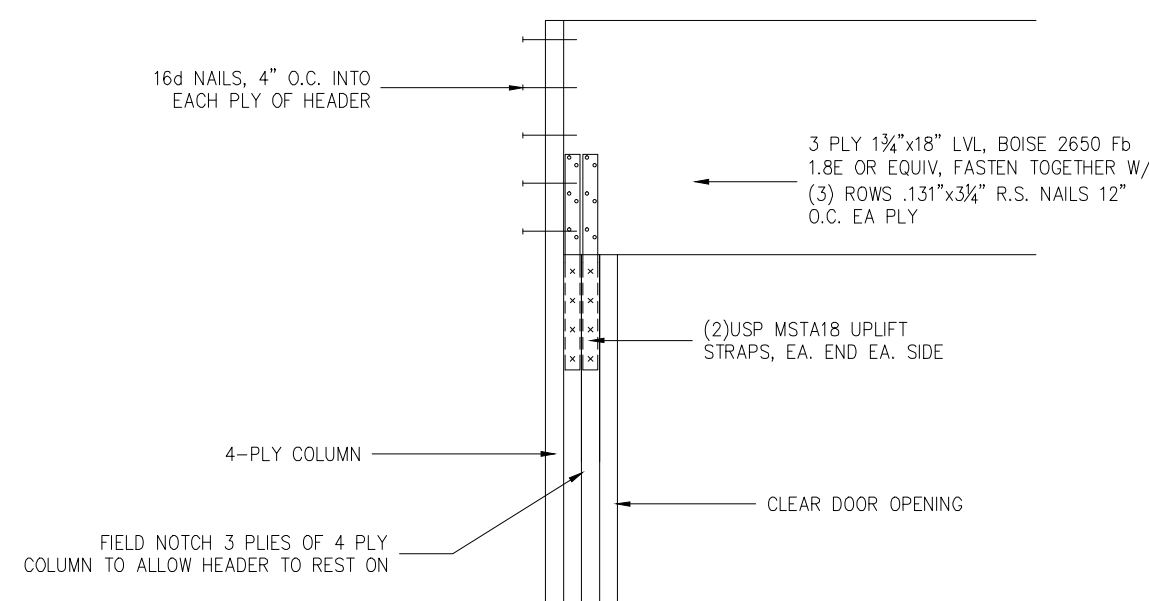
3 SIDEWALL ELEVATION
S6 SCALE: 1/4"=1'-0"



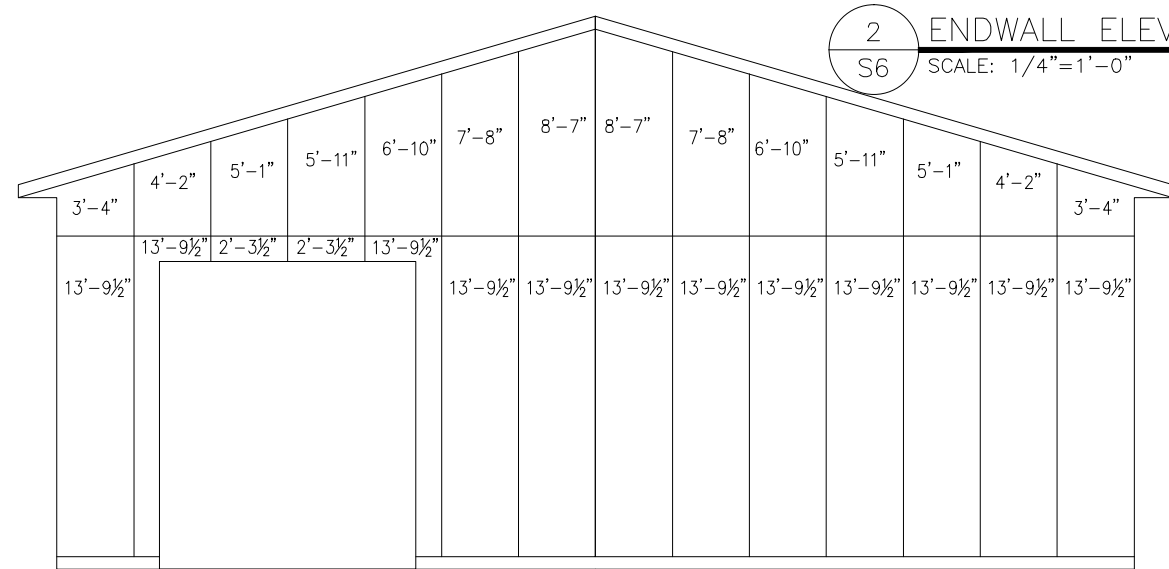
2 ENDWALL ELEVATION
S6 SCALE: 1/4"=1'-0"



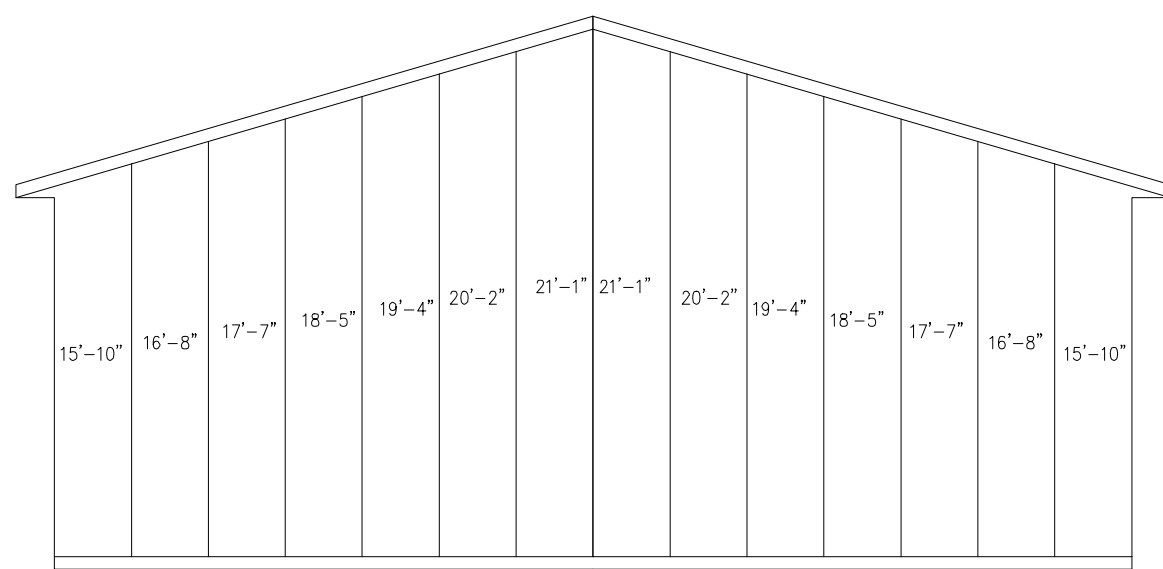
3 ENDWALL ELEVATION
S6 SCALE: 1/4"=1'-0"



5 ENDWALL ELEVATION
S6 SCALE: 1/4"=1'-0"



5 SIDEWALL STEEL LAYOUT
S6 SCALE: 1/8"=1'-0"



6 ENDWALL STEEL LAYOUT
S6 SCALE: 1/8"=1'-0"

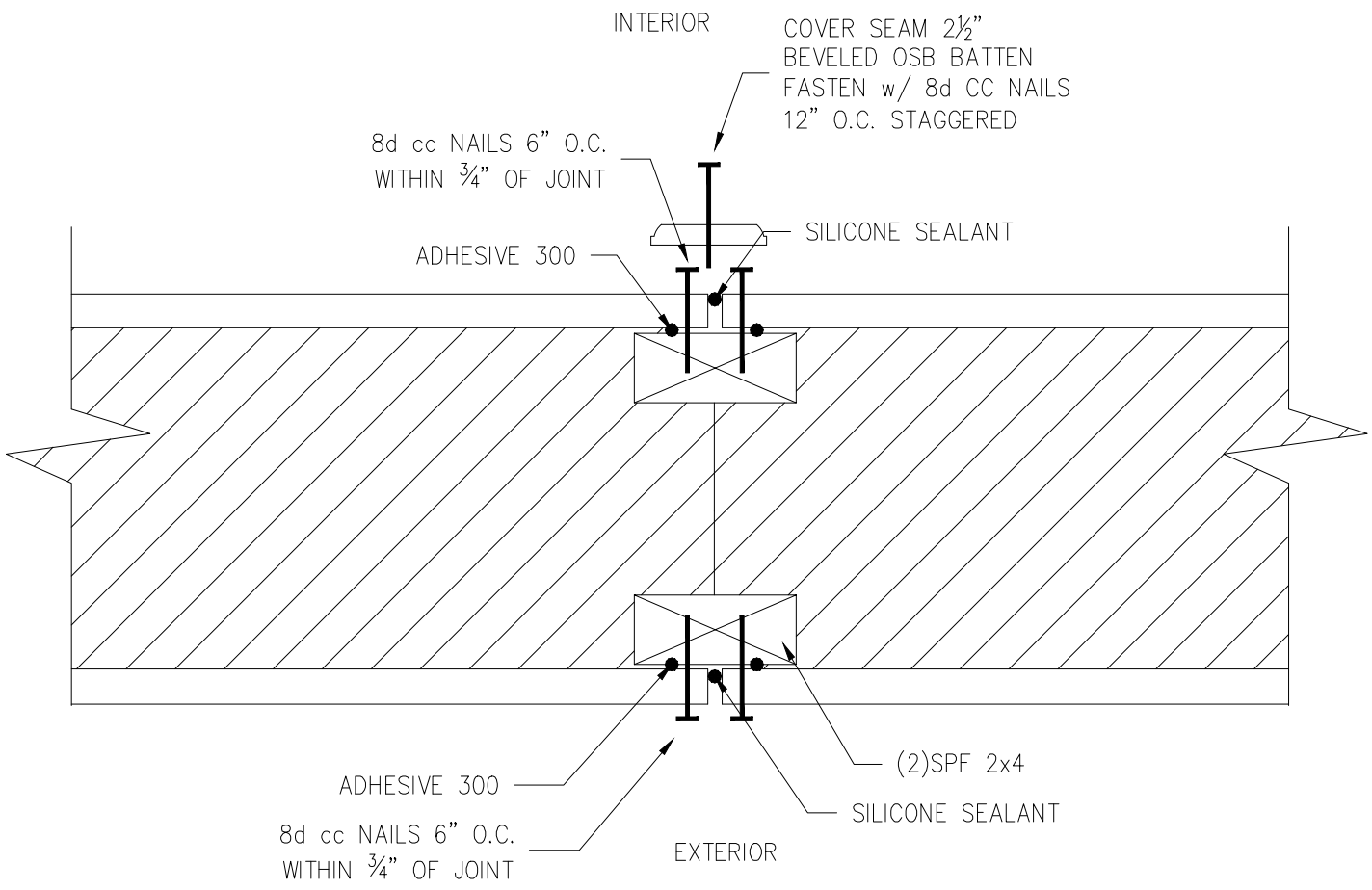


ENERGY PANEL STRUCTURES
102 EAST INDUSTRIAL PARK
GRAETTINGER, IA 51542
PHONE: 712/859-3219
FAX: 712/859-3275
WWW.EPSBUILDINGS.COM

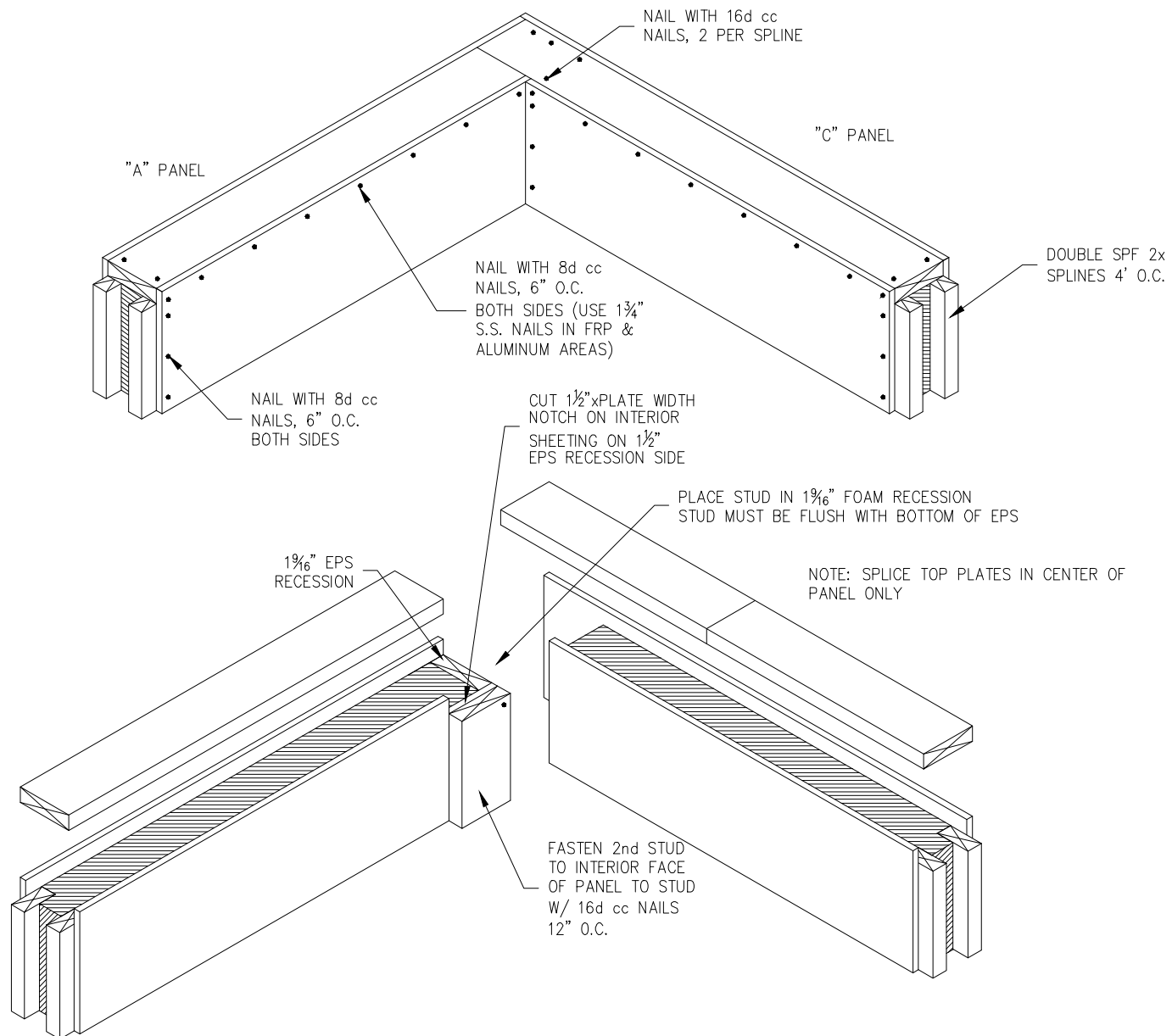
BBL BUILDINGS
LAPPE CEMENT
42'-0"x128'-0"x13'-11"
SOLID CORE BUILDING PACKAGE

SCALE: NOTED DATE: 11/3/11
DRAWN BY: RGW REVENED BY: DMM
DWG NO. 2011/WS/77451

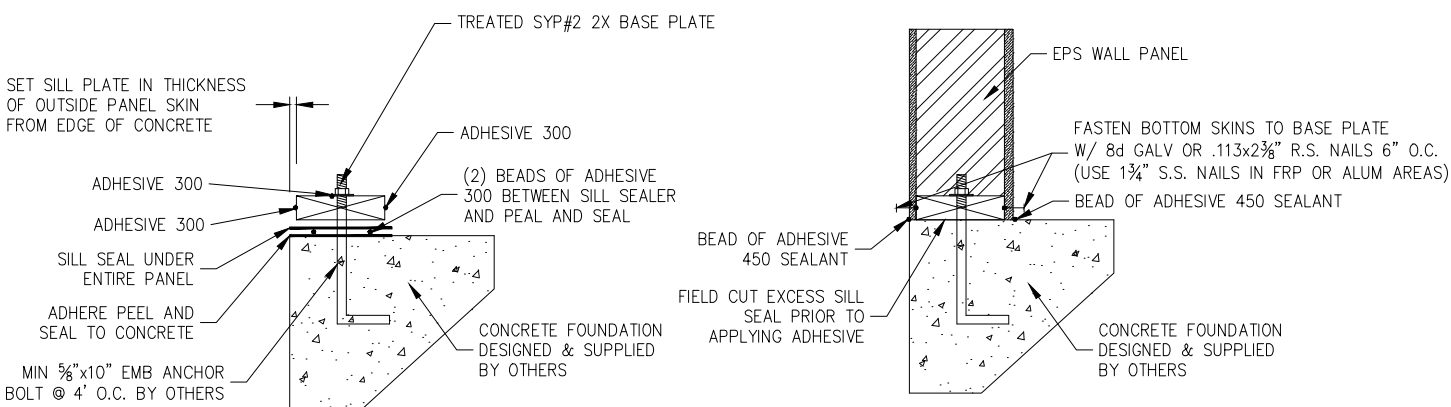
SHEET:
S6



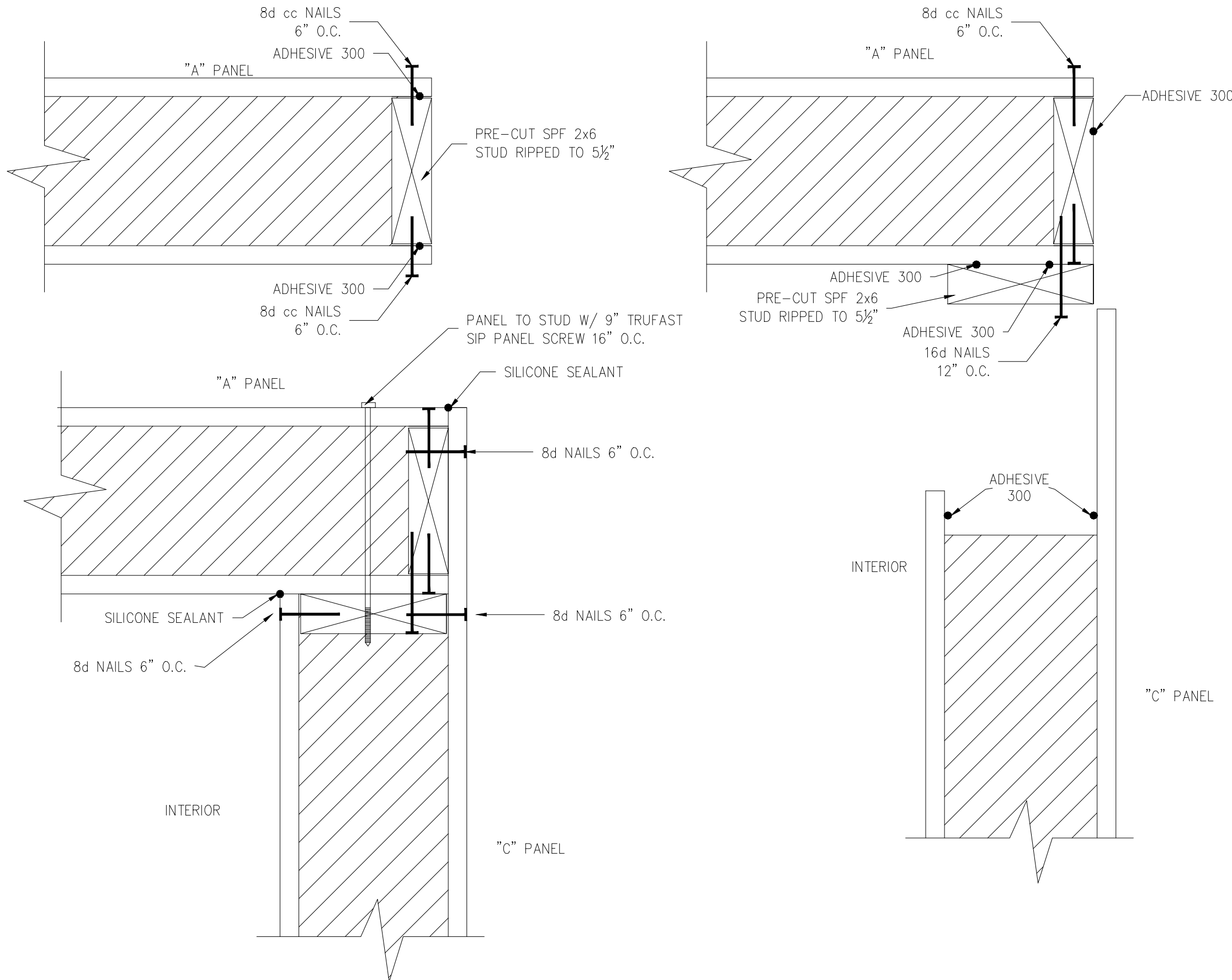
1 - PANEL/PANEL CONNECTION



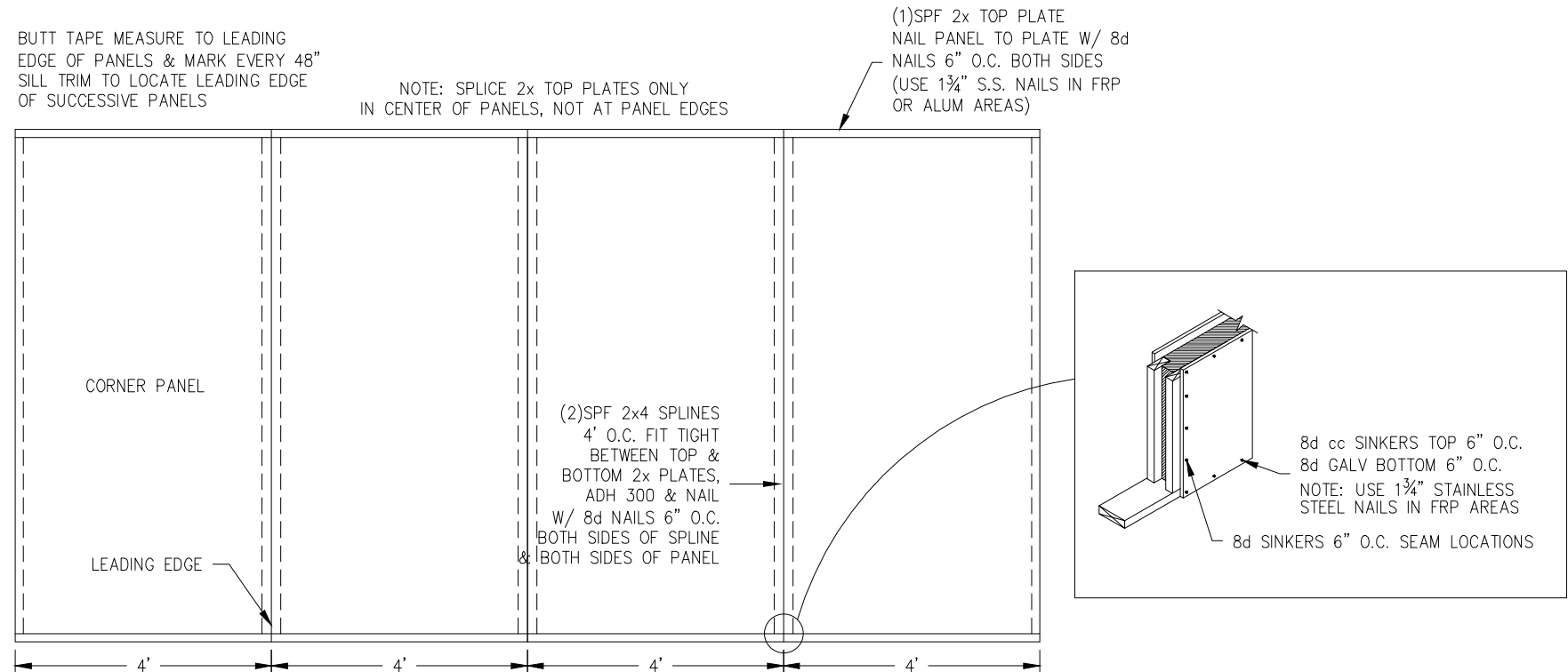
3 - CORNER/TOP PLATE CONNECTION



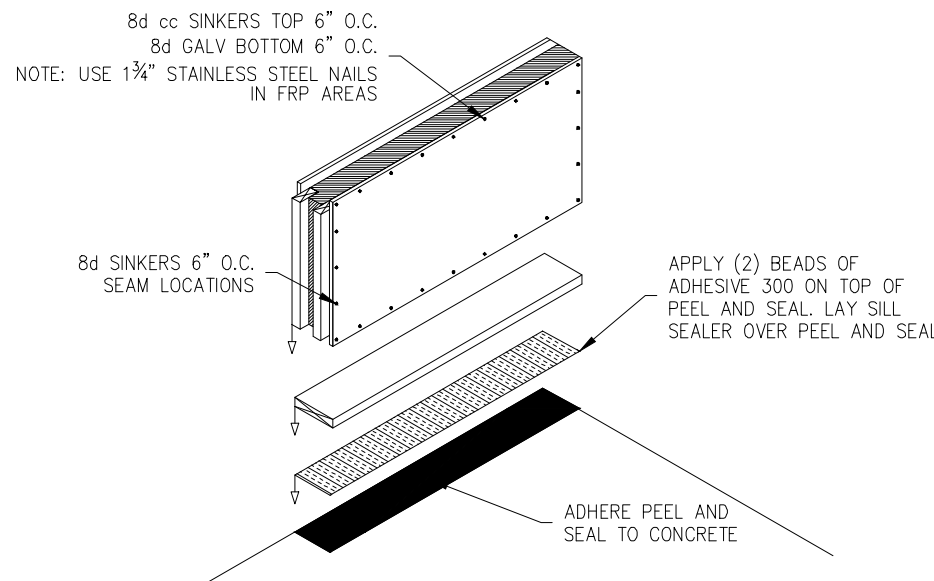
4 - BASE DETAIL



2 - PANEL CORNER CONNECTION

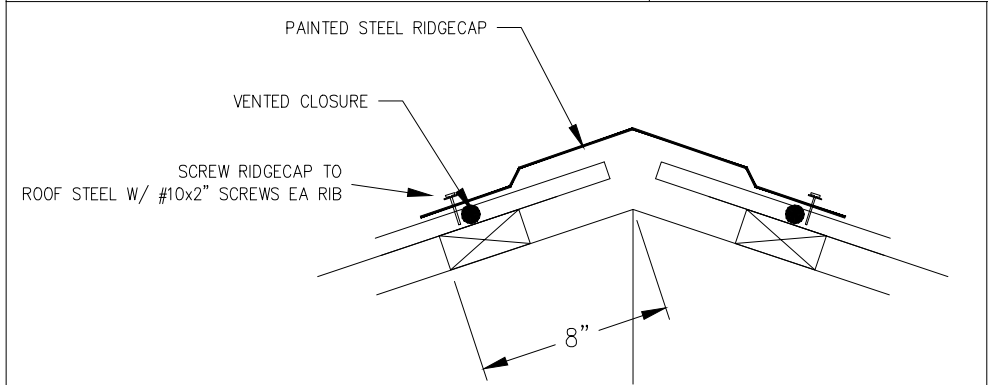


5 - PANEL CONNECTIONS

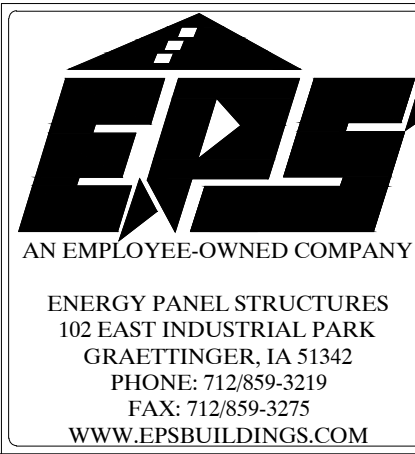


6 - BASE SILL DETAIL

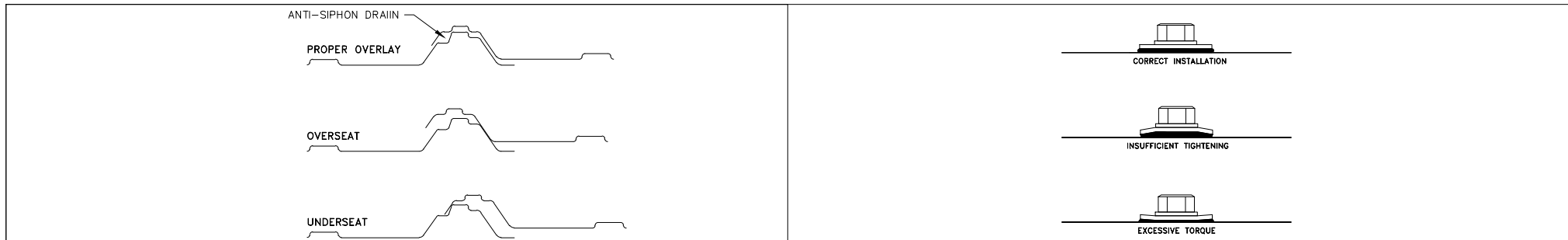
SOLID CORE BUILDING FASTENING SCHEDULE		
COMPONENT	TYPE OF FASTENER	FREQUENCY
SILL PLATE/FOUNDATION	MIN. 5/8" dia ANCHOR BOLTS SILL SEAL	48" O.C. (by others) CONTINUOUS
TOP PLATE/STUDS	16d cc SINKERS	2' STUD
PANELS/SILL PLATE	ADHESIVE 350 ALL SKINS 8d GALV (1 3/4" S.S. IN FRP OR ALUM SKINS)	1 RUN/SKIN 6" O.C., INT & EXT. PANEL CORNERS, INT & EXT.
PANELS/STUDS	8d cc SINKERS ADHESIVE 350 ALL SKINS	6" O.C., INT & EXT. 1 RUN/SKIN
PANELS/TOP PLATE	ADHESIVE 350 ALL SKINS 8d cc SINKERS (1 3/4" S.S. IN FRP OR ALUM SKINS)	1 RUN/SKIN 6" O.C., INT & EXT. PANEL CORNERS, INT & EXT.
ENDWALL PLATE/TOP PLATE	16d cc SINKERS	6" O.C.
CABLE END TRUSS/ENDWALL PLATE	16d cc SINKERS	4" O.C.
REGULAR TRUSS/TOP PLATE	SEE EAVE DETAIL	SEE EAVE DETAIL
ROOF PURLINS/TRUSSES	16d R.S.	2 PER CONNECTION
FASCIA BOARD/TRUSSES	16d cc SINKERS	2 PER TRUSS
SOFFIT BOARD/TRUSSES & BLOCK	8d cc SINKERS	2 PER TRUSS
POST TRIM/FASCIA BOARD	#10x1-1/2" ROOF SCREWS PAINTED	18" O.C.
ANGLE TRIM/BOTTOM PURLIN	8d cc SINKERS	18" O.C.
ROOF STEEL/ROOF PURLINS	#10x1-1/2" ROOF SCREWS PAINTED	(1) ea FLAT BESIDE RIB IN FLAT INTERMEDIATE (1) ea SIDE OF RIB IN FLAT RIDGE & EAVE
ROOF STEEL SIDE SEAMS	#2x5/8" ROOF SCREWS PAINTED	SEE CROSS SECTION
DOUBLE ANGLE/CABLE TRUSS	8d cc SINKERS	18" O.C.
PLYWOOD/CABLE END TRUSS	8d cc SINKERS	4" O.C. ALL MEMBERS
CABLE END STEEL/CABLE TRUSS	#10x1-1/2" ROOF SCREWS PAINTED	ea FLAT
RAKE TRIM/CABLE TRUSS	#10x1-1/2" ROOF SCREWS PAINTED	24" O.C.
RAKE TRIM/ROOF PURLIN	#10x1-1/2" ROOF SCREWS PAINTED	24" O.C.
OUTSIDE CORNER TRIM/PANELS	#10x1-1/2" ROOF SCREWS PAINTED	24" O.C.
RIDGE CAP/TOP PURLIN	#10x1-1/2" ROOF SCREWS PAINTED	9" O.C.
EXTERIOR PANEL JOINTS	SILICONE SEALANT	TUBE/32 IF
EXTERIOR BATTEN/PANEL	1-3/4" STAINLESS STEEL NAILS	HOLES PROVIDED
INSULATION STOP/TRUSSES	1-1/2" ROOFING NAIL	9 PER STOP
CEILING NAILERS/TRUSSES	16d cc SINKERS	2 ea END
PLYWOOD-OSB/TRUSS & NAIL w/BATTEN	8d cc SINKERS	8" O.C. PERMETER & 12" O.C. INTER
GLAS-PANEL/TRUSS & NAIL w/BATTEN	8d cc SINKERS & 1-3/4" STAINLESS NAILS	8" O.C. PERMETER & 12" O.C. INTER
STEEL CEILING/TRUSSES	#6x1" ROOF SCREWS PTD WHITE	9" O.C. EA FLAT
DIVIDE STUDS/PLATES	16d cc SINKER TOE-NAIL	2 TOP & BOTTOM
GLAS-PANEL/STUDS & PLATES	8d cc SINKERS & 1-3/4" STAINLESS NAIL	8" O.C. PERMETER & 12" O.C. INTER
INTERIOR PANEL JOINTS	SILICONE SEALANT	TUBE/32 IF
ALUMINUM BATTEN/PANEL JOINTS	1-3/4" STAINLESS NAIL	HOLES PROVIDED 6" O.C. CONTACT AREAS
VENTED SOFFIT PANEL TO TRUSSES AND FASCIA BLOCK	#10x1-1/2" ROOF SCREW	12" O.C.-2 RUNS
"J" METAL TRIM	8d cc SINKERS	24" O.C.



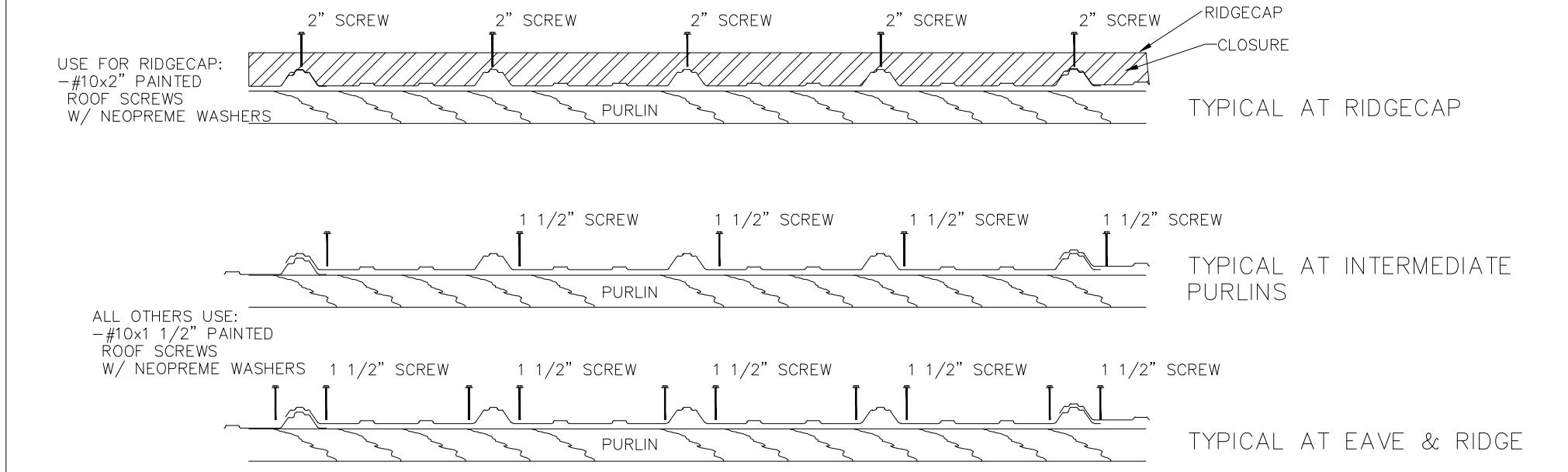
7 - RIDGECAP INSTALLATION



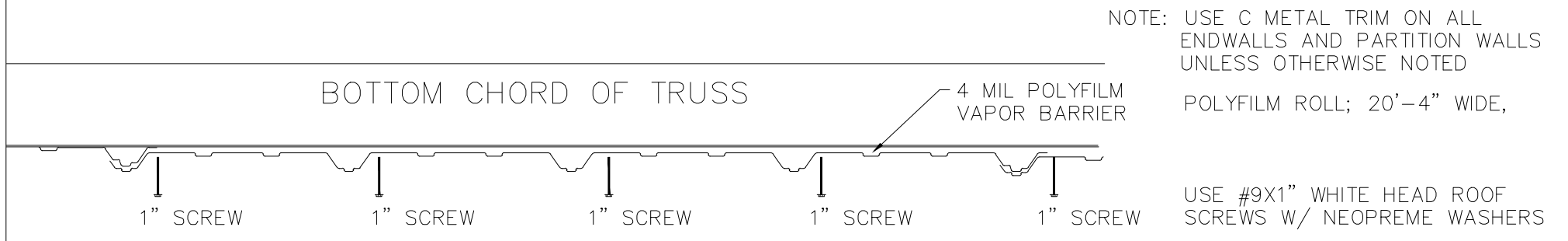
BBL BUILDINGS			
LAPPE CEMENT 42'-0"x128'-0"x13'-11" SOLID CORE BUILDING PACKAGE			
SCALE: NOTED	DATE: 11/3/11	REV. 0	SHEET: C1
DRAWN BY: RGW	REVIEWED BY: DMM	REV. 0	
DWG NO. 2011/WS/77451		REV. 0	



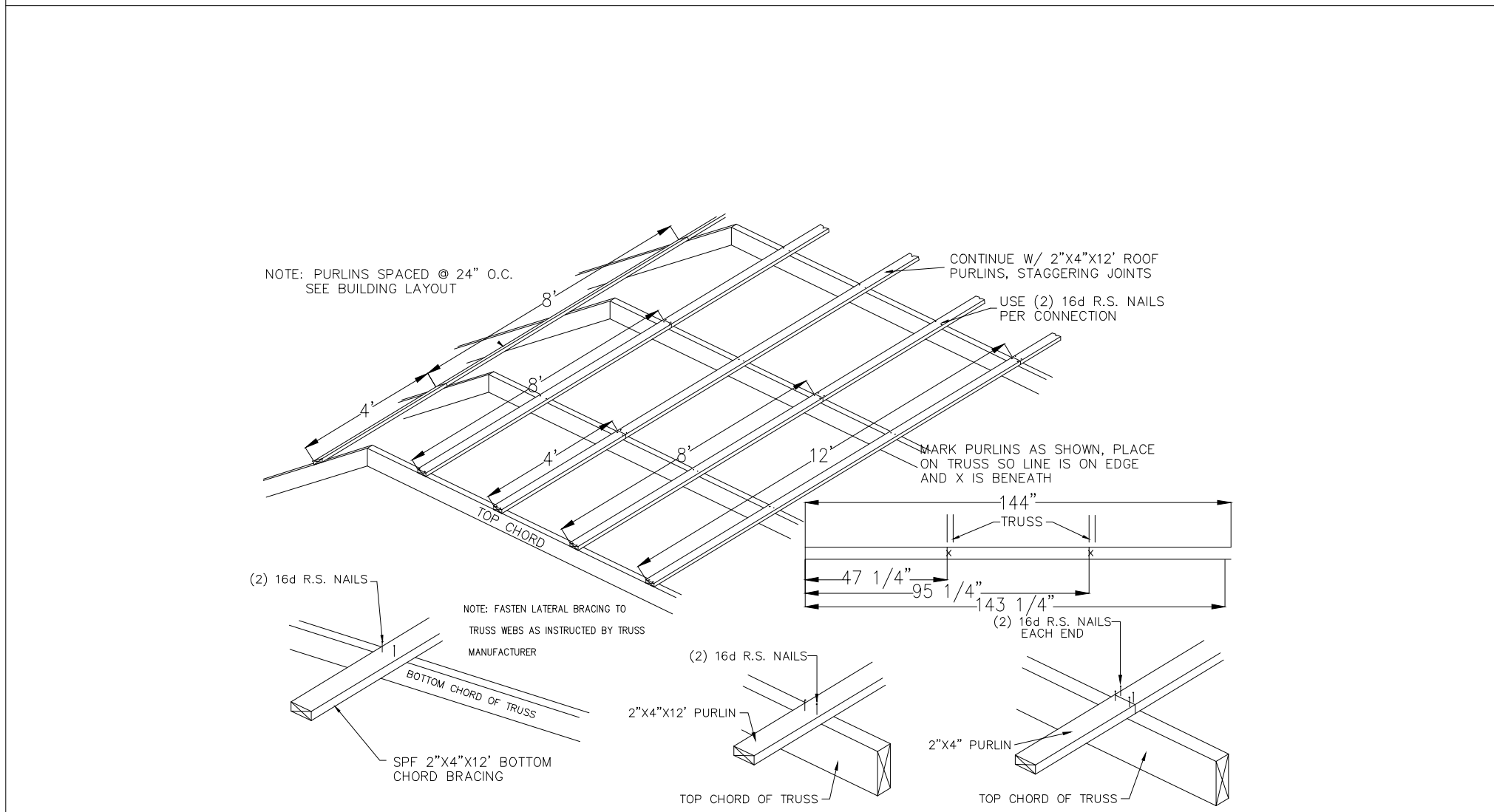
ROOF/CEILING STEEL LAP ROOF/CEILING SCREW INSTALLATION



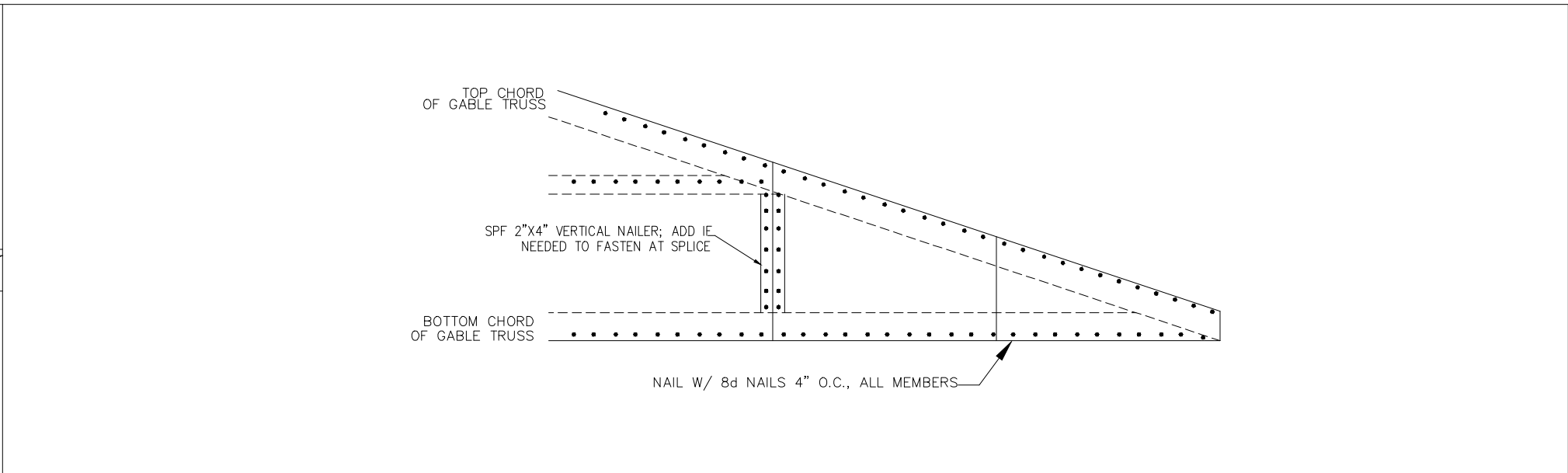
1 – ROOFSTEEL FASTENING



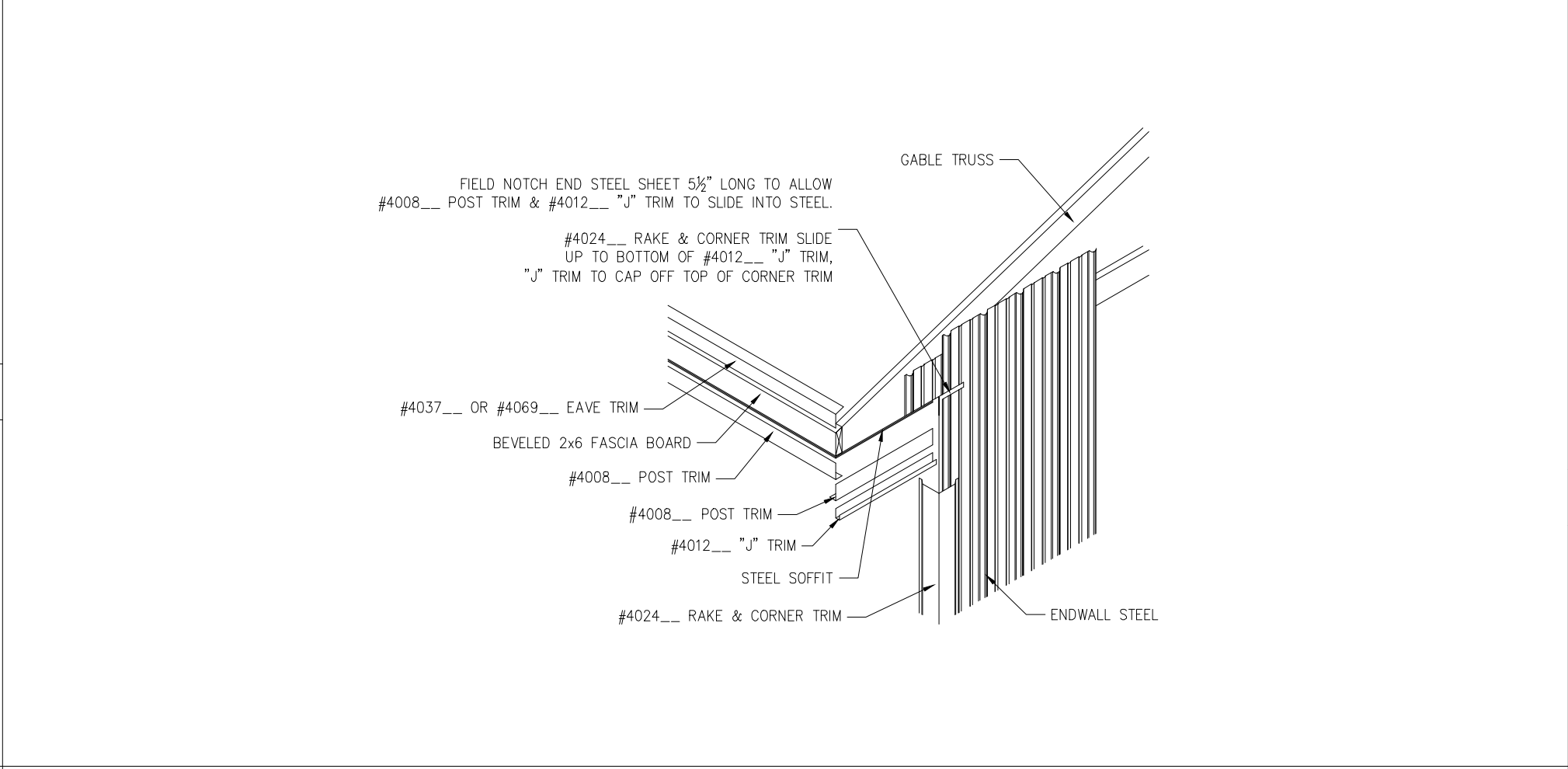
2 – CEILING STEEL FASTENING



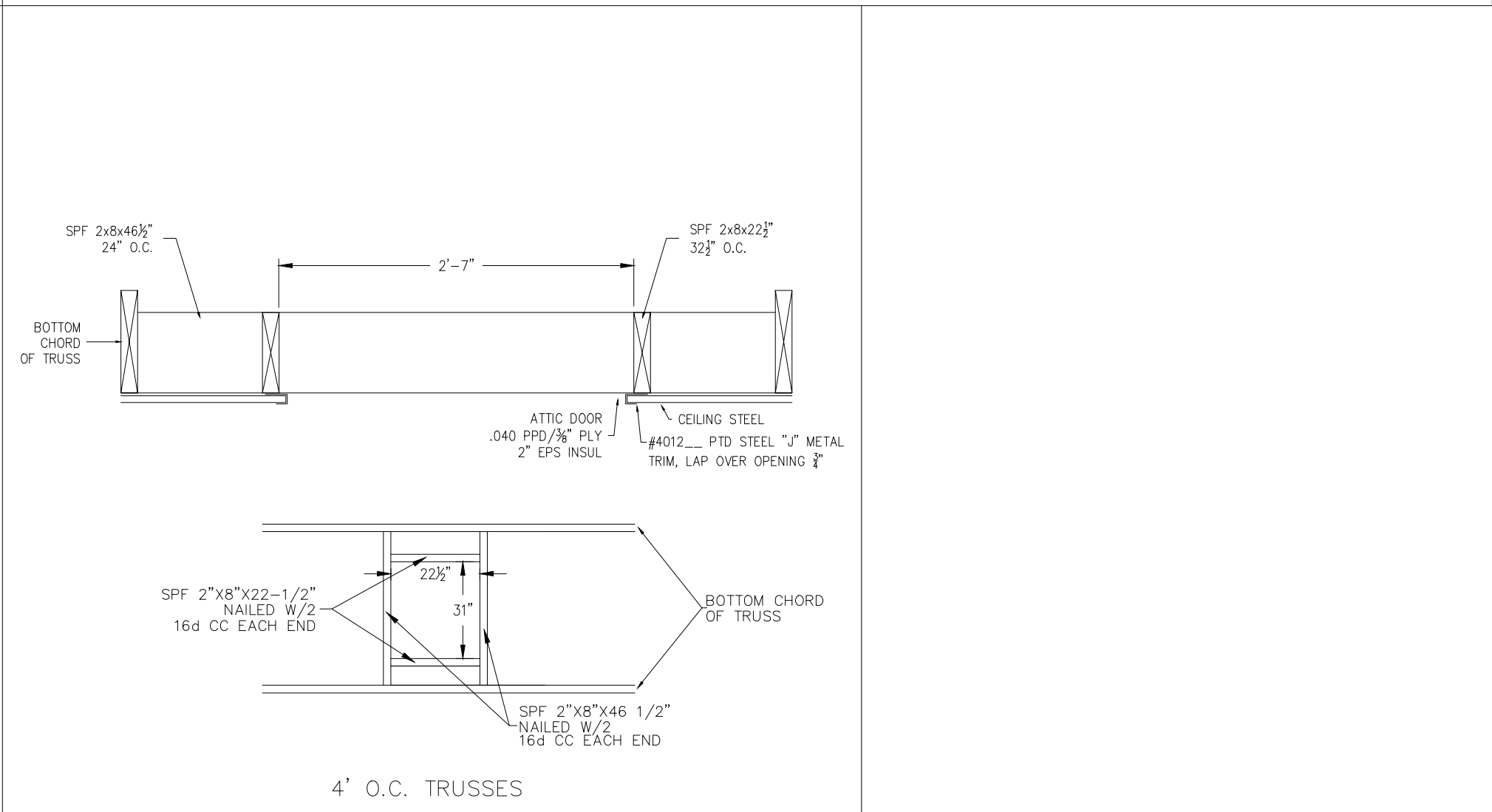
3 – 4' O.C. ROOF TRUSSES PURLIN CONNECTION



5 – GABLE END SHEATHING FASTENING



6 – EAVE TRIM DETAIL



8 – ATTIC ACCESS FRAMING



ENERGY PANEL STRUCTURES
102 EAST INDUSTRIAL PARK
GRAFTON, IA 51542
PHONE: 712/859-3219
FAX: 712/859-3275
WWW.EPSBUILDINGS.COM

BBL BUILDINGS
LAPPE CEMENT
42'-0"x128'-0"x13'-11"
SOLID CORE BUILDING PACKAGE

SCALE: NOTED	DATE: 11/3/11	REV: 0	SHEET:
DRAWN BY: RGW	REVIEWED BY: DMM	REV: 0	C2
DWG NO: 2011/WS/77451		REV: 0	