

The barnHouse

Size: 26' x 38'

Bedrooms: two

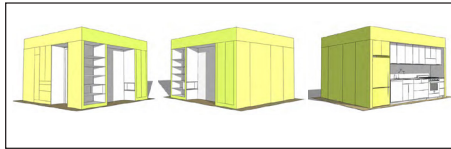
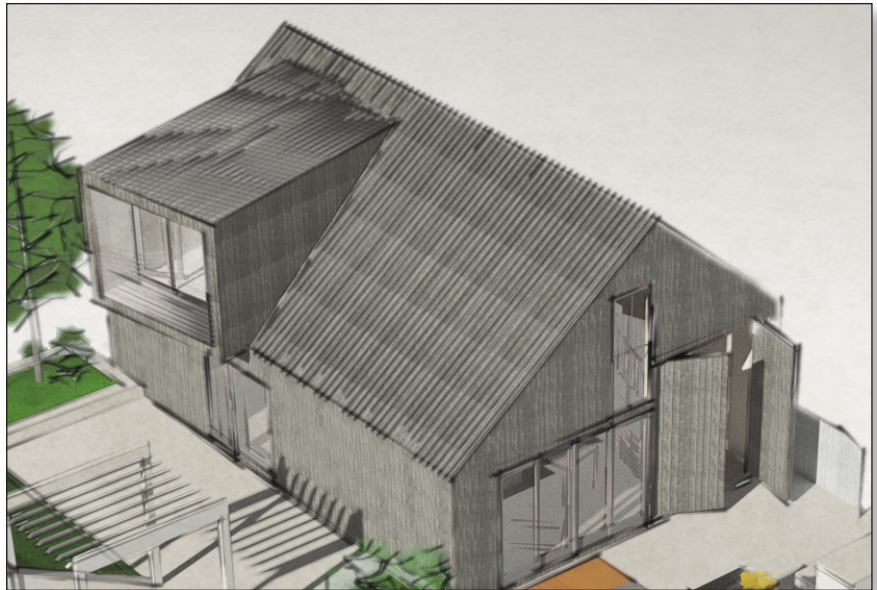
SIP walls: 8-1/4", R-33

SIP roof: 10-1/8", R-40

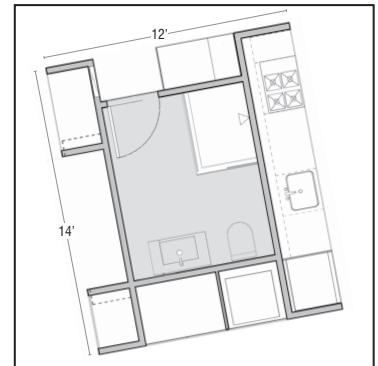
Special Features: Within the barnHouse is a flexible Smart Core which contains nearly all necessary utilities for the home and can be built as a module within a factory setting.

Designed by Alchemy Architects.
Manufactured and built by EPS.

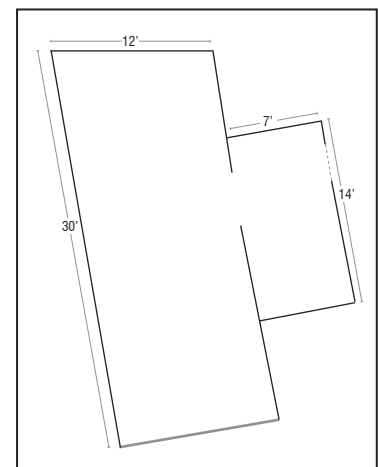
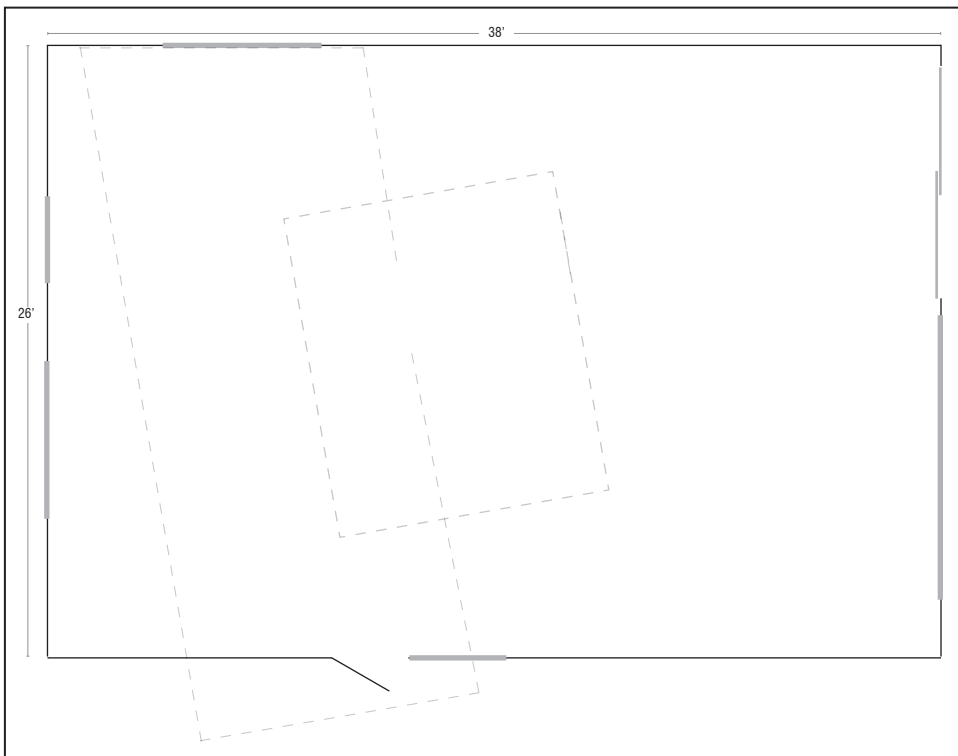
Projected ENERGY STAR HERS: 47



SmartCore



SmartCore



2nd Floor

The lightHouse



Size: 12' x 25'

Bedrooms: one

SIP walls: 8-1/4", R-33

SIP roof: 10-1/8", R-40

Special Features: Represents an opportunity for a 300- square foot cabin retreat, urban accessory dwelling unit, pool house, or guest house that can be used as-is with minimal infrastructure.

Designed by Alchemy Architects.
Manufactured and built by EPS.

