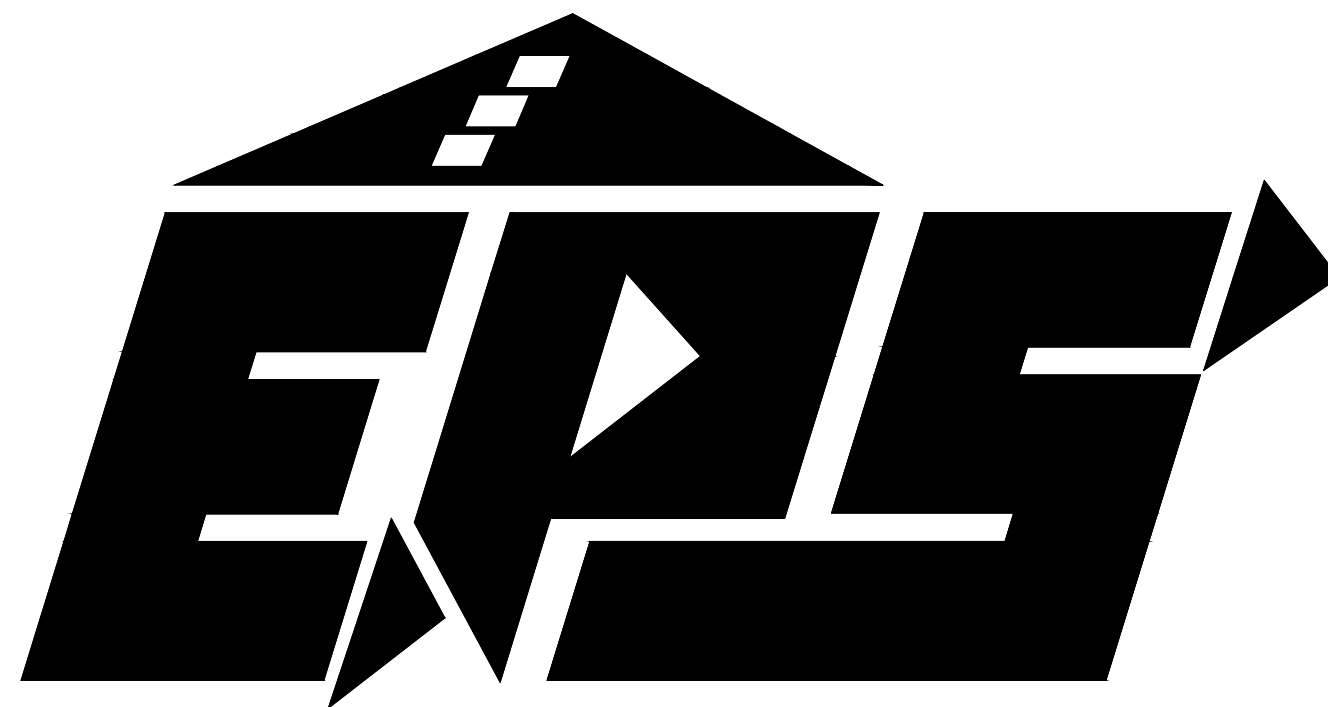
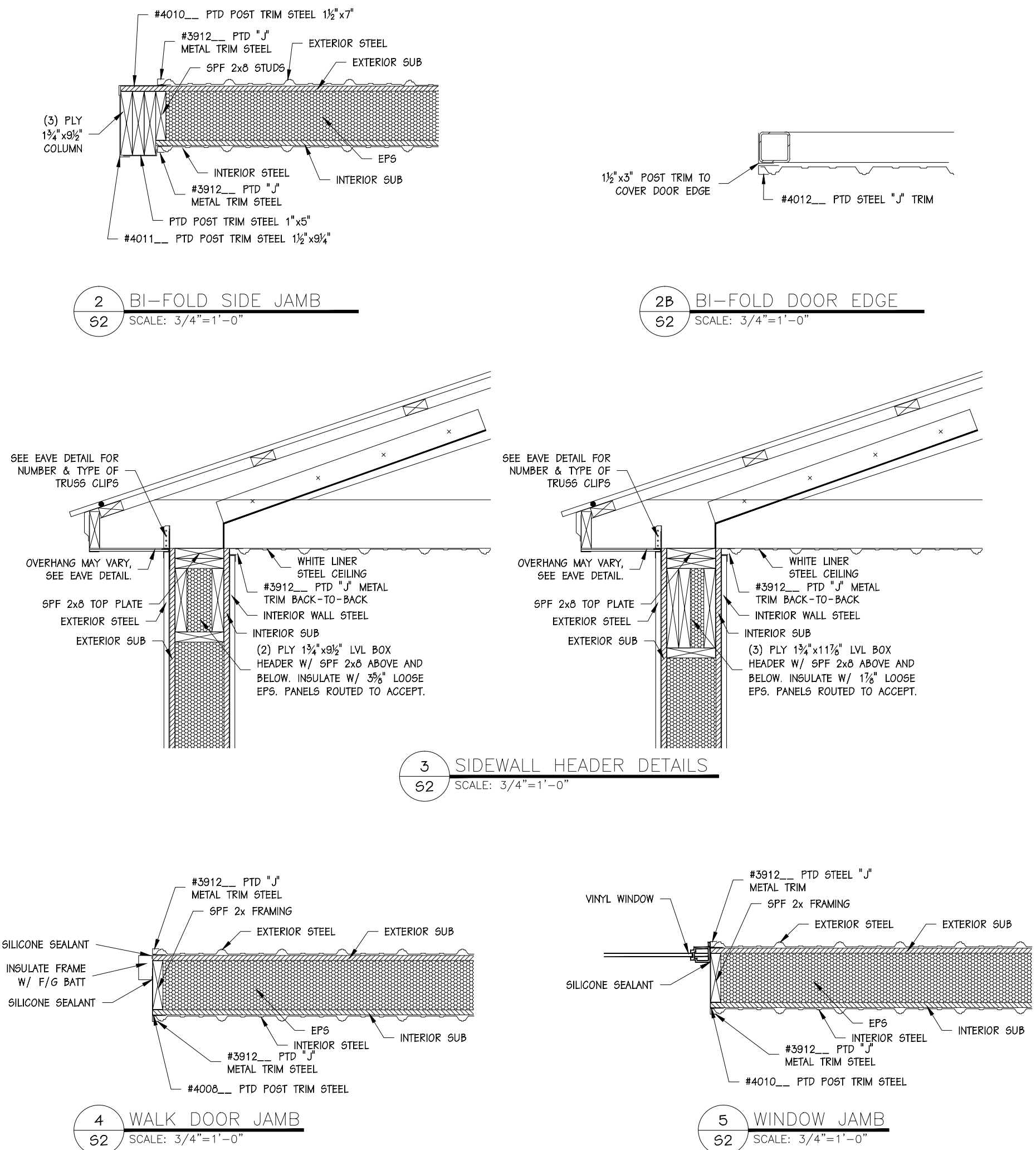
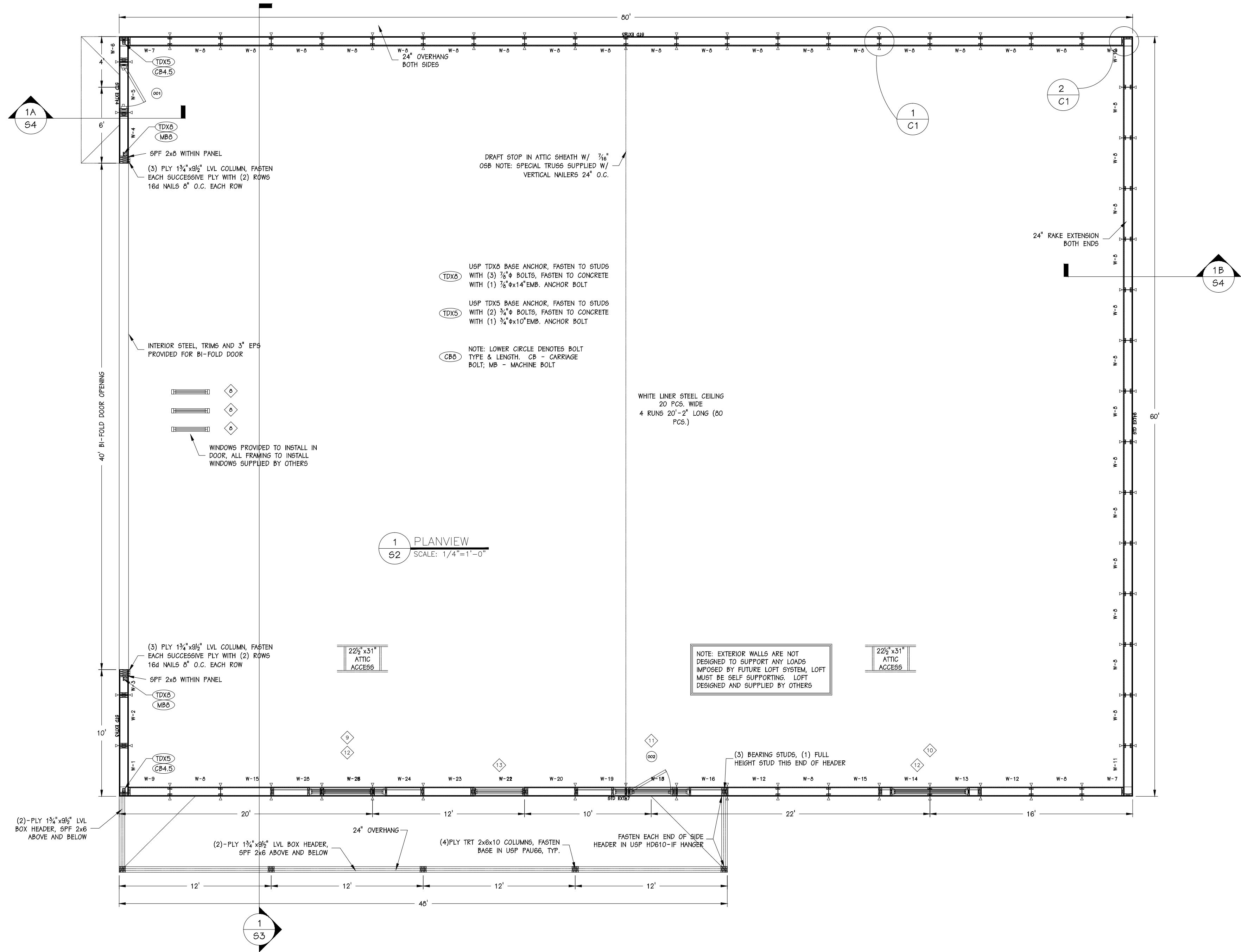
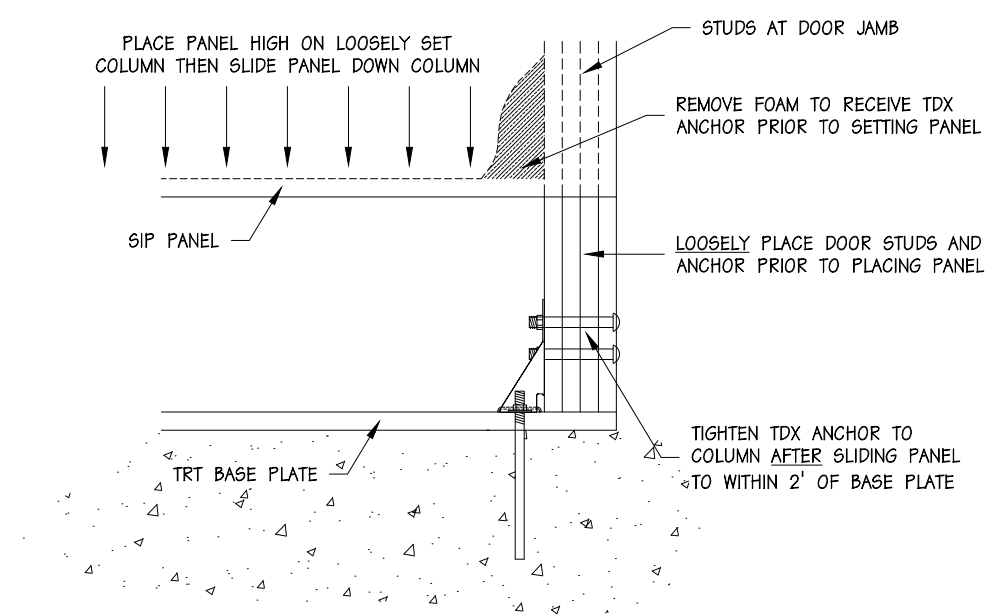


<div>DESIGN LOADS</div> <div>CODE BODY: IBC 2006</div> <div>Pg: 35 PSF</div> <div>Is: 0.8</div> <div>Ce: 1.0</div> <div>Cs: .87</div> <div>Ct: 1.1</div> <div>Ps: 25 PSF (REQUESTED)</div> <div>ROOF DEAD LOAD: 5 PSF</div> <div>CEILING LIVE LOAD: 0 PSF</div> <div>CEILING DEAD LOAD: 5 PSF</div> <div>WIND LOAD: 90 MPH</div> <div>EXPOSURE: B</div> <div>Iw: 0.87</div>				<div> AN EMPLOYEE-OWNED COMPANY</div> <div>ENERGY PANEL STRUCTURES</div> <div>102 EAST INDUSTRIAL PARK</div> <div>GRAETTINGER, IA 51342</div> <div>PHONE: 712/859-3219</div> <div>FAX: 712/859-3275</div> <div>WWW.EPSBUILDINGS.COM</div>				SHEET		DRAWING INDEX																			
								S1	COVER PAGE	S2	PLANVIEW	S3	CROSS SECTION	S4	CROSS SECTION	S5	ELEVATIONS	S6	TRUSS/BRACING LAYOUT	S7	STEEL LAYOUTS	C1	CONSTRUCTION DETAILS	C2	CONSTRUCTION DETAILS	T1	TRIM DETAILS	B1	TRUSS INSTALLATION
BUILDING COLORS								GENERAL INFORMATION																					
ROOF METAL				DARK BRONZE		WAINSCOT CORNER		DARK BRONZE		DEALER:																			
GABLES				TAUPE		WAINSCOT CAP		DARK BRONZE		QUAIL CONSTRUCTION																			
SIDES				TAUPE		CORNER		TAUPE		4045 HWY 71																			
WAINSCOT				DARK BRONZE		EAVE/FASCIA		DARK BRONZE		SPENCER, IA 51301																			
SOFFIT				DARK BRONZE		GABLE/RAKE		DARK BRONZE		PHONE: (712) 580-5100																			
RIDGE CAP				DARK BRONZE		DOOR TRIM		TAUPE		FAX: (712) 580-5101																			
PORCH CEILING				DARK BRONZE		PORCH J-TRIM		BRIGHT WHITE		OWNER:																			
COLUMNS				BRIGHT WHITE		PORCH FASCIA		DARK BRONZE		TIM STRAUB																			
										PETERSON, IA																			
1. SITEWORK: THE SITE SHALL BE GRADED TO PROVIDE DRAINAGE AWAY FROM THE BUILDING.										BUILDING TYPE:																			
2. BACK FILL: BACK FILL SHALL CONSIST OF GRAVEL, PEAROCK OR CRUSHED STONE 2 FOOT BACK FROM PANEL/FOUNDATION WALL. GRANULAR BACKFILL TO START AT OR BELOW BOTTOM OF FOOTING & EXTEND VERTICALLY TO WITHIN 8" OF GRADE. COVER GRANULAR MATERIAL W/ ASPHALT OR POLYETHYLENE STRIPS PRIOR TO ADDING 8" OF TOP SOIL. SLOPE AWAY FROM WALL ½" PER FOOT MIN. 6' FROM WALL.										SOLID CORE																			
3. CONCRETE WORK: THE CONCRETE WORK SHALL CONSIST OF ALL NECESSARY POUR-IN-PLACE CONCRETE FOOTINGS (OR FOUNDATION) AS PER BUILDING PLANS DESIGNED BY OTHERS THE CONCRETE SHALL MEET A MINIMUM COMPRESSIVE STRENGTH OF 3,500 PSI AT 28 DAYS. ALL CONCRETE SHALL BE DESIGNED IN ACCORDANCE WITH THE AMERICAN CONCRETE INSTITUTE BUILDING CODE REQUIREMENTS FOR STRUCTURAL CONCRETE (ACI 318-05) AND COMMENTARY (ACI 318R-05).										BUILDING USAGE:																			
4. WOOD FRAMING: ALL WOOD CONSTRUCTION SHALL BE IN CONFORMANCE WITH THE PROVISIONS OF THE 2005 EDITION OF THE NATIONAL DESIGN SPECIFICATION FOR WOOD CONSTRUCTION. UNLESS NOTED OTHERWISE ALL FRAMING LUMBER SHALL BE SPF#2 GRADE.										STORAGE																			
5. TRUSSES: WOOD TRUSSES ARE SHOP/PLANT FABRICATED WITH CONNECTOR PLATES PER SPECIFICATIONS. DESIGN CRITERIA ESTABLISHED BY THE TRUSS PLATE INSTITUTE - (ANSI/TPI 1-2002). REFER TO THE BCSI(BUILDING COMPONENT SAFETY INFORMATION) MANUAL FOR WOOD TRUSS TEMPORARY BRACING REQUIREMENTS.										BUILDING DIMENSIONS:																			
6. METAL CONNECTORS: ALL METAL CONNECTORS ARE OF GALVANIZED STEEL AND DESIGN APPROVED TO MEET OR EXCEED REQUIRED STANDARDS.										60'-0"x80'-0"x19'-11"																			
7. ROOFING AND SIDING MATERIAL: THE METAL ROOF AND WALLS SHALL BE EPS FULL FORMED PANEL. THE RIBBED DESIGN HAS ¾" HIGH PRIMARY RIBS 9" O.C. FOR BEAM STRENGTH AND 2 INTERMEDIATE LOW RIBS 3" O.C. FOR ADDITIONAL STIFFENING. THE EPS ROLL FORM PANEL IS MANUFACTURED TO ASTM SPECS. W/ AN 80,000 PSI MIN. YIELD POINT AND AN 82,000 PSI MINIMUM TENSILE STRENGTH. A FOUR-LAYER COLOR-CLAD PROCESS INCLUDES G-60 GALVANIZED ZINC COATING, BONDERIZED COATING, BAKED ON PRIMER COATING, AND A SILICONIZED POLYESTER(WHITE IS POLYESTER ONLY) BAKED-ON PAINT FINISH.										AREA:																			
8. FASTENERS: ALL ROOF AND WALL METAL SHEATHING SHALL BE FASTENED TO THE BUILDING STRUCTURE W/ TRUE-GRIP SCREWS W/ MILL POINT AND HEX HEAD. THE SCREWS SHALL HAVE A EPDM RUBBER WASHER TO ENSURE WEATHER TIGHTNESS.										4,800 SQ. FT.																			
9. SHORING AND BRACING: CONTRACTOR SHALL BE RESPONSIBLE FOR ALL TEMPORARY SHORING AND BRACING.										DRAWN:																			
										DMM																			
										REVIEWED BY:																			
										RGW																			
										DATE:																			
										4/26/2011																			
										REV:																			
										6/1/2011																			
										6/17/11																			
										JOB #:																			
										2011/WS/74663																			



INSTALLATION OF PANEL W/ TDX ANCHOR



6 SUGGESTED TDX INSTALLATION

SCALE: NONE

WINDOW SCHEDULE									
Remarks	Number	Quantity	Rough Width	Rough Height	Head Height	Header	Bearing Studs (Each Side)	Full Studs (Each Side)	
HAYFIELD, WHITE VINYL, FIXED W/ GRIDS	8	3	5'-0"	5'-0"	6'-0"	ALL FRAMING BY OTHERS	--	--	
HAYFIELD, WHITE VINYL, SLIDER W/ GRIDS	9	1	6'-0"	4'-0"	16'-0"	(3) 1-3/4"x11-7/8" LVL W/ 8" 2x6 ABOVE AND BELOW, INSULATE BETWEEN WITH 1-7/8" EPS	1	1	
HAYFIELD, WHITE VINYL, SLIDER W/ GRIDS	10	1	6'-0"	4'-0"	16'-0"	(2) 1-3/4"x8-1/2" LVL W/ 8" 2x6 ABOVE AND BELOW, INSULATE BETWEEN WITH 3-5/8" EPS	1	1	
HAYFIELD, WHITE VINYL, SLIDER W/ GRIDS	11	1	6'-0"	4'-0"	16'-0"	(3) 1-3/4"x11-7/8" LVL W/ 8" 2x6 ABOVE AND BELOW, INSULATE BETWEEN WITH 1-7/8" EPS	SEE PLAN	1	
HAYFIELD, WHITE VINYL, SLIDER W/ GRIDS	12	1	6'-0"	5'-0"	6'-0"	NONE - (WRAP OPENING IN SPF 2x MATERIAL)	--	--	
HAYFIELD, WHITE VINYL, SLIDER W/ GRIDS	12	1	4'-0"	3'-0"	6'-0"	NONE - (WRAP OPENING IN SPF 2x MATERIAL)	--	--	
HAYFIELD, WHITE VINYL, SLIDER W/ GRIDS	13	1	4'-0"	3'-0"	6'-0"	NONE - (WRAP OPENING IN SPF 2x MATERIAL)	0	2	

DOOR OPENING/HEADER SCHEDULE									
Number	Quantity	Remarks	Rough Width	Rough Height	Head Height	Header	Bearing Studs (Each Side)	Full Studs (Each Side)	
001	1	AJ 7100 WHITE, 22x36 9-LITE, BRUSHED CHROME KEYS LEVER	5'-4 3/8"	6'-9 1/8"	5'-9 1/8"	NONE - (WRAP OPENING IN SPF 2x MATERIAL)	--	--	
002	1	AJ 7100 WHITE, 22x36 21-LITE, BRUSHED CHROME KEYS LEVER	5'-4 3/8"	6'-9 1/8"	5'-9 1/8"	NONE - (WRAP OPENING IN SPF 2x MATERIAL)	--	--	

AN EMPLOYEE-OWNED COMPANY

ENERGY PANEL STRUCTURES
102 EAST INDUSTRIAL PARK
GRANTTOWN, IA 51542
PHONE: 712/859-3219
FAX: 712/859-3275
WWW.EPSBUILDINGS.COM

QUAIL CONSTRUCTION

TIM STRAUB

60'-0"x80'-0"x19'-11"

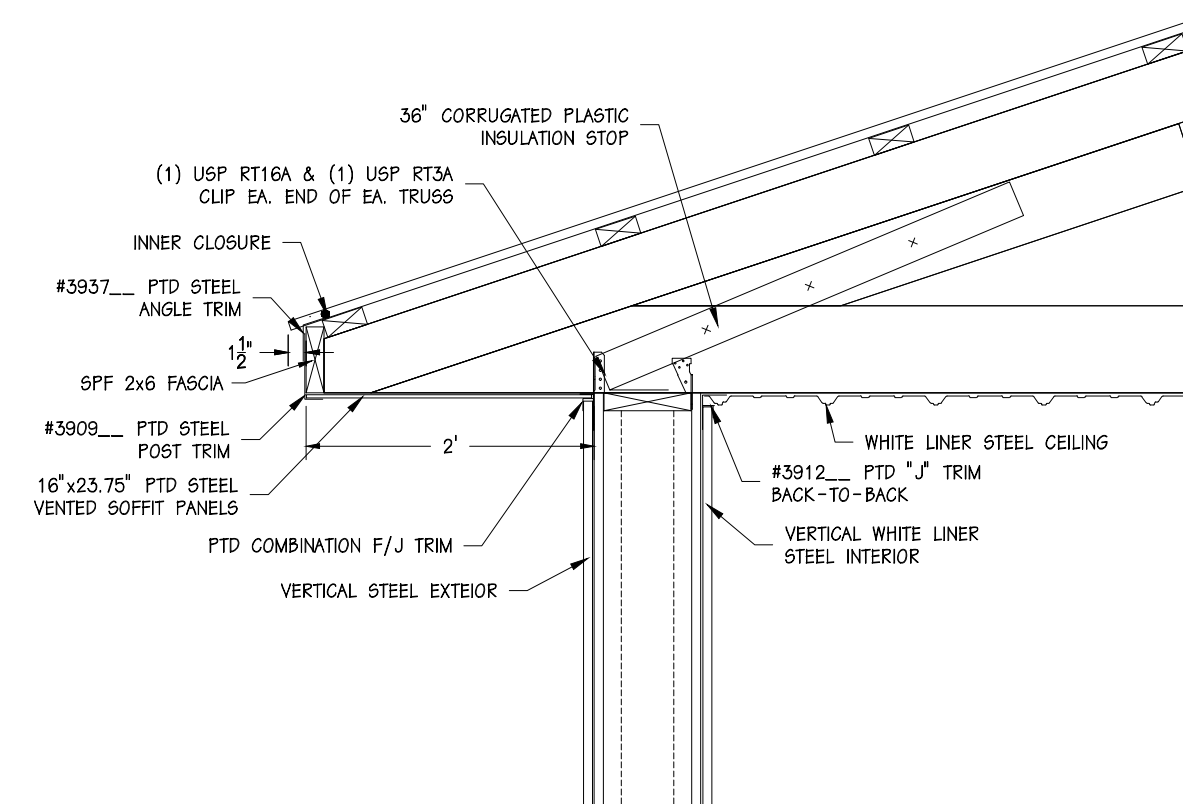
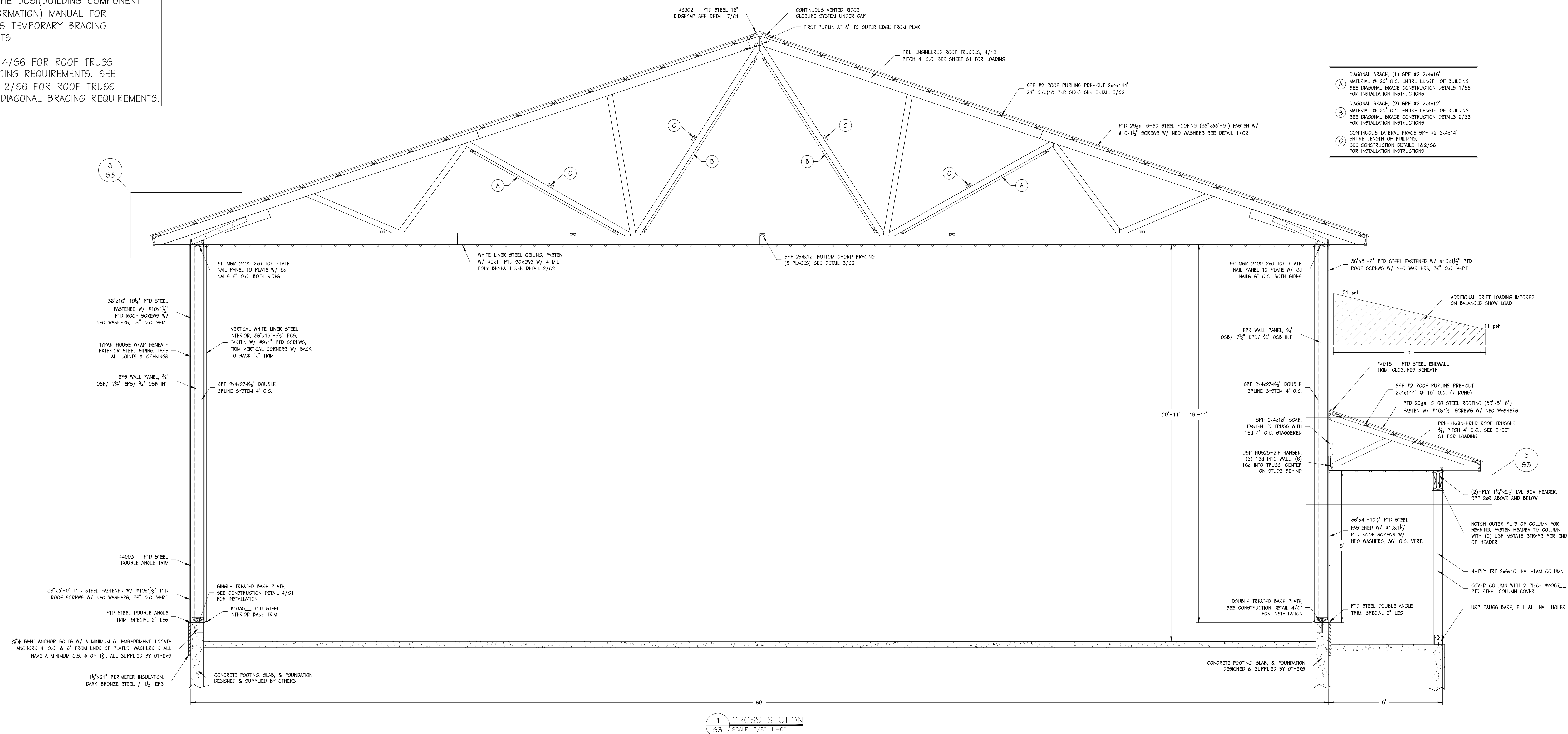
SOLID CORE BUILDING PACKAGE

SCALE: NOTED DATE: 4/26/11 REV: 6/1/11 SHEET: S2

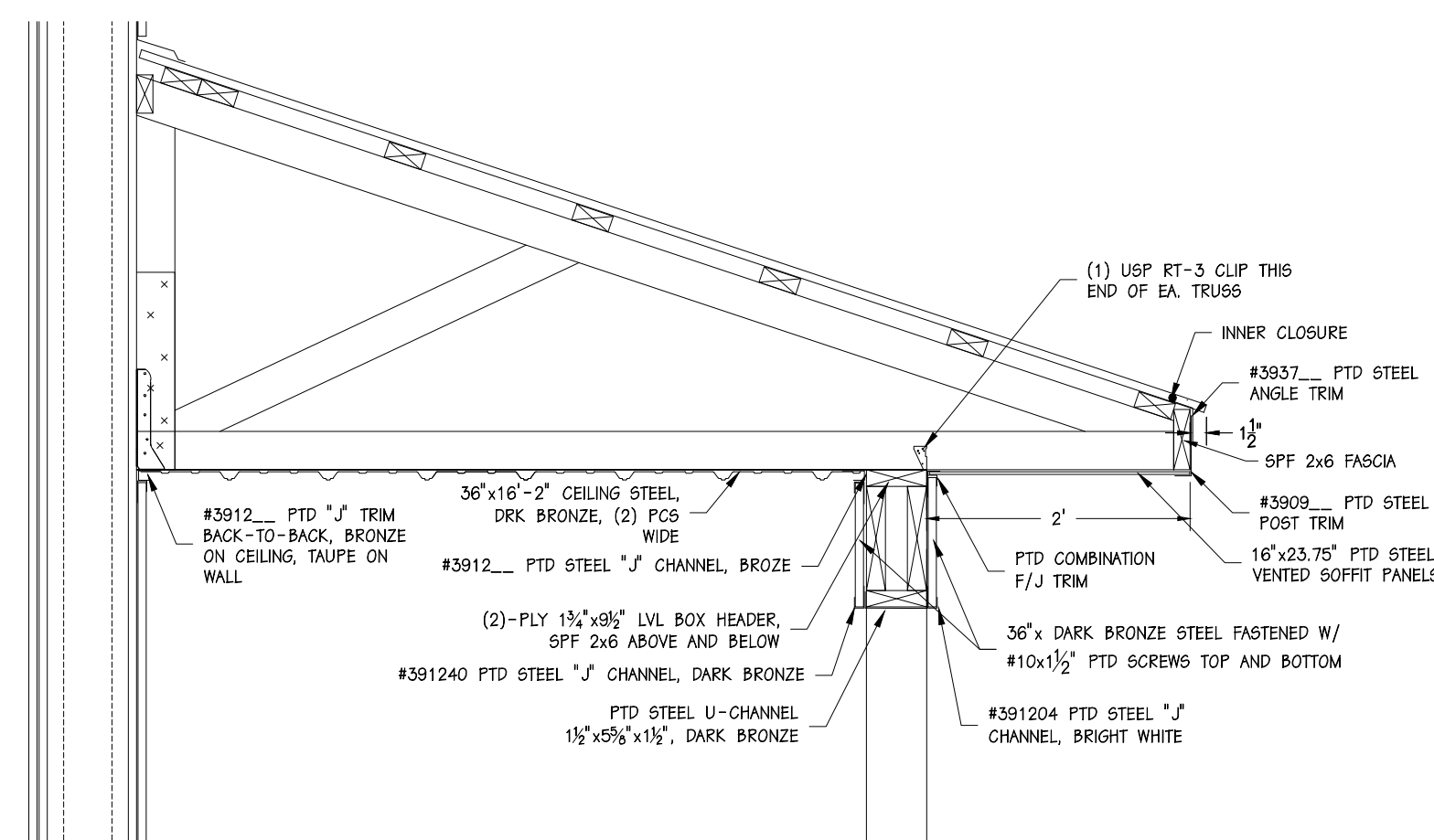
DRAWN BY: DMM REVIEWED BY: RGM REV: 6/17/11

DWG NO. 2011/WS/74663 REV: 0

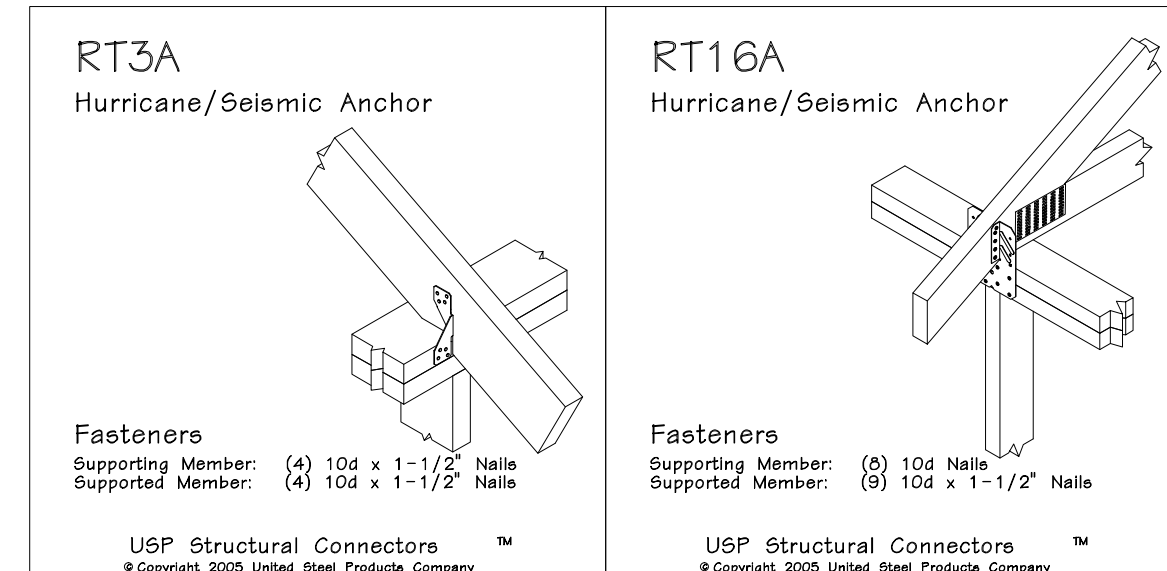
SEE DETAIL 4/S6 FOR ROOF TRUSS
CROSS BRACING REQUIREMENTS. SEE
DETAIL 1 & 2/S6 FOR ROOF TRUSS
LATERAL & DIAGONAL BRACING REQUIREMENTS.



2 EAVE DETAIL
S3 SCALE: 3/4"=1'-0"



3 PORCH EAVE DETAIL
S3 SCALE: 3/4"=1'-0"



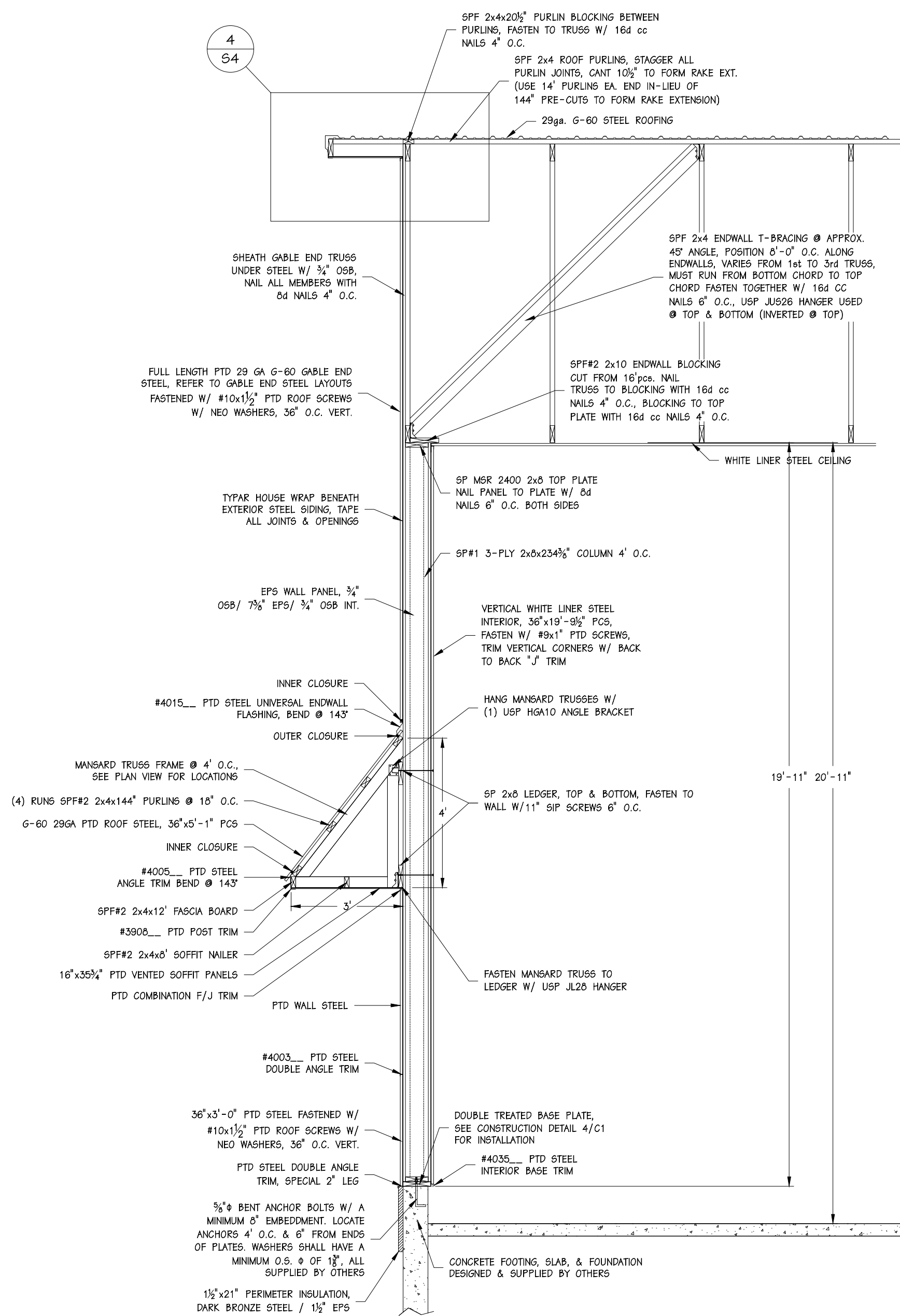
ENERGY PANEL STRUCTURES
102 EAST INDUSTRIAL PARK
GRAETTINGER, IA 51342
PHONE: 712/859-3219
FAX: 712/859-3275
WWW.EPSBUILDINGS.COM

QUAIL CONSTRUCTION
TIM STRAUB 60'-0"x80'-0"x19'-11" SOLID CORE BUILDING PACKAGE

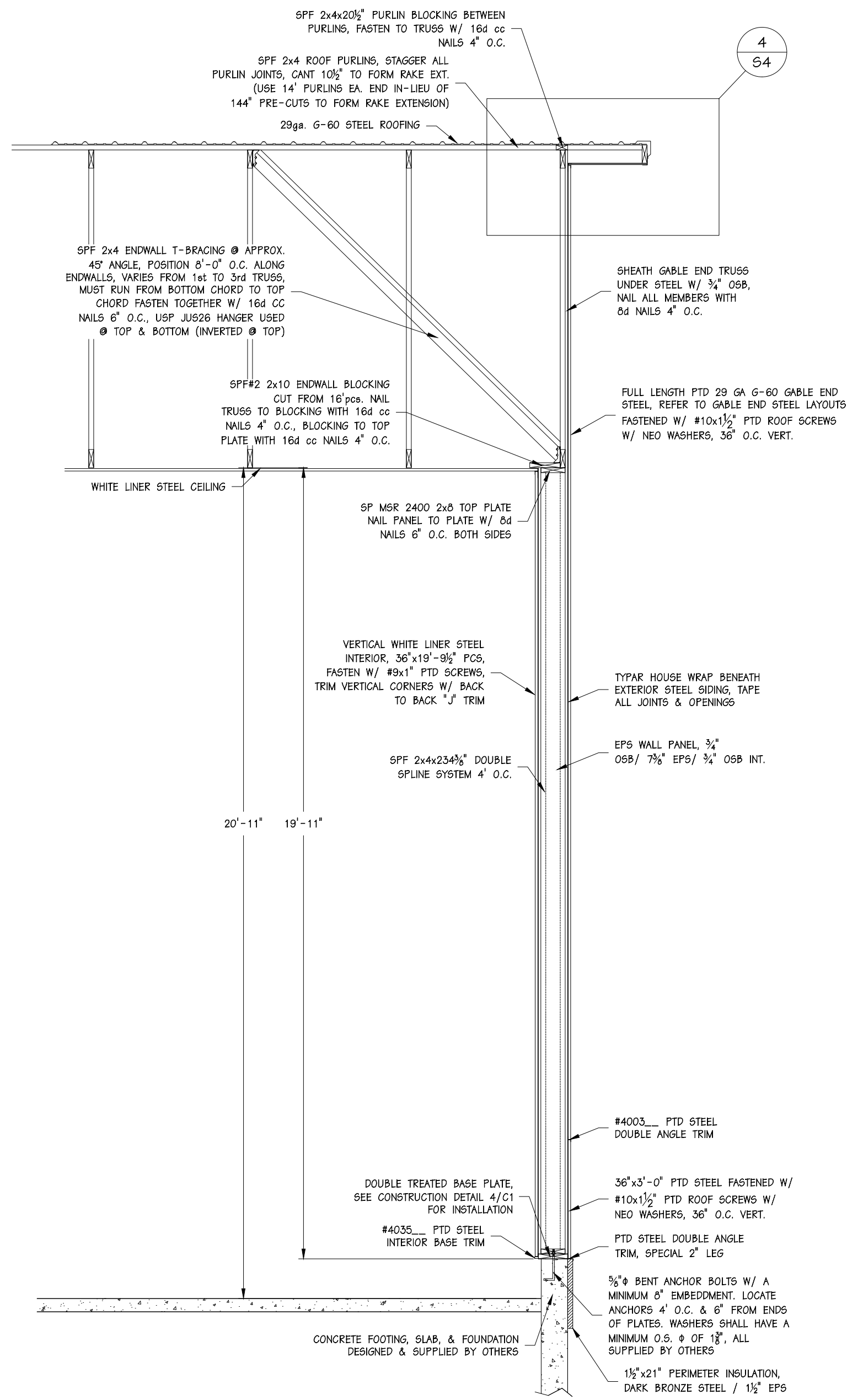
SCALE: NOTED	DATE: 4/26/11	REV: 6/1/11	SHEET: S3
DRWN BY: DMM	REVIEWED BY: RGW	REV: 6/17/11	
DWG NO. 2011/WS/74663		REV: 0	

REFER TO THE BCSI(BUILDING COMPONENT SAFETY INFORMATION) MANUAL FOR WOOD TRUSS TEMPORARY BRACING REQUIREMENTS

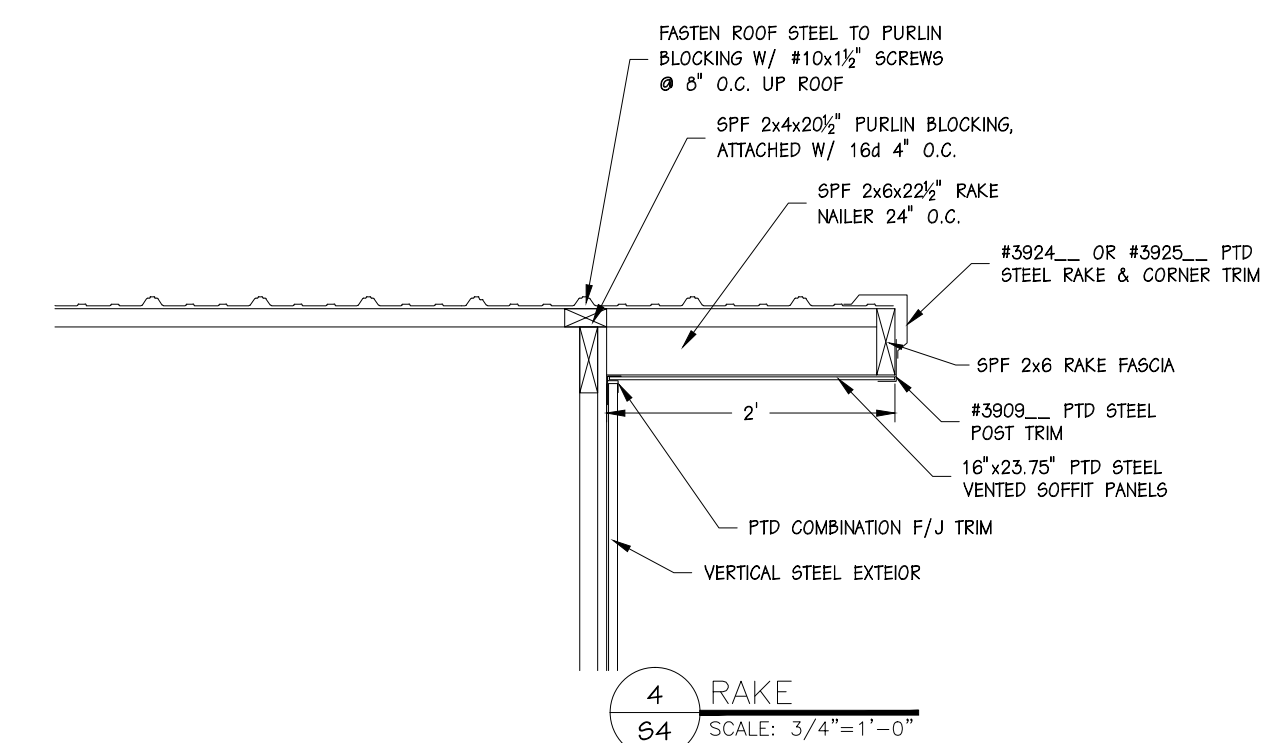
SEE DETAIL 4/66 FOR ROOF TRUSS CROSS BRACING REQUIREMENTS. SEE DETAIL 1 & 2/66 FOR ROOF TRUSS LATERAL & DIAGONAL BRACING REQUIREMENTS.



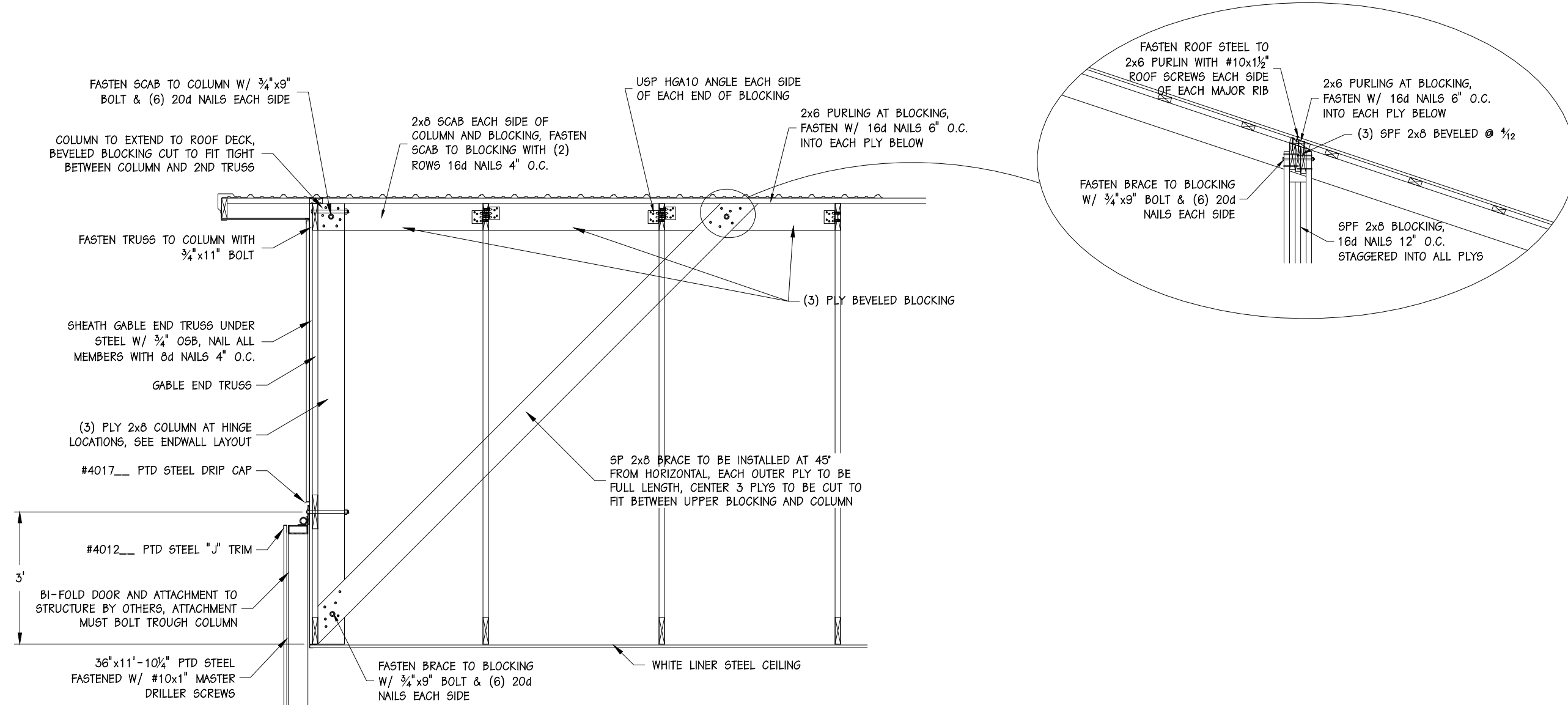
1A ENDWALL SECTION
S4 SCALE: 3/8"=1'-0"



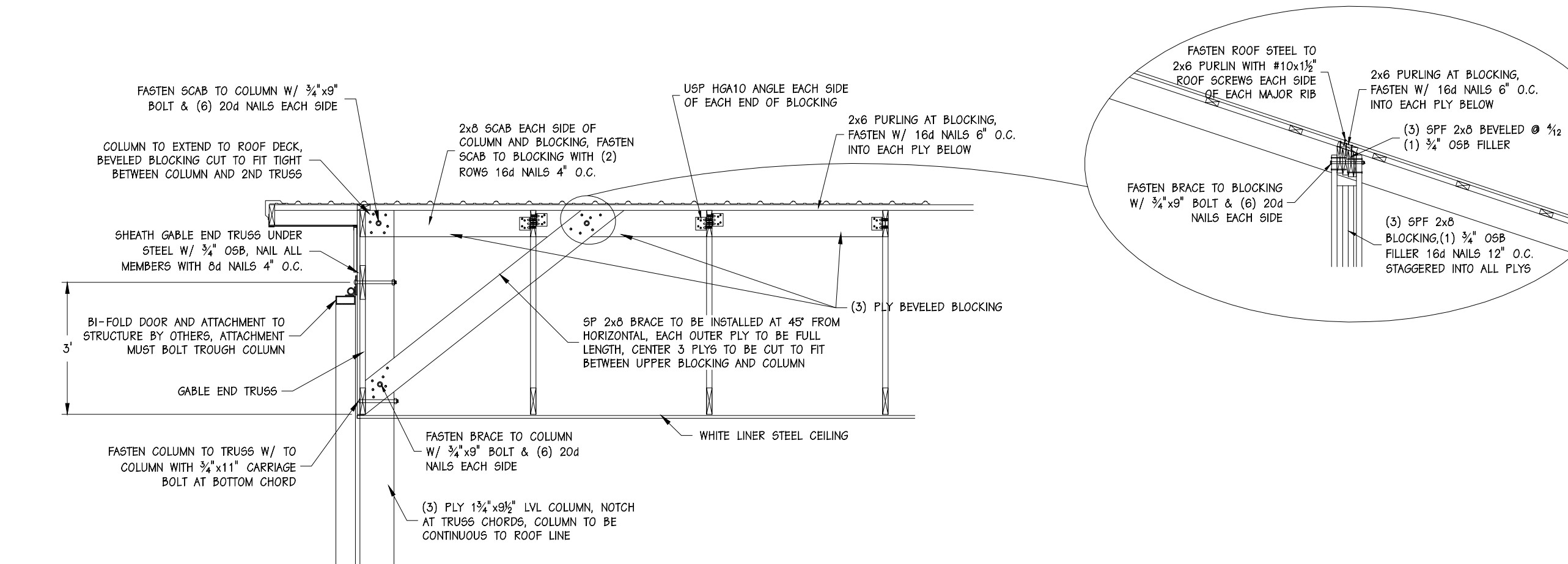
1B ENDWALL SECTION
S4 SCALE: 3/8"=1'-0"



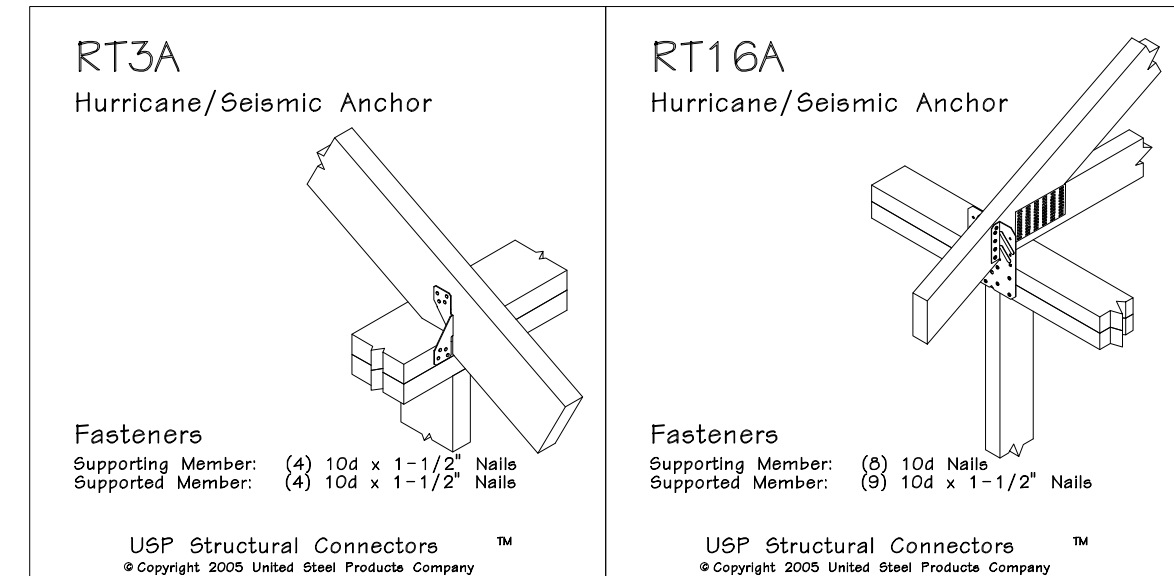
4 RAKE
S4 SCALE: 3/4"=1'-0"




2 BI-FOLD DOOR BRACING AT CENTER HINGES
S4 SCALE: 3/8"=1'-0"



3 BI-FOLD DOOR BRACING AT DOOR COLUMN
S4 SCALE: 3/8"=1'-0"



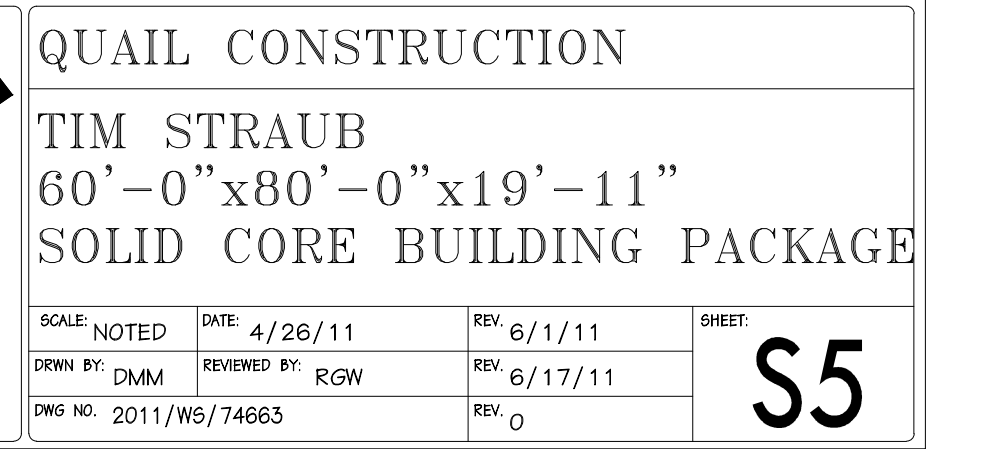
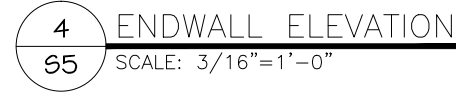
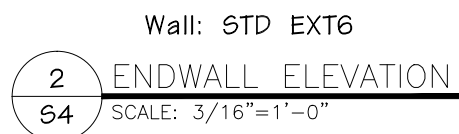
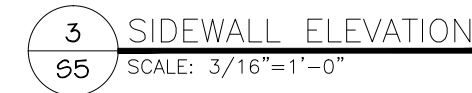
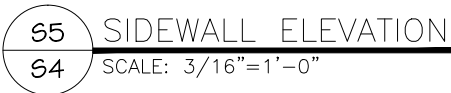


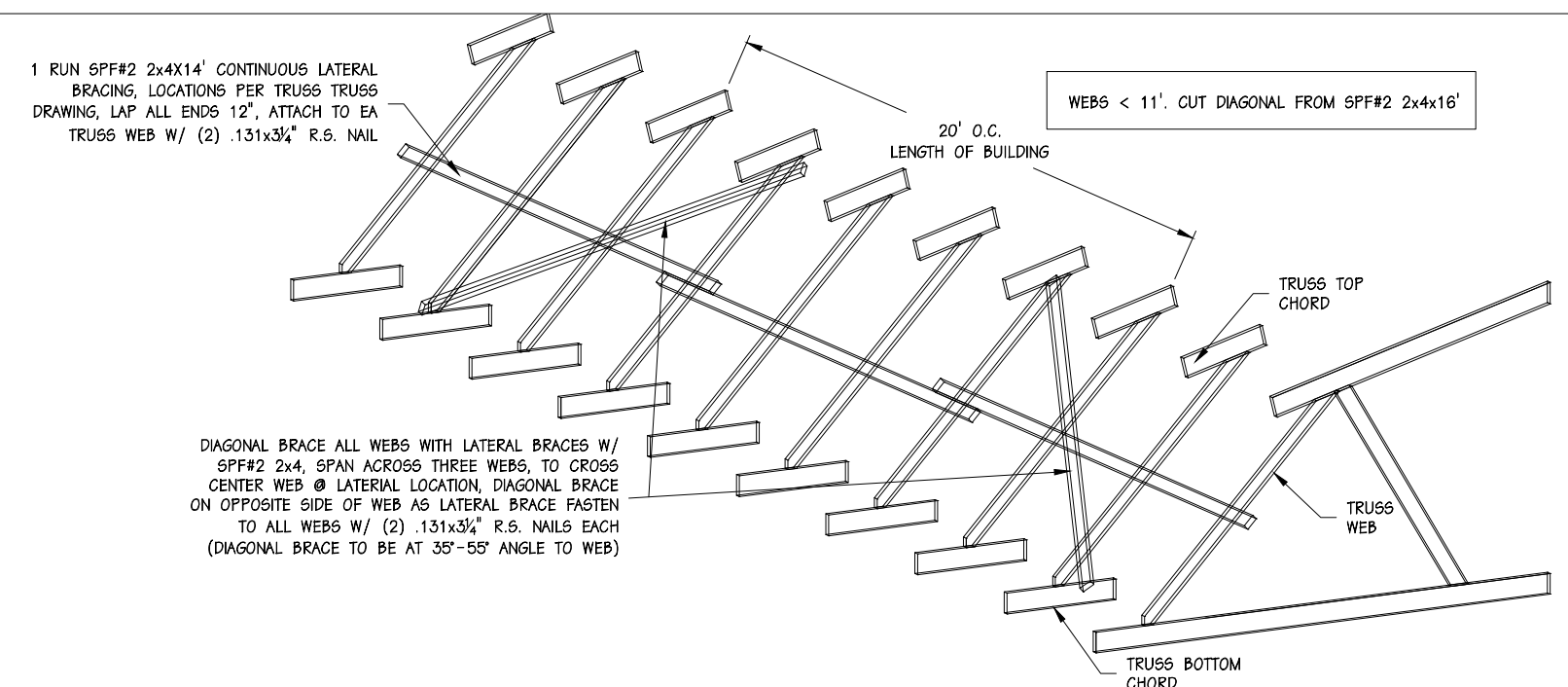
ENERGY PANEL STRUCTURES
102 EAST INDUSTRIAL PARK
GRANTTOWN, IA 51542
PHONE: 712/859-3219
FAX: 712/859-3275
WWW.EPSBUILDINGS.COM

QUAIL CONSTRUCTION

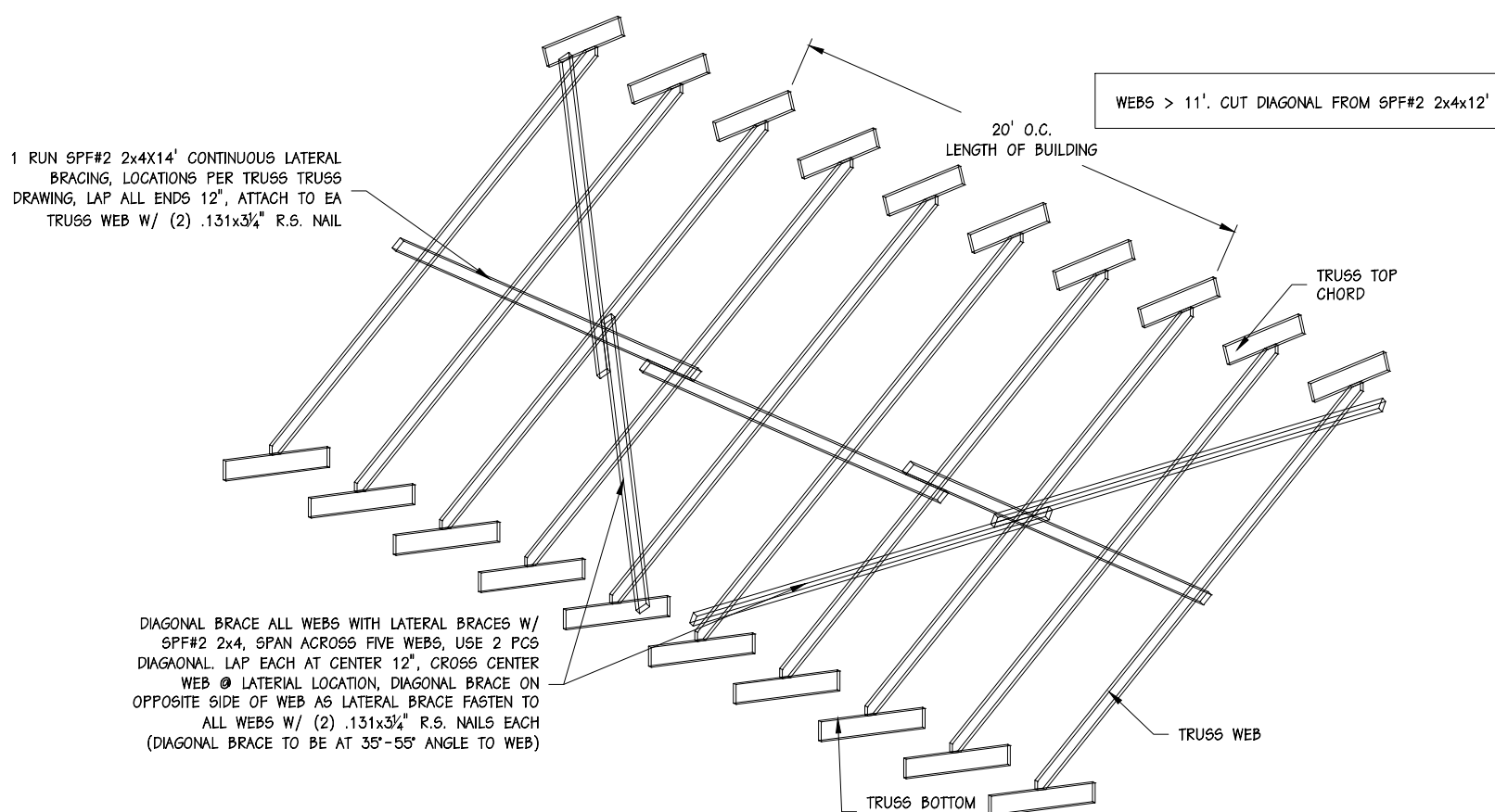
TIM STRAUB
60'-0"x80'-0"x19'-11"
SOLID CORE BUILDING PACKAGE

SCALE: NOTED	DATE: 4/26/11	REV: 6/1/11	SHEET: S4
DRAWN BY: DMM	REVIEWED BY: RGM	REV: 6/17/11	
DWG NO: 2011/WS/74663		REV: 0	

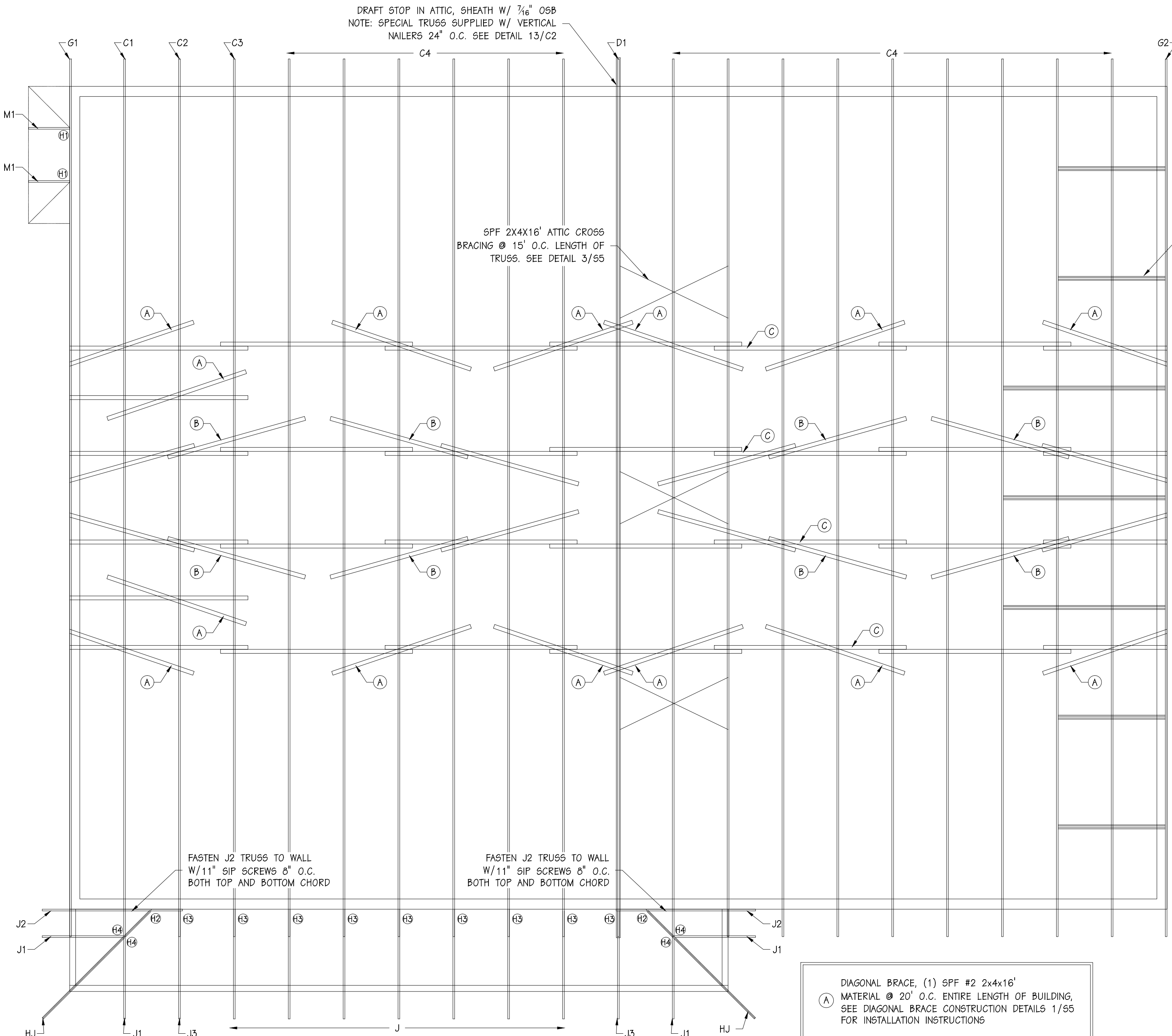




1 4' O.C. TRUSSES (1) RUN LATERAL BRACE, WEB < 11'
SCALE: NONE



2 4' O.C. TRUSSES (1) RUN LATERAL BRACE, WEB > 11'
SCALE: NONE



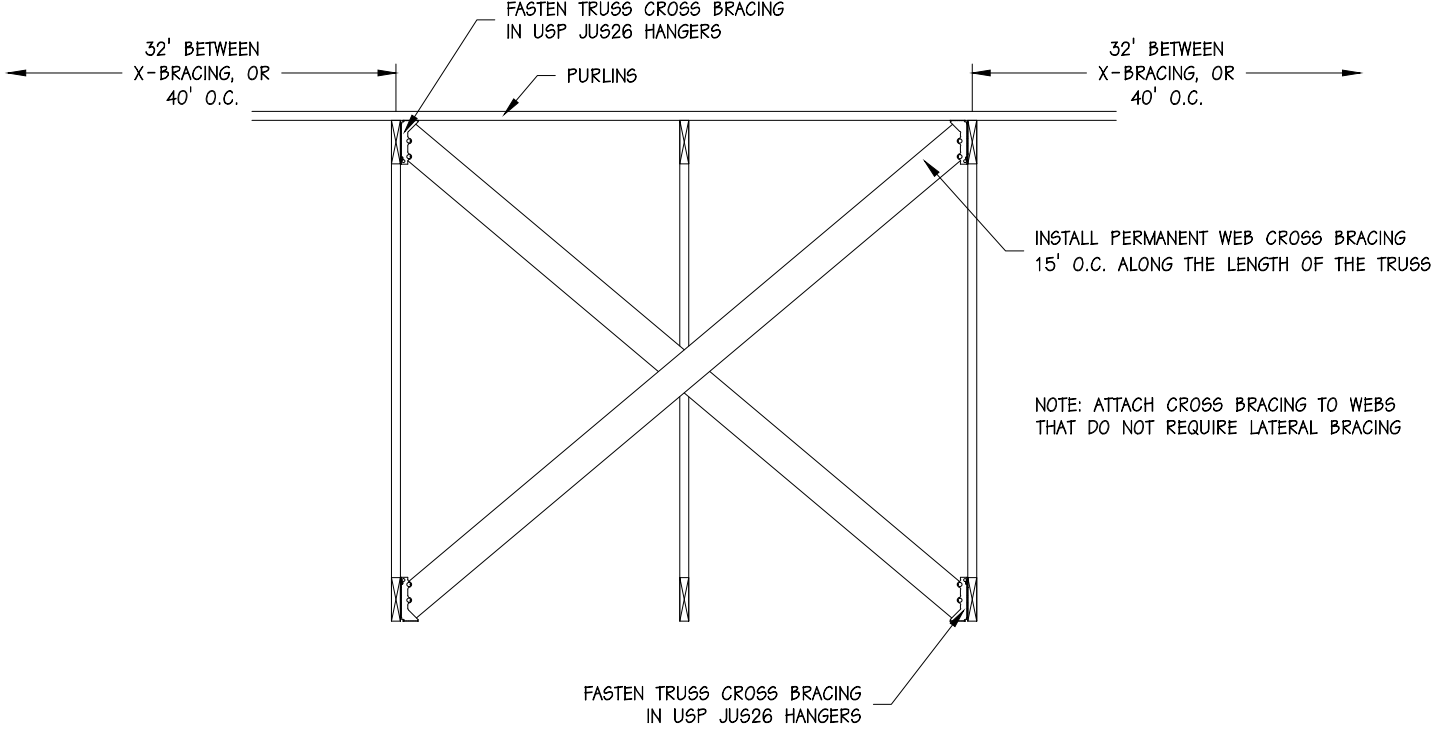
HANGER SYMBOL	HANGER TYPE	QUANTITY	FASTENERS HEADER	FASTENERS JOIST
H1	USP JLS25	2	(10) 10d	(6) 10d x 1 1/2"
H2	USP HLC26	2	(16) 16d	(5) 10d HIP (7) 10d JACK
H3	USP HUS25-2IF	9	(6) 16d	(6) 16d
H4	USP SNE'S TC & BC	5	(6) 8d x 1 1/2"	(6) 8d x 1 1/2"

DIAGONAL BRACE, (1) SPF #2 2x4x16'
MATERIAL @ 20' O.C. ENTIRE LENGTH OF BUILDING, SEE DIAGONAL BRACE CONSTRUCTION DETAILS 1/55 FOR INSTALLATION INSTRUCTIONS

DIAGONAL BRACE, (2) SPF #2 2x4x12'
MATERIAL @ 20' O.C. ENTIRE LENGTH OF BUILDING, SEE DIAGONAL BRACE CONSTRUCTION DETAILS 2/55 FOR INSTALLATION INSTRUCTIONS

CONTINUOUS LATERAL BRACE SPF #2 2x4x14', ENTIRE LENGTH OF BUILDING, SEE CONSTRUCTION DETAILS 1&2/55 FOR INSTALLATION INSTRUCTIONS

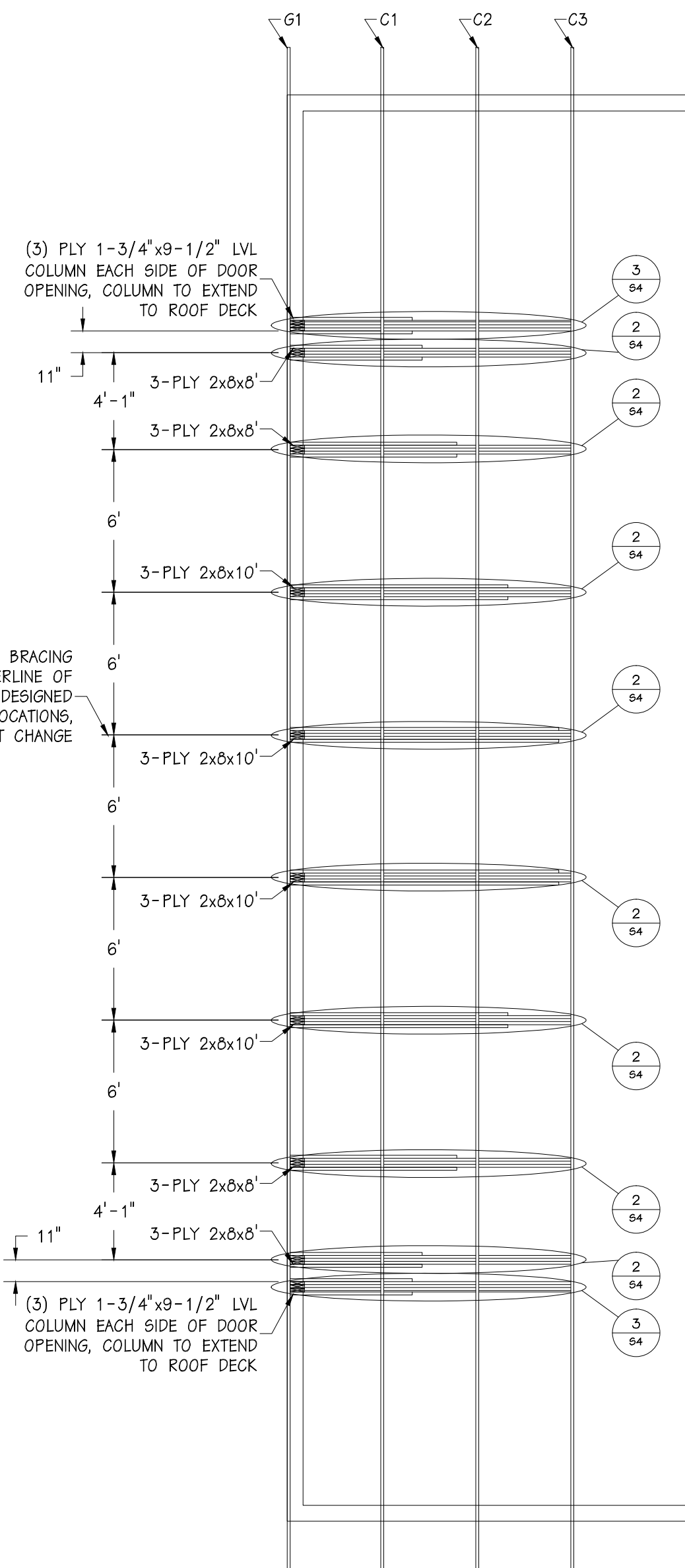
4 ROOF TRUSS LAYOUT
SCALE: 1/4"=1'-0"



3 ROOF TRUSS "X" BRACING
SCALE: NONE

SPF 2X4X16' "H" BRACING @ 8' O.C. SEE ENDWALL CROSS SECTION

HYDRAULIC DOOR ATTIC BRACING DIMENSIONS ARE TO THE CENTERLINE OF 3PLY 2x8 COLUMNS, TRUSSES DESIGNED TO ABSORB LOADS IN THESE LOCATIONS, THUS LOCATIONS CANNOT CHANGE



4B BI-FOLD DOOR BRACING LAYOUT
SCALE: 1/4"=1'-0"

JUS26
Slant Nail Joist Hanger

Ref. # LUS26

Code Listings:
NEC 608
ICBO EB ER-5356
LA CITY REC 25327
DADCO CO. 01-0327.04
U.S. PAT. #5,217,317

Fasteners
Supporting Member: (4) 8d x 1-1/2" Nails
Supported Member: (4) 10d Nails

USP Lumber Connectors
© Copyright 1998 United Steel Products Company

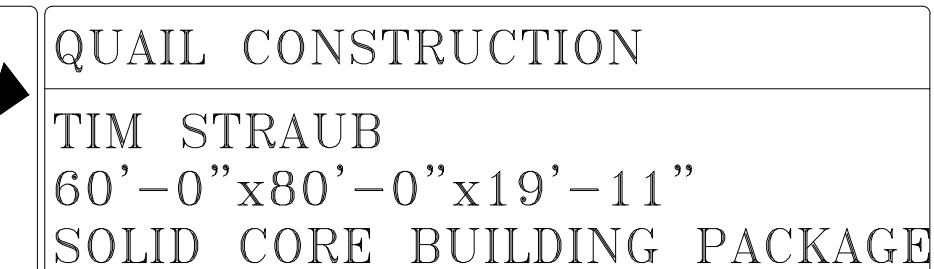
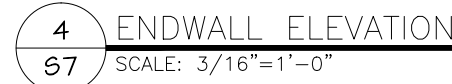
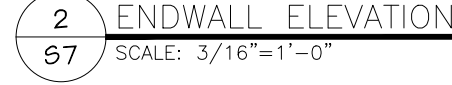
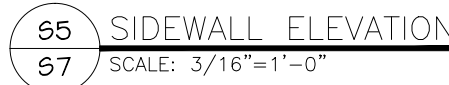
EPS
AN EMPLOYEE-OWNED COMPANY

ENERGY PANEL STRUCTURES
102 EAST INDUSTRIAL PARK
GRAFFETTINGER, IA 51342
PHONE: 712/859-3219
FAX: 712/859-3275
WWW.EPSBUILDINGS.COM

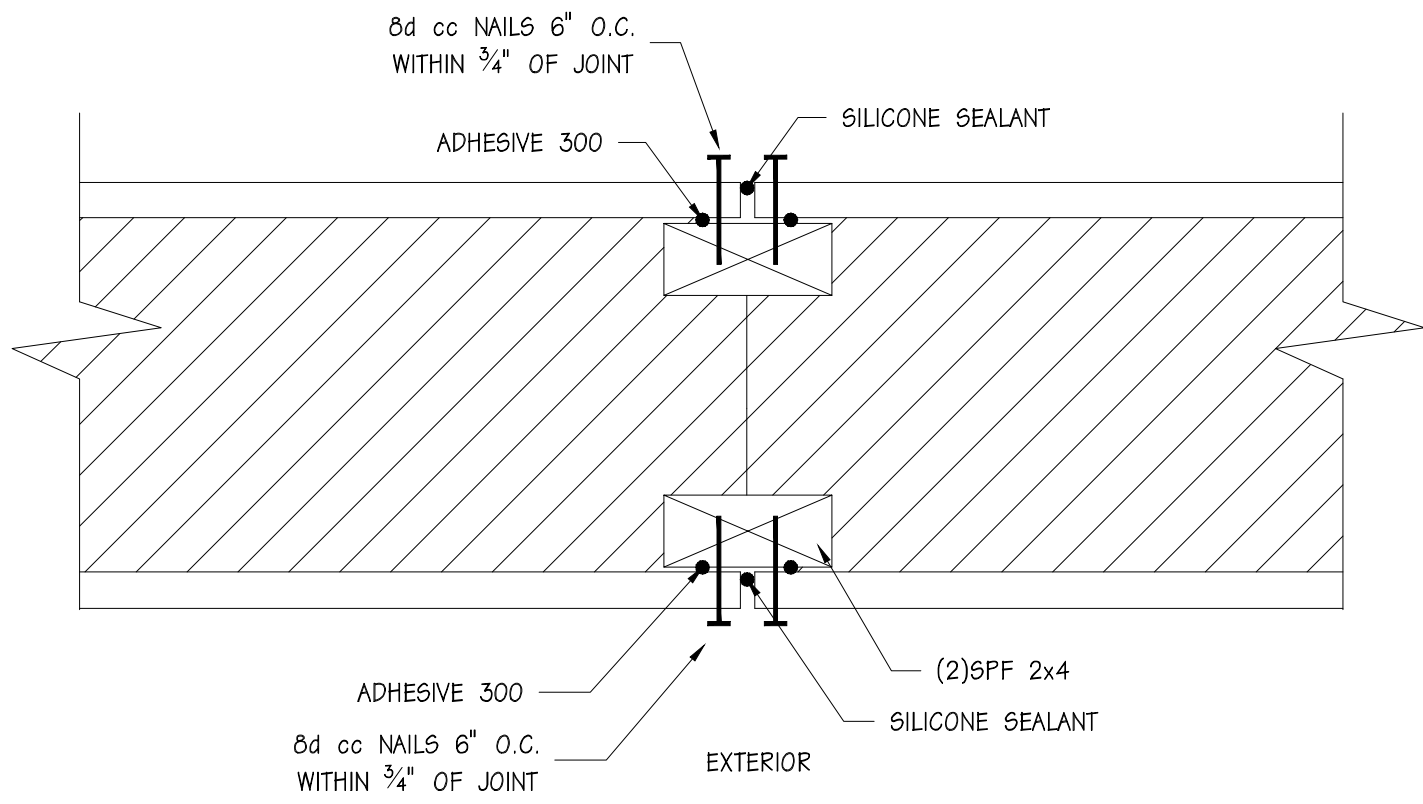
QUAIL CONSTRUCTION

TIM STRAUB
60'-0"x80'-0"x19'-11"
SOLID CORE BUILDING PACKAGE

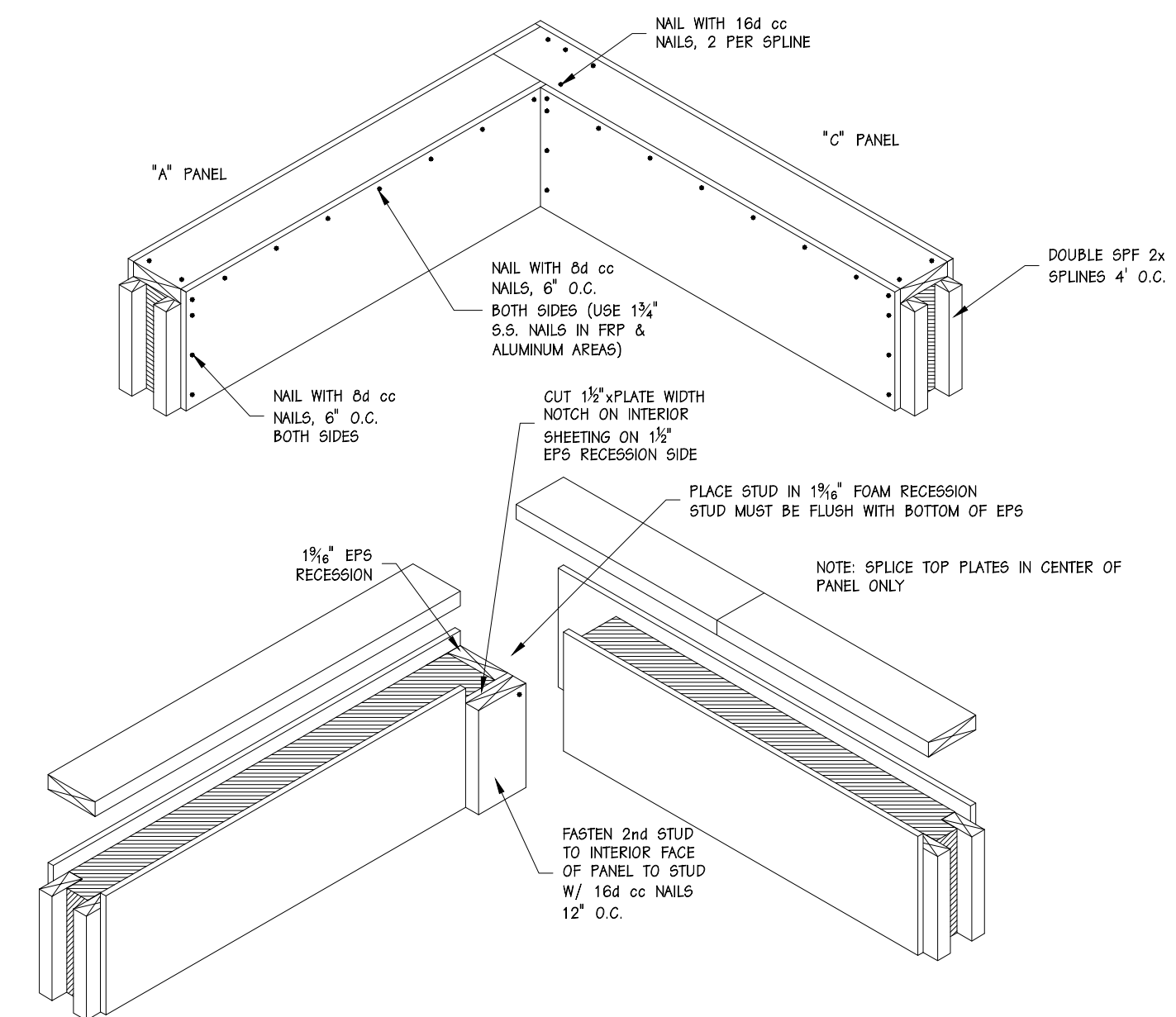
SCALE: NOTED	DATE: 4/26/11	REV: 6/1/11	SHEET: S6
DRAWN BY: DMH	REVIEWED BY: RGM	REV: 6/17/11	
DWG NO: 2011/WS/74663	REV: 0		



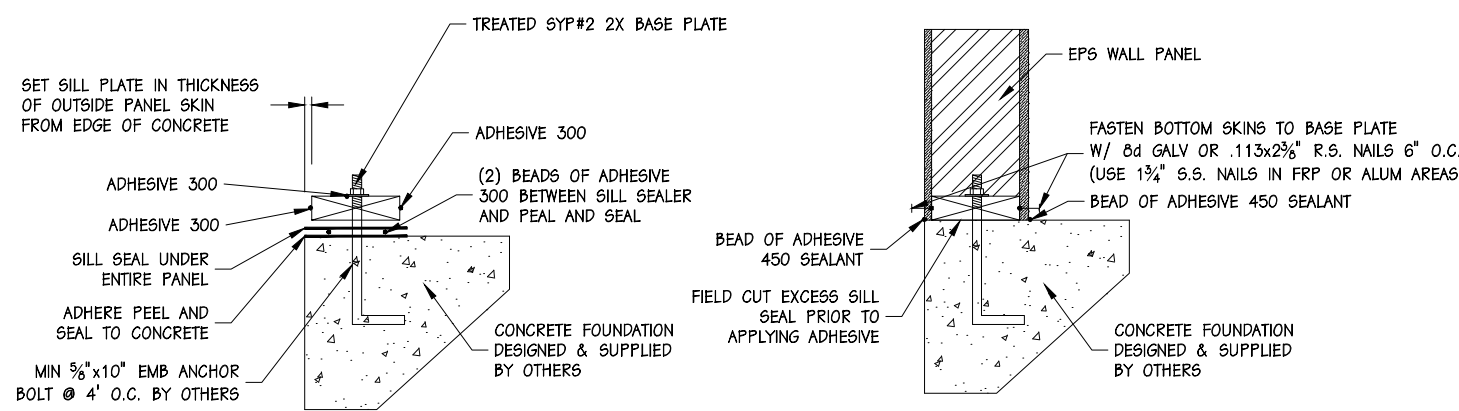
SCALE: NOTED	DATE: 4/26/11	REV. 6/1/11	SHEET: S7
DRAWN BY: DMM	REVIEWED BY: RGW	REV. 6/17/11	
DWG NO. 2011/WS/74663		REV. 0	



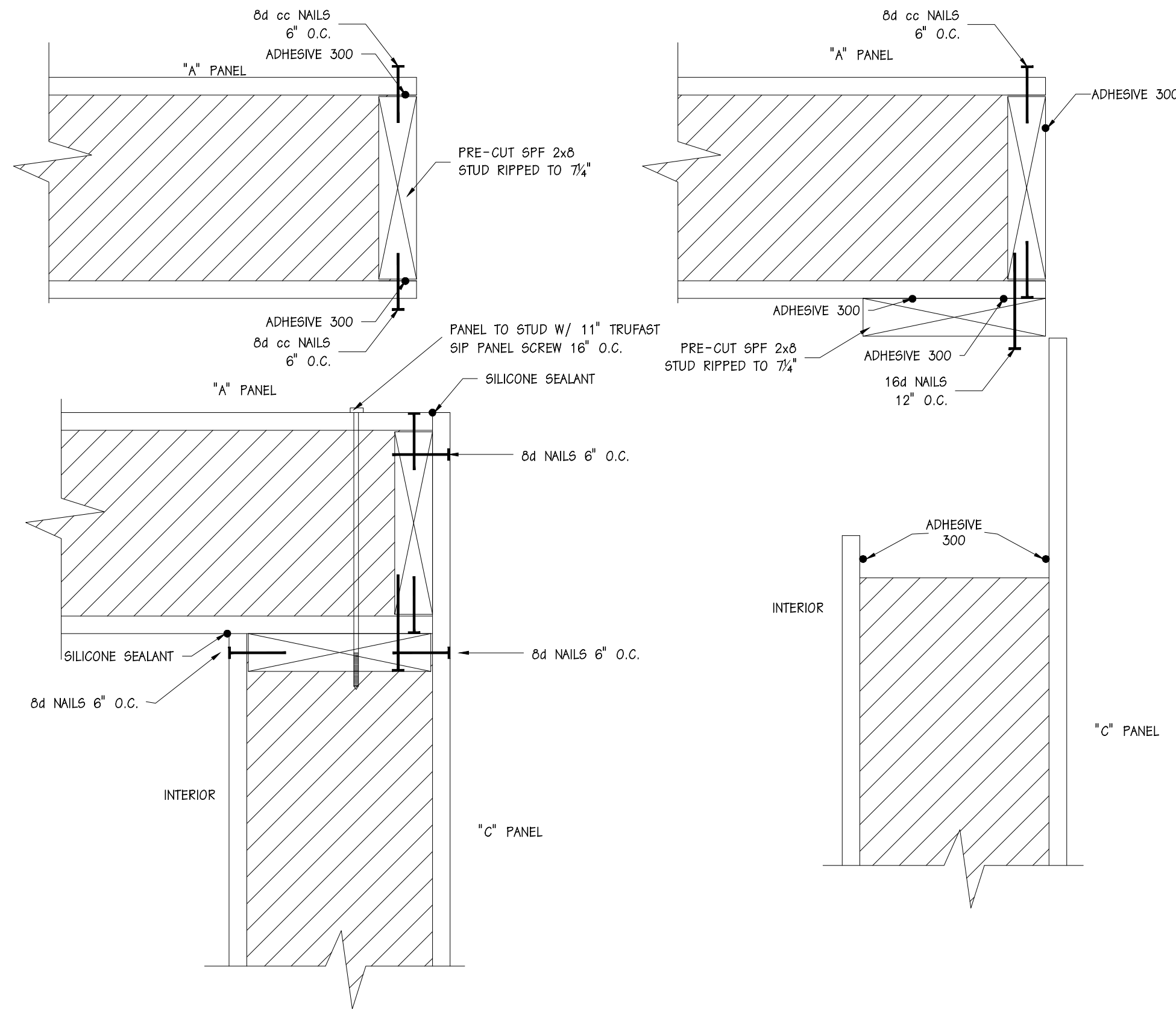
1 - PANEL/PANEL CONNECTION



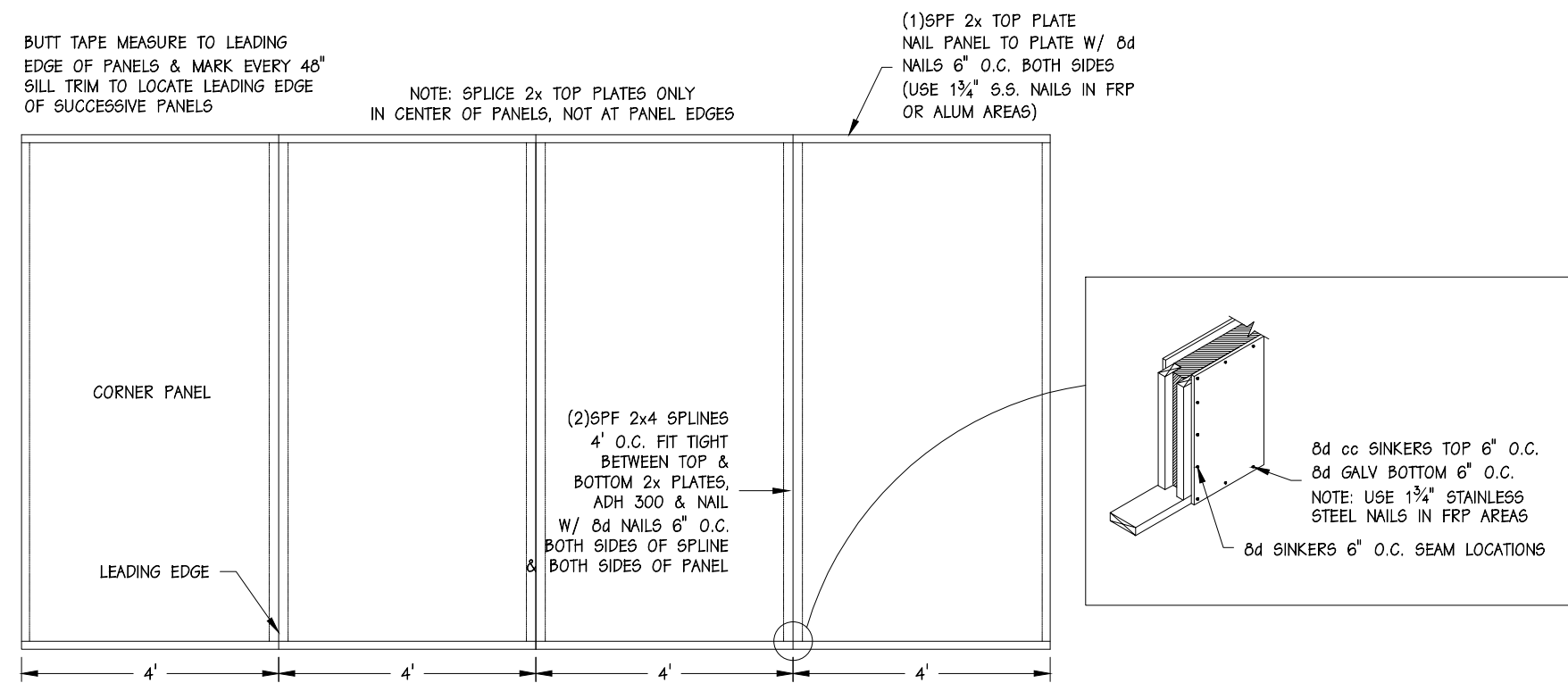
3 - CORNER/TOP PLATE CONNECTION



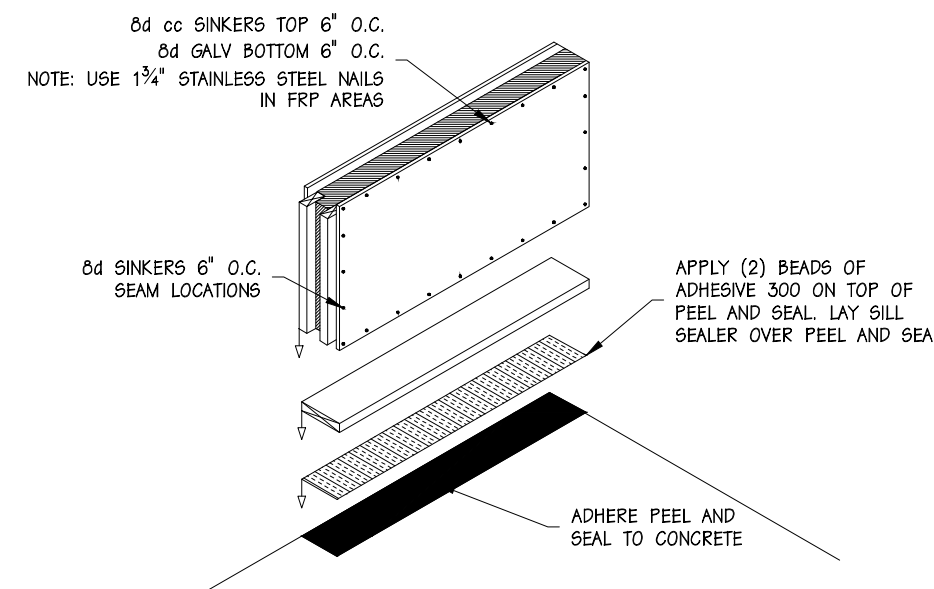
4 - BASE DETAIL



2 - PANEL CORNER CONNECTION

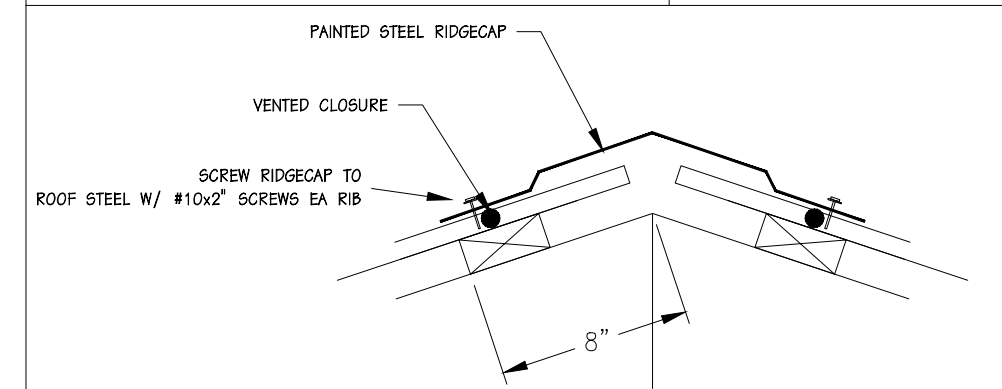


5 - PANEL CONNECTIONS




6 - BASE SILL DETAIL

SOLID CORE BUILDING FASTENING SCHEDULE		
COMPONENT	TYPE OF FASTENER	FREQUENCY
SILL PLATE/FOUNDATION	MIN. 5/8" x 5" ANCHOR BOLTS SILL SEAL	48" O.C. (by others) CONTINUOUS
TOP PLATE/STUDS	16d cc SINKERS	2' STUD
PANELS/SILL PLATE	ADHESIVE 300 ALL SKINS 8d GALV (1 3/4" S.S. IN FRP OR ALUM SKINS)	1 RUN/SKIN 6" O.C., INT & EXT. PANEL CORNERS, INT & EXT.
PANELS/STUDS	8d cc SINKERS ADHESIVE 300 ALL SKINS	6" O.C., INT & EXT. 1 RUN/SKIN
PANELS/TOP PLATE	ADHESIVE 300 ALL SKINS 8d cc SINKERS (1 3/4" S.S. IN FRP OR ALUM SKINS)	1 RUN/SKIN 6" O.C., INT & EXT. PANEL CORNERS, INT & EXT.
ENDWALL PLATE/TOP PLATE	16d cc SINKERS	6" O.C.
GABLE END TRUSS/ENDWALL PLATE	16d cc SINKERS	4" O.C.
REGULAR TRUSS/TOP PLATE	SEE EAVE DETAIL	SEE EAVE DETAIL
ROOF PURLIN/TRUSSES	16d R.S.	2 PER CONNECTION
FASCIA BOARD/TRUSSES	16d cc SINKERS	2 PER TRUSS
SOFFIT BOARD/TRUSSES & BLOCK	8d cc SINKERS	2 PER TRUSS
POST TRIM/FASCIA BOARD	#10x1-1/2" ROOF SCREWS PAINTED	18" O.C.
ANGLE TRIM/BOTTOM PURLIN	8d cc SINKERS	18" O.C.
ROOF STEEL/ROOF PURLINS	#10x1-1/2" ROOF SCREWS PAINTED	(1) 18" FLAT BESIDE RIB IN FLAT INTERMEDIATE (1) 24" FLAT BESIDE RIB IN FLAT RIDGE & EAVE
ROOF STEEL SIDE SEAMS	#12x5/8" ROOF SCREWS PAINTED	SEE CROSS SECTION
DOUBLE ANGLE/GABLE TRUSS	8d cc SINKERS	18" O.C.
PLYWOOD/GABLE END TRUSS	8d cc SINKERS	4" O.C. ALL MEMBERS
GABLE END STEEL/GABLE TRUSS	#10x1-1/2" ROOF SCREWS PAINTED	24" FLAT
RAKE TRIM/GABLE TRUSS	#10x1-1/2" ROOF SCREWS PAINTED	24" O.C.
RAKE TRIM/ROOF PURLIN	#10x1-1/2" ROOF SCREWS PAINTED	24" O.C.
OUTSIDE CORNER TRIM/PANELS	#10x1-1/2" ROOF SCREWS PAINTED	24" O.C.
RIDGE CAP/TOP PURLIN	#10x1-1/2" ROOF SCREWS PAINTED	9" O.C.
EXTERIOR PANEL JOINTS	SILICONE SEALANT	TUBE/32 #
EXTERIOR BATTEN/PANEL	1-3/4" STAINLESS STEEL NAILS	HOLES PROVIDED
INSULATION STOP/TRUSSES	1-1/2" ROOFING NAIL	9 PER STOP
CEILING NAILERS/TRUSSES	16d cc SINKERS	2 ea END
PLYWOOD-OSB/TRUSS & NAIL w/BATTEN	8d cc SINKERS	6" O.C. PERMETER & 12" O.C. INTER
GLAS-PANEL/TRUSS & NAIL w/BATTEN	8d cc SINKERS & 1-3/4" STAINLESS NAILS	6" O.C. PERMETER & 12" O.C. INTER
STEEL CEILING/TRUSSES	#9x1" ROOF SCREWS PTD WHITE	9" O.C. EA FLAT
DIVIDE STUDS/PLATES	16d cc SINKER TOE-NAIL	2 TOP & BOTTOM
GLAS-PANEL/STUDS & PLATES	8d cc SINKERS & 1-3/4" STAINLESS NAIL	6" O.C. PERMETER & 12" O.C. INTER
INTERIOR PANEL JOINTS	SILICONE SEALANT	TUBE/32 #
ALUMINUM BATTEN/PANEL JOINTS	1-3/4" STAINLESS NAIL	HOLES PROVIDED 6" O.C. CONTACT AREAS
VENTED SOFFIT PANEL TO TRUSSES AND FASCIA BLOCK	#10x1-1/2" ROOF SCREW	12" O.C.-2 RUNS
*J METAL TRIM	8d cc SINKERS	24" O.C.



7 - RIDGECAP INSTALLATION



ENERGY PANEL STRUCTURES
102 EAST INDUSTRIAL PARK
GRANTTOWN, IA 51542
PHONE: 712/859-3219
FAX: 712/859-3275
WWW.EPSBUILDINGS.COM

QUAIL CONSTRUCTION

TIM STRAUB
60'-0"x80'-0"x19'-11"
SOLID CORE BUILDING PACKAGE

SCALE: NOTED	DATE: 4/26/11	REV: 6/1/11	SHEET: C1
DRAWN BY: DMH	REVIEWED BY: RGM	REV: 6/17/11	
DWG NO: 2011/WS/74663		REV: 0	

<div><div><div></div><div></div></div></div>		
<div><div>ROOF/CEILING STEEL LAP</div><div>ROOF/CEILING SCREW INSTALLATION</div><div><div><div>USE FOR RIDGECAP: - #10x2" PAINTED ROOF SCREWS W/ NEOPRENE WASHERS</div><div></div><div>TYPICAL AT RIDGECAP</div></div><div><div><div>ALL OTHERS USE: - #10x1 1/2" PAINTED ROOF SCREWS W/ NEOPRENE WASHERS</div><div></div><div>TYPICAL AT INTERMEDIATE PURLINS</div></div><div><div><div>ALL OTHERS USE: - #10x1 1/2" PAINTED ROOF SCREWS W/ NEOPRENE WASHERS</div><div></div><div>TYPICAL AT EAVE & RIDGE</div></div></div></div></div></div>	<div>5 - GABLE END SHEATHING FASTENING</div> <div></div>	<div>10 - PERIMETER INSULATION DETAILS</div> <div></div>
<div>1 - ROOFSTEEL FASTENING</div> <div><div><div></div><div><div>NOTE: USE C METAL TRIM ON ALL ENDWALLS AND PARTITION WALLS UNLESS OTHERWISE NOTED</div><div>POLYFILM ROLL; 20'-4" WIDE,</div><div>USE #9X1" WHITE HEAD ROOF SCREWS W/ NEOPRENE WASHERS</div></div></div><div>2 - CEILING STEEL FASTENING</div></div>	<div>6 - EAVE TRIM DETAIL</div> <div></div>	
<div>3 - 4' O.C. ROOF TRUSSES PURLIN CONNECTION</div> <div></div>	<div>8 - ATTIC ACCESS FRAMING</div> <div></div>	
		<div>13 - DRAFTSTOP DETAIL</div> <div></div> <div><div><div></div><div>ENERGY PANEL STRUCTURES 102 EAST INDUSTRIAL PARK GRAFTONVILLE, IA 51542 PHONE: 712/859-3219 FAX: 712/859-3275 WWW.EPSBUILDINGS.COM</div></div><div><div>QUAIL CONSTRUCTION</div><div>TIM STRAUB 60'-0"x80'-0"x19'-11" SOLID CORE BUILDING PACKAGE</div><div><div>SCALE: NOTED DRAWN BY: DMH DATE: 4/26/11 REVISED BY: RGM DWG NO. 2011/W5/74663</div><div>DATE: 4/26/11 REV. 6/1/11 REV. 6/17/11 REV. 0</div><div>SHEET: C2</div></div></div></div>