

CONSTRUCTION NOTES:

PANEL INSTALLATION:

- 1) PLACE REQUIRED 6 MIL VAPOR BARRIER AND SIP SEAM TAPE (OPTIONAL) DRAPED OVER BEAM PRIOR TO SETTING ROOF PANELS.
- 2) PERIODICALLY MEASURE ROOF PANEL PROGRESS FOR GROWTH DURING INSTALLATION.
- 3) SECURE ROOF PANELS TO WALLS AND /OR ROOF BEAMS USING PROVIDED SIP SCREWS. SEE CONSTRUCTION GUIDE FOR PROPER SCREW SPACING.
- 4) NAIL ALL PANEL JOINTS USING 8D NAILS ON 6" CENTERS ON BOTH THE INTERIOR AND EXTERIOR SURFACES.
- 5) REFER TO THE ENERCEPT CONSTRUCTION GUIDE FOR COMPLETE DETAILS.

PLEASE CALL BEFORE YOU CUT 1-800-658-3303.

ELECTRICAL:

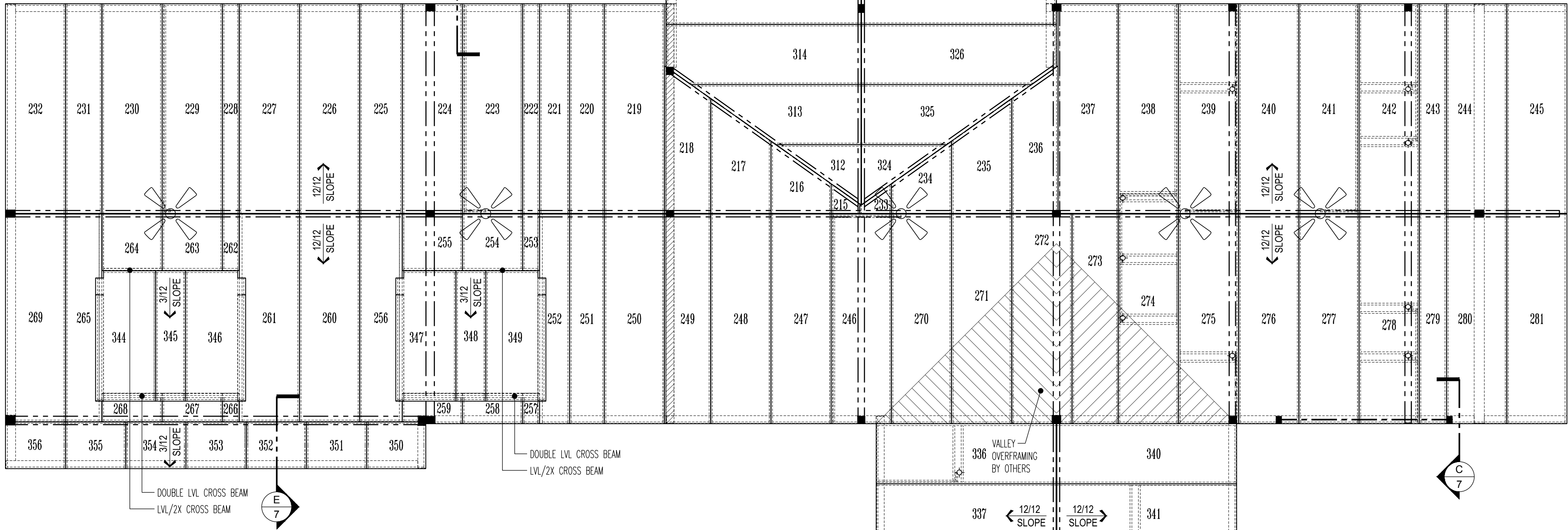
- 1) INDICATE ON THE APPROVAL DRAWINGS (RETURNED TO ENERCEPT) ANY LOCATIONS THAT WILL REQUIRE ELECTRICAL WIRE TO BE INSTALLED IN THE ROOF PANELS. ALSO NOTE ANY SPECIAL FIXTURE LOCATIONS, SUCH AS CEILING FANS OR CHANDELIERS. ELECTRICAL WIRE TO BE 12-3 WITH GROUND NMB WIRE.

PANEL DESCRIPTION:

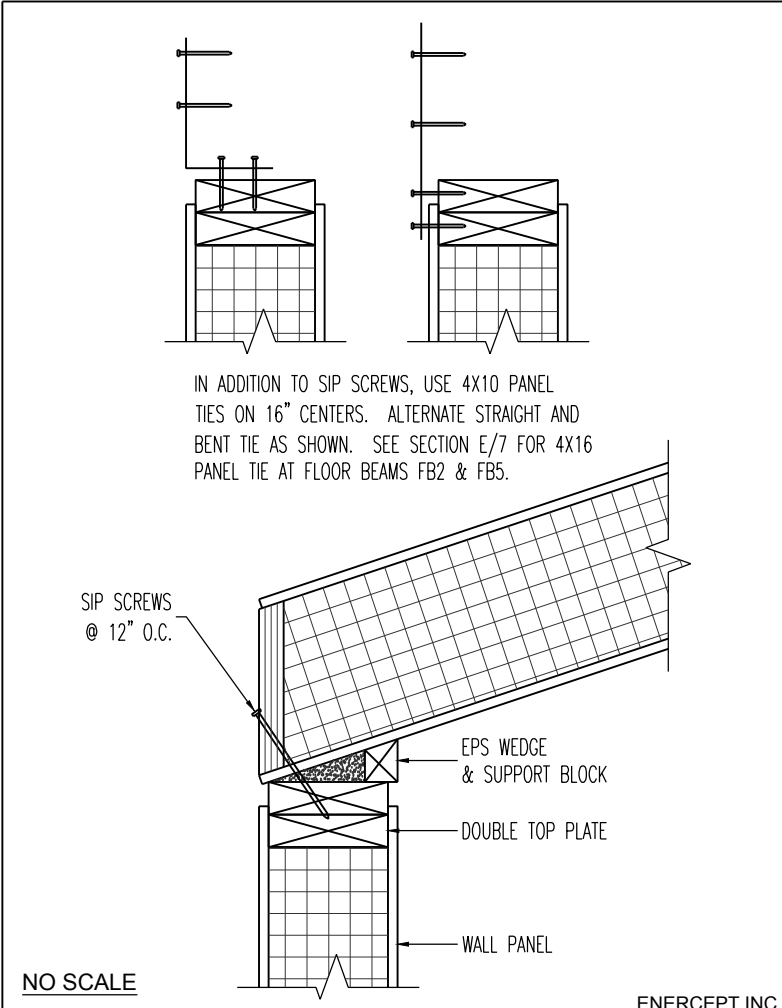
ENERCEPT STRUCTURAL ROOF PANELS CONSTRUCTED WITH A 9 1/2" EPS CORE, 7/16" OSB INTERIOR AND EXTERIOR SHEATHING, AND A 9 1/2" WOODEN I-JOIST AT THE EDGE OF EACH PANEL.
ROOF PANEL THICKNESS = 10 3/8"

ROOF PANEL FASTENER SCHEDULE:

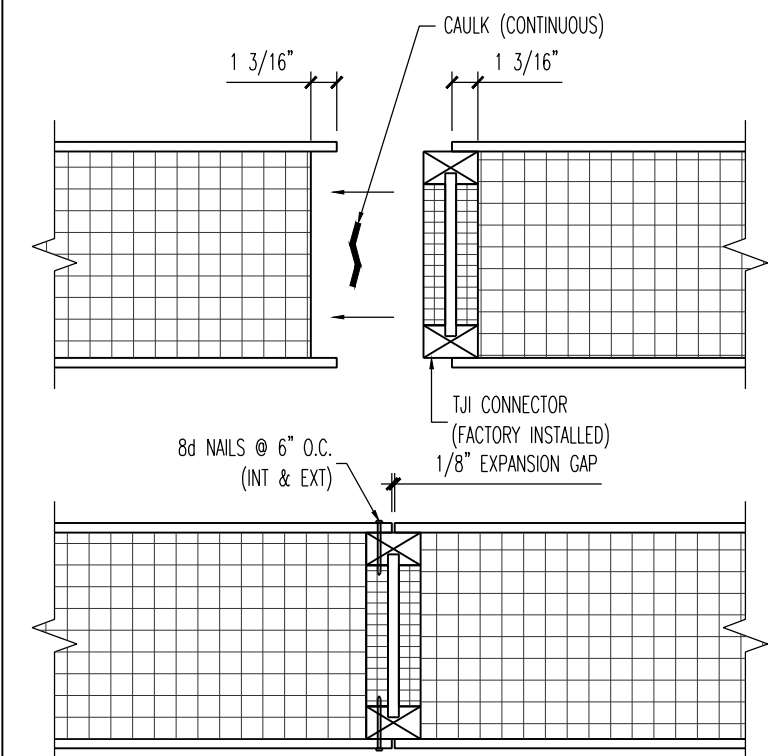
- 1) FASTEN ROOF PANELS TO RIDGE BEAMS W/ 13-INCH SIP FASTENERS ON 12" CENTERS
- 2) FASTEN ROOF PANELS TO GABLE END TOP PLATES W/ 13-INCH SIP FASTENERS ON 16" CENTERS
- 3) FASTEN ROOF PANELS TO EAVE TOP PLATES W/ 6-INCH SIP FASTENERS 10E-SCREWED THROUGH FACEPLATES. IN ADDITION TO SIP FASTENERS, USE 4X10 PANEL TIES ON 16" CENTERS. SEE WALL/ROOF CONNECTION DETAIL ON THIS SHEET. SEE SECTION E/7 FOR ROOF PANEL CONNECTION DETAIL AT FB2 & FB5.
- 4) FASTEN 8.5:12 ROOF PANELS TO VALLEY BEAMS W/ 13-INCH SIP FASTENERS ON 12" CENTERS
- 5) FASTEN 12:12 ROOF PANELS TO VALLEY BEAMS W/ 15-INCH SIP FASTENERS ON 12" CENTERS



ROOF PANEL LAYOUT
SCALE: 3/16" = 1'-0"



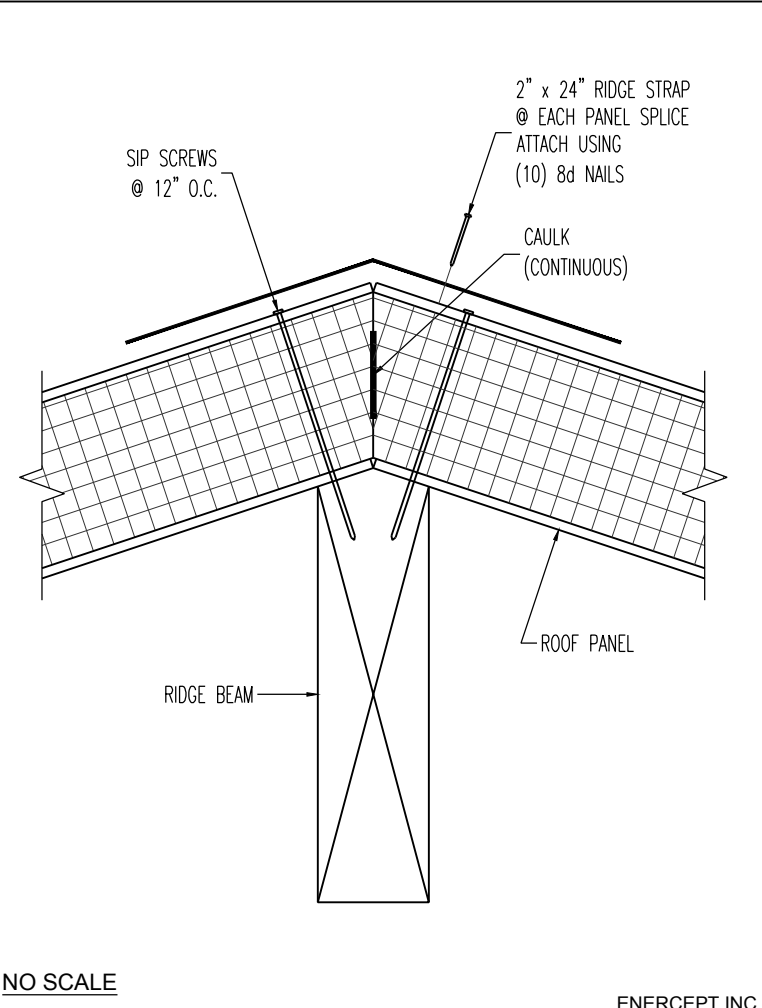
WALL / ROOF CONNECTION DETAIL



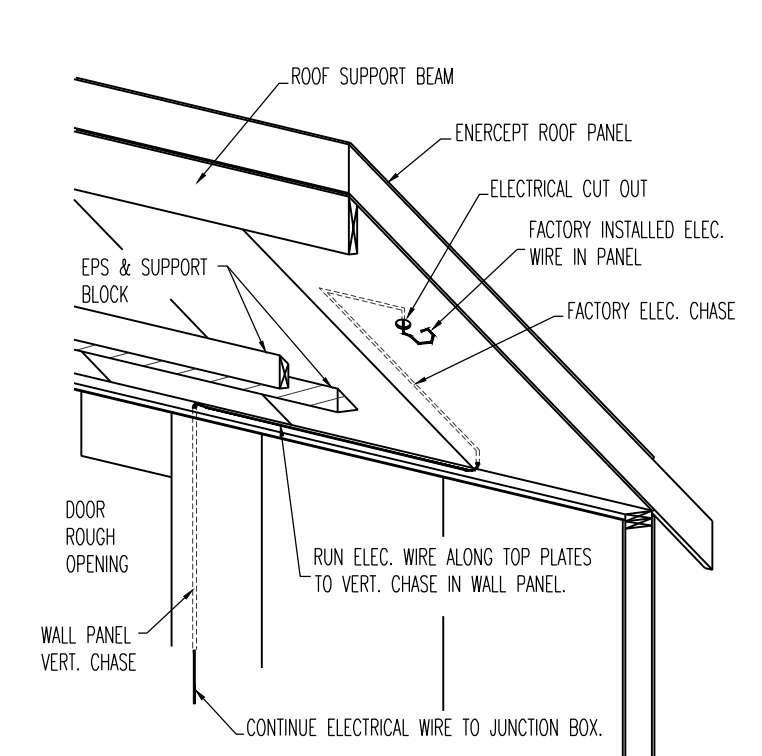
INSTALLATION NOTE:
1) A COME-A-LONG OR OTHER MECHANICAL MEANS MAY BE REQUIRED TO PULL PANELS TOGETHER.
2) TOPS OF PANELS MUST BE LEVEL & ALIGNED BEFORE NAILING.

NO SCALE ENERCEPT INC.

ROOF PANEL CONNECTION DETAIL



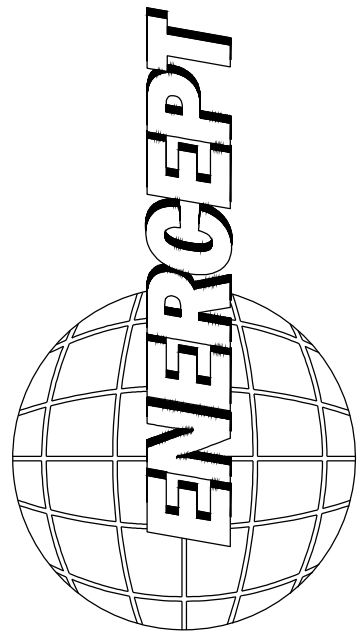
ROOF / BEAM CONNECTION DETAIL



NOTE:
1) SUPPORT BLOCKING WILL BE PROVIDED IN ROOF PANELS FOR ALL FAN AND CHANDELER LOCATIONS.
2) PRE-DRILL THE ELECTRICAL CHASES IN THE TOP PLATES BEFORE INSTALLING THE ROOF PANELS.

NO SCALE ENERCEPT INC.

ELECTRICAL IN ENERCEPT ROOF PANELS



ENERCEPT, INC.

3100 9th AVE SE
WATERTOWN, SD 57201
PHONE: (605) 882-2222
FAX: (605) 882-2753
(800) 658-3303
www.enercept.com

REVISIONS:

- REVISION A
07-01-2015: REVISED TO MATCH NEW FOUNDATION DIMENSIONS. (WMM)
- REVISION B
07-02-2015: REVISED CROSS SECTIONS. (WMM)
- REVISION C
07-16-2015: REVISED PER REDLINES RECEIVED ON 07-13-2015. (WMM)
- REVISION D
07-22-2015: ADDED ELECTRICAL LOCATIONS. (WMM)
- REVISION E
08-10-2015: FINAL LAYOUTS (WMM)
- REVISION F
08-14-2015: WALL HT. CHANGE AT B/7. (WMM)

ENERCEPT PANELS FOR ESTVOLD

BUILDER INFORMATION:

SEND DRAWINGS TO:

ROOF PANEL LAYOUT

SCALE:

AS NOTED

DRAWN BY:

WMM

DATE:

06-02-2015

PROJECT NUMBER:

8090-66969

SHEET:

4 OF 7