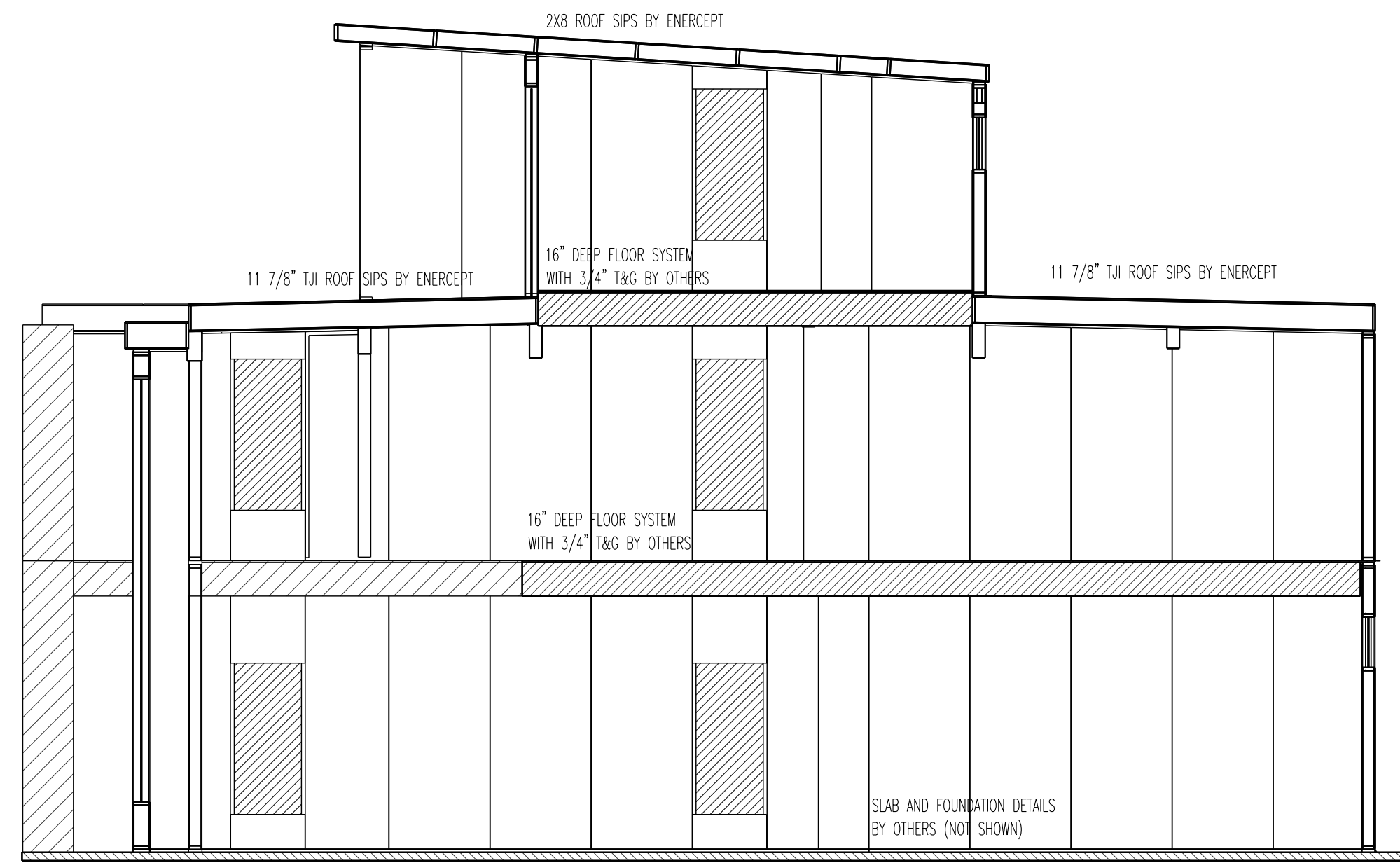
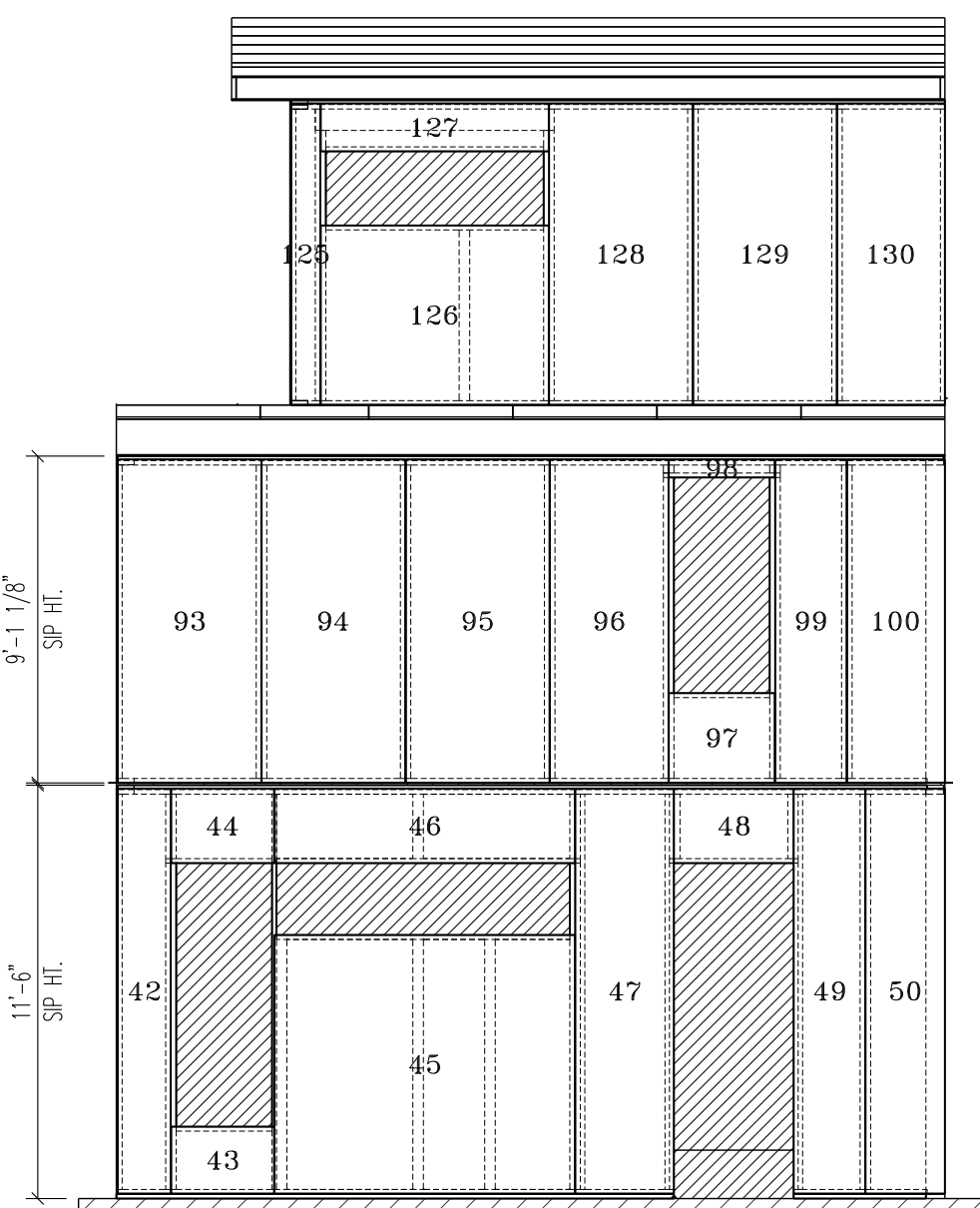
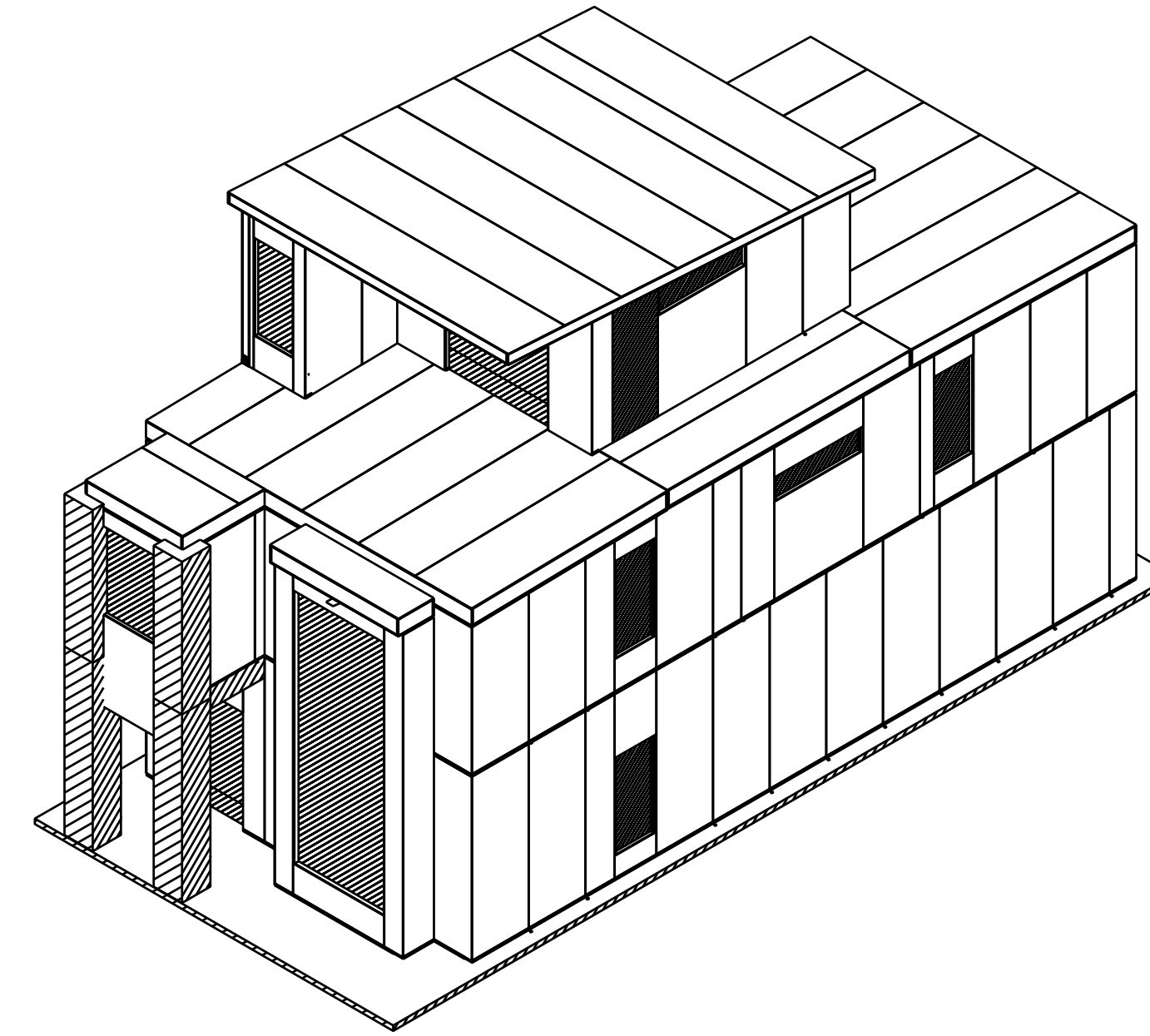


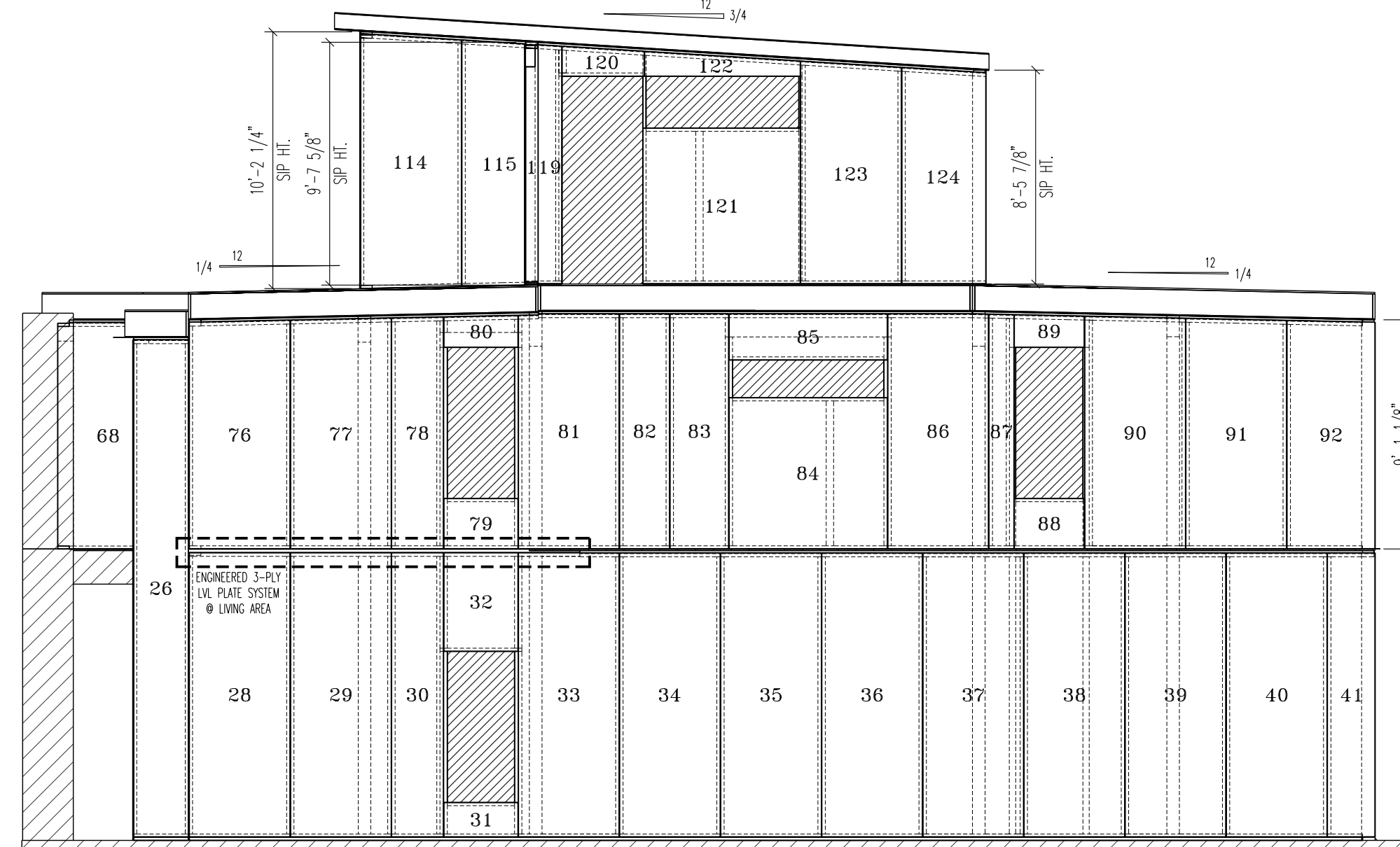
E TRANSVERSE SECTION
SCALE: 3/16" = 1'-0"



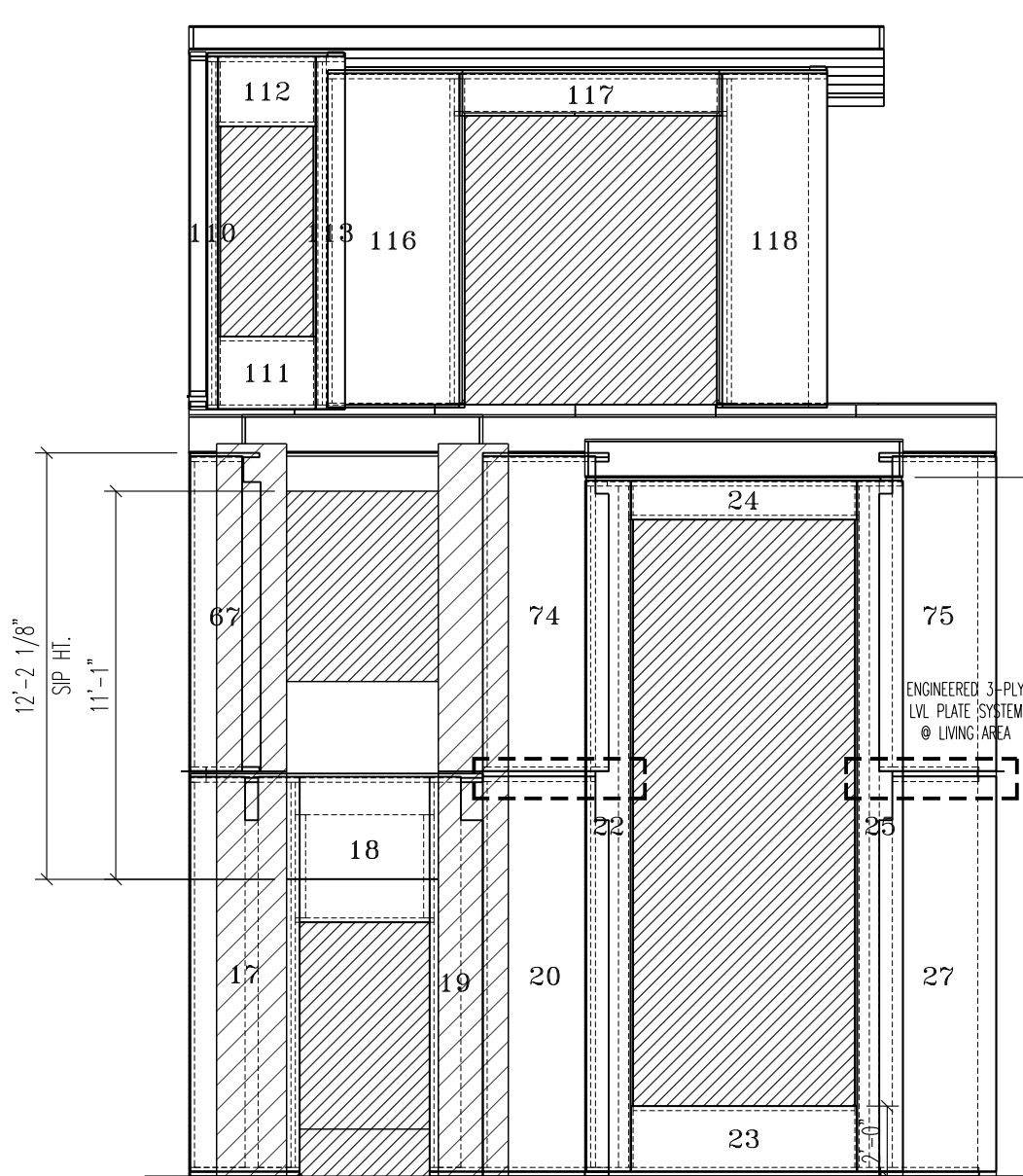
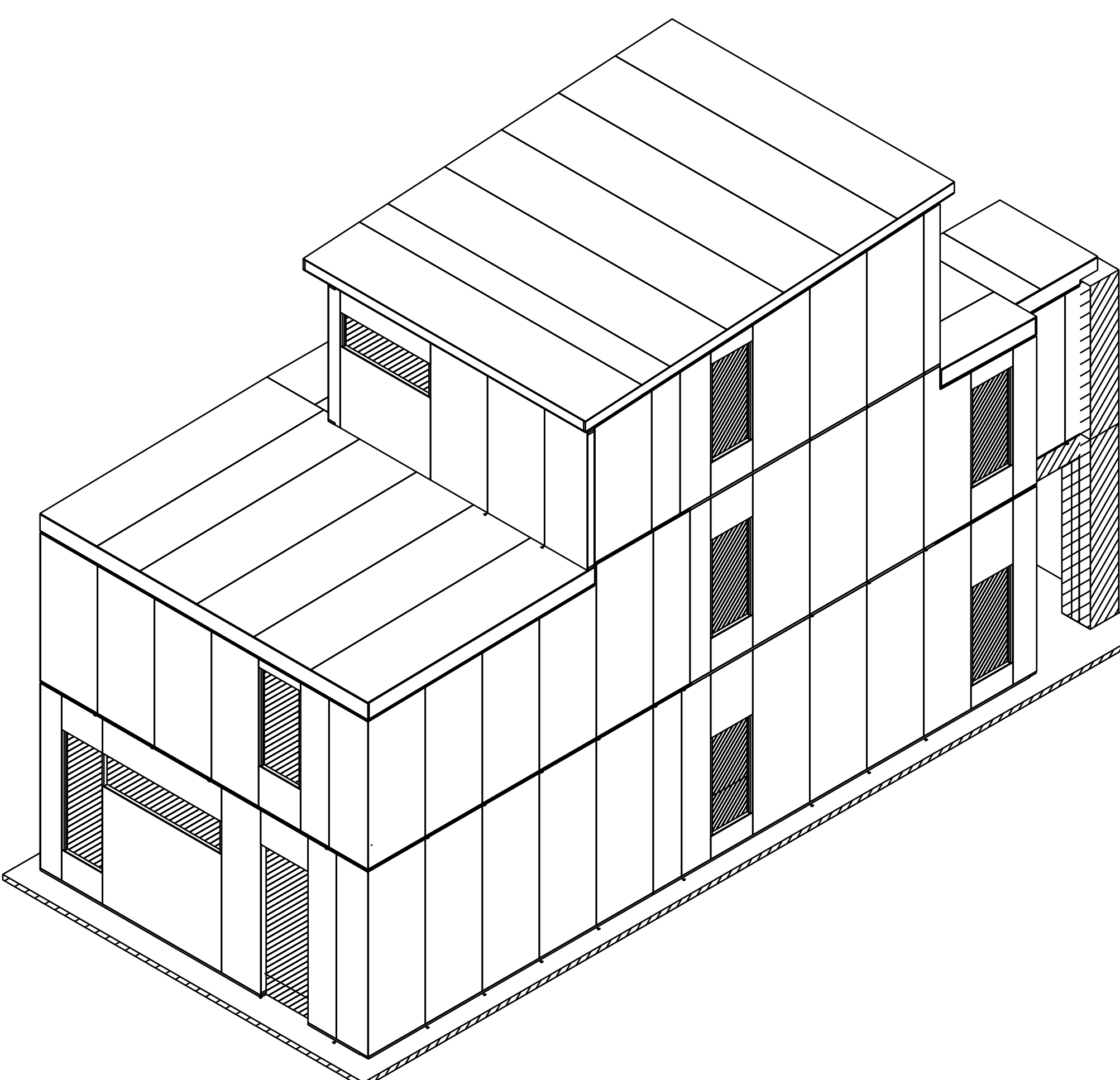
F LONGITUDINAL SECTION
SCALE: 3/16" = 1'-0"



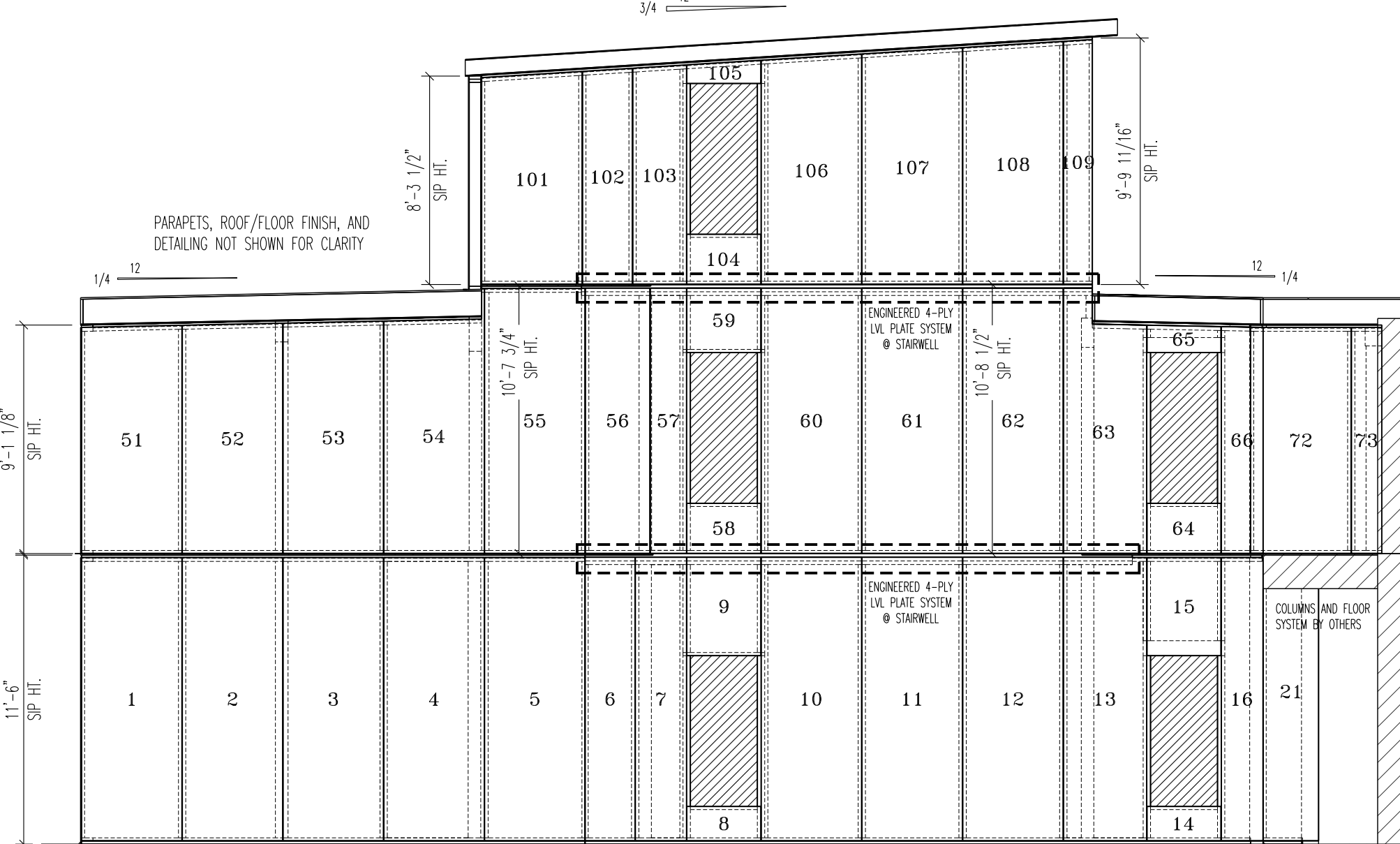
C WEST ELEVATION
SCALE: 3/16" = 1'-0"



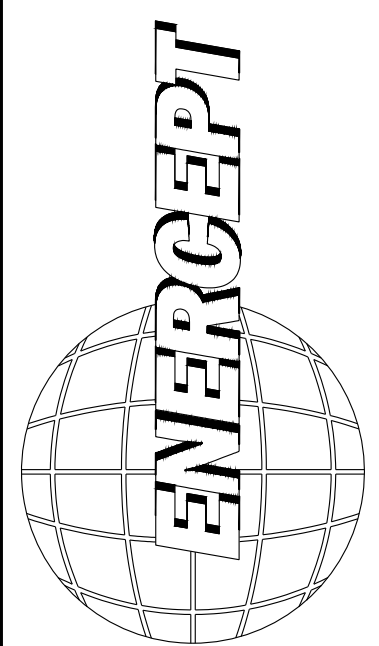
D NORTH ELEVATION
SCALE: 3/16" = 1'-0"



A EAST ELEVATION
SCALE: 3/16" = 1'-0"



B SOUTH ELEVATION
SCALE: 3/16" = 1'-0"



ENERCEPT, INC.
3100 9th AVE. SE
WATERTOWN, SD 57201
PHONE: (605) 882-2222
FAX: (605) 882-2753
(800) 658-3303
www.enercept.com

REVISIONS:
REVISION A
02-22-2016: ADDED/ADJUSTED LVL BEAM SIZES AND LAYOUT AT UPPER LEVEL. (BLM)
REVISION B
03-17-2016: REVISED DRAWINGS TO REFLECT STAND-ALONE STRUCTURE. ADDED 5 WINDOWS AND CHANGED SOME DOOR/WINDOW R.O.S. AND LOCATIONS. ADJUSTED SIP PERIMETER. (BLM)
REVISION C
03-22-2016: REVISED DRAWINGS TO DECREASE BUILDING FOOTPRINT BY 12" TO 24" OVERALL. (BLM)
REVISION D
04-07-2016: ADDED 7 ELECTRICAL LOCATIONS IN 2XB ROOF PANELS PER TONY. (BLM)

CHAPMAN TOWNHOME
SEAL DRAWINGS TO:
DAVE & JULIE CHAPMAN
375 N BROADWAY
EDMOND, OK
BUILDER INFORMATION:
ELEVATIONS & 3-D VIEWS

SCALE:
AS NOTED
DRAWN BY:
BLM
DATE:
04-15-2016
PROJECT NUMBER:
68023
SHEET:
5 OF 5